

RNAV (RNP) Z RWY 26L

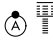
ONTARIO INTL (ONT)

| | | |
|-------------|----------|--------------|
| APP CRS | Rwy Idg | 10200 |
| 258° | TDZE | 926 |
| | Apt Elev | 944 |

RNP AR APCH.

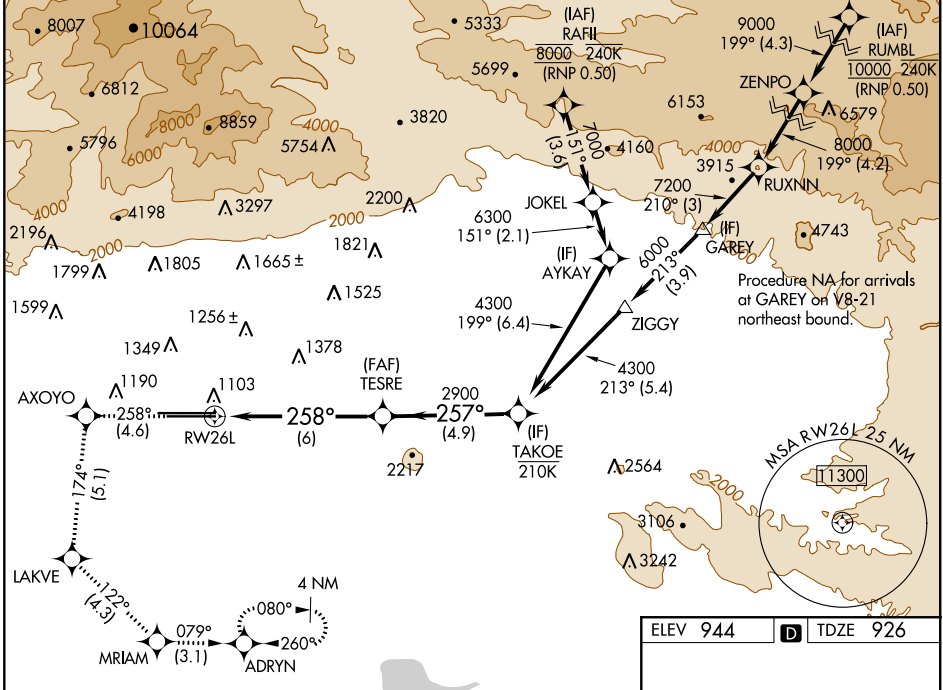
▼ For uncompensated Baro-VNAV systems, procedure NA below 1°C or above 54°C. For inop ALS, increase RNP 0.15 visibility all Cats to RVR 4500, RNP 0.18 visibility all Cats to RVR 5500, RNP 0.30 visibility all Cats to RVR 6000.

ALSF-2



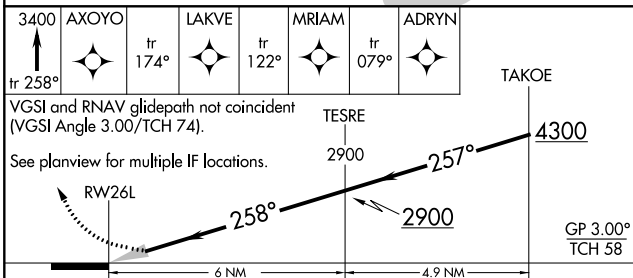
MISSED APPROACH: Climb to 3400 on track 258° to AXOYO and track 174° to LAKVE and track 122° to MRIAM and track 079° to ADRYN and hold.

| | | | | | |
|---------------|--------------------|----------------------|--------------------|--------------|-------|
| D-ATIS | SOCAL APP CON | ONTARIO TOWER | GND CON | CLNC DEL | CPDLC |
| 124.25 | 127.0 318.2 | 120.6 360.775 | 121.9 257.8 | 118.1 | |



SW-3, 10 SEP 2020 to 08 OCT 2020

SW-3, 10 SEP 2020 to 08 OCT 2020



| CATEGORY | A | B | C | D |
|-------------|---|---------|-------------|---|
| RNP 0.15 DA | | 1218/24 | 292 (300-½) | |
| RNP 0.18 DA | | 1274/30 | 348 (400-¾) | |
| RNP 0.30 DA | | 1340/40 | 414 (400-¾) | |

AUTHORIZATION REQUIRED

| | | |
|----------|----------|----------|
| ELEV 944 | D | TDZE 926 |
|----------|----------|----------|

TDZ/CL Rws 8L and 26L
HIRL Rws 8L-26R and 8R-26L