

WAAS CH <b>69620</b> <b>W14A</b>	APP CRS <b>139°</b>	Rwy Idg TDZE Apt Elev	<b>4401</b> <b>1319</b> <b>1324</b>
--	------------------------	-----------------------------	---

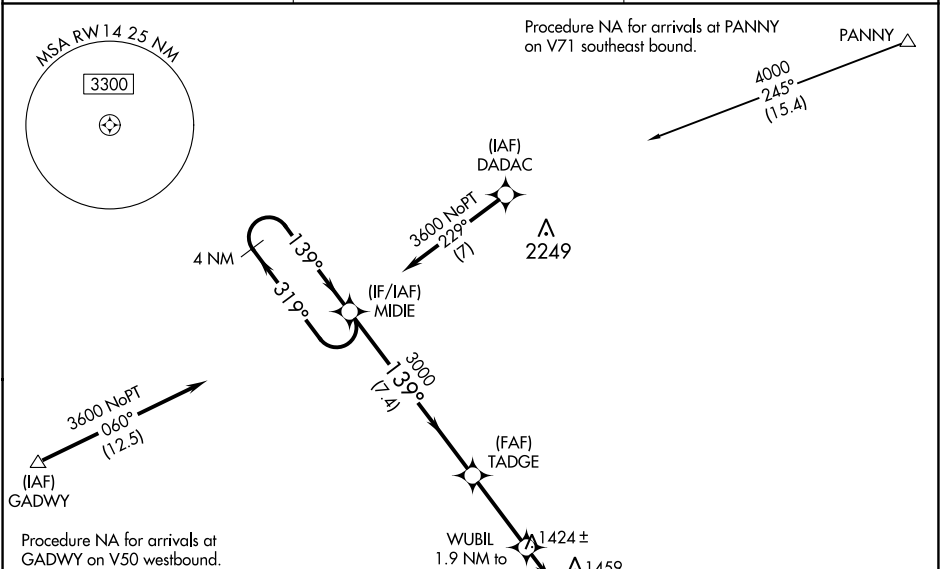
# RNAV (GPS) RWY 14

BEATRICE MUNI (BIE)

**⚠** For uncompensated Baro-VNAV systems, LNAV/VNAV NA below -17°C (2°F) or above 35°C (95°F).  
**⚠** DME/DME RNP-0.3 NA.

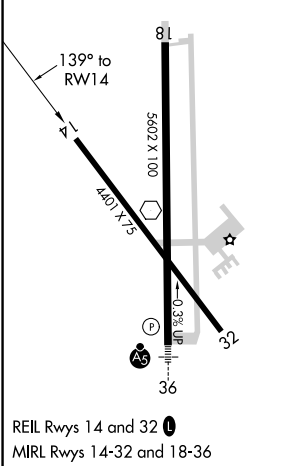
MISSED APPROACH: Climb to 3600 direct SHIRS and hold.

AWOS-3 <b>125.325</b>	MINNEAPOLIS CENTER <b>126.4 317.7</b>	UNICOM <b>122.8 (CTAF)</b> <b>0</b>
--------------------------	--	--



Procedure NA for arrivals at GADWY on V50 westbound.

ELEV 1324	<b>D</b>	TDZE 1319
-----------	----------	-----------



	4 NM Holding Pattern	MIDIE	TADGE	WUBIL 1.9 NM to RWY 14	SHIRS
	3600	319°	139°	3000	3600
	GP 3.00°			*1960	
	TCH 45			*1.2 NM to RWY 14	
		7.4 NM	3.2 NM	0.7	1.2 NM
CATEGORY	A	B	C	D	
LPV DA		1569-1	250 (300-1)		
LNAV/VNAV DA		1569-1	250 (300-1)		
LNAV MDA	1760-1	441 (500-1)	1760-1 $\frac{3}{8}$	441 (500-1 $\frac{3}{8}$ )	
<b>C</b> CIRCLING	1820-1	496 (500-1)	2000-2	2100-2 $\frac{1}{2}$	676 (700-2) 776 (800-2 $\frac{1}{2}$ )

NC-2, 10 SEP 2020 to 08 OCT 2020

NC-2, 10 SEP 2020 to 08 OCT 2020