

VIRGINIA BEACH, VIRGINIA

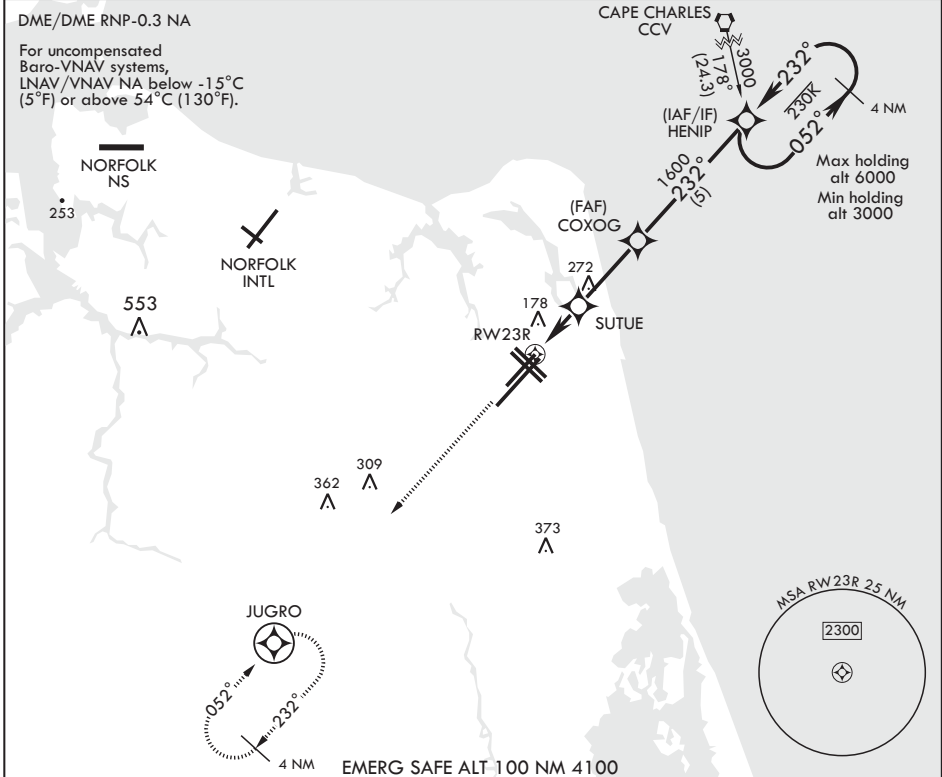
RNAV (GPS) RWY 23R

WAAS CH 71079 W23B	APCH CRS 232°	Rwy ldg TDZE Arpt Elev	8000 21 22
--------------------------	------------------	---------------------------	------------------

AL-934 (USN) OCEANA NAS (APOLLO SOUCEK FLD) (KNTU)

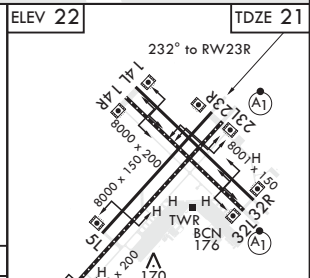
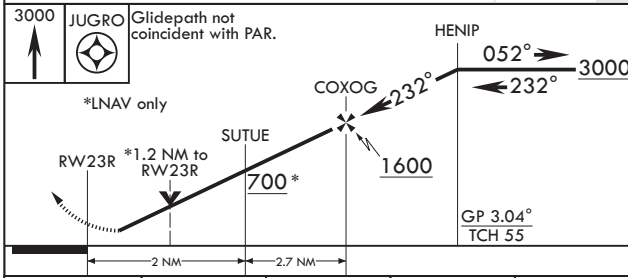
▽ MISSED APPROACH: Climb to 3000 direct JUGRO and hold. Continue climb in hold to 3000.

ATIS 317.6	OCEANA APP CON 123.9 266.8	TOWER 127.075 360.2	GND CON 119.6 336.4	CLNC DEL 254.4	ASR/PAR
---------------	-------------------------------	------------------------	------------------------	-------------------	---------



NE-3, 10 SEP 2020 to 08 OCT 2020

NE-3, 10 SEP 2020 to 08 OCT 2020



CATEGORY	A	B	C	D
LPV DA	221-3/4	200	(200-3/4)	
LNAV/VNAV DA	446-1 7/8	425	(500-1 7/8)	
LNAV MDA	460-1 439 (500-1)	460-1 1/4 439 (500-1 1/4)		
C CIRCLING	500-1 478 (500-1)	640-1 3/4 618 (700-1 3/4)	640-2 618 (700-2)	

HIRL all Rws
Wave-Off Lights all Rws

VIRGINIA BEACH, VIRGINIA

36°49'N - 76°02'W OCEANA NAS (APOLLO SOUCEK FLD) (KNTU)

Amdt 3 10OCT19

RNAV (GPS) RWY 23R