

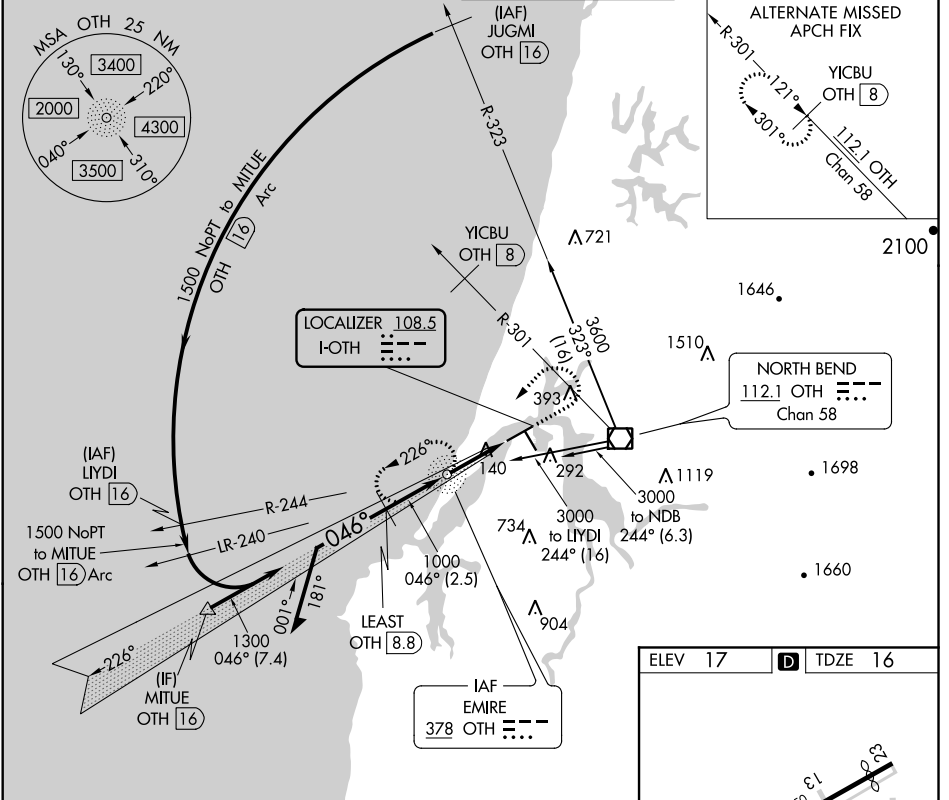
LOC I-OTH <b>108.5</b>	APP CRS <b>046°</b>	Rwy Idg <b>5320</b>
		TDZE <b>16</b>
		Apt Elev <b>17</b>

# COPTER ILS or LOC RWY 5

SOUTHWEST OREGON RGNL (OTH)

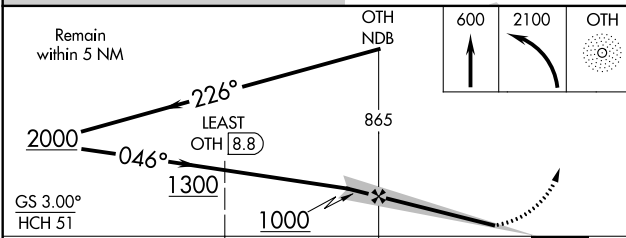
ADF and DME required.	MALSR 	MISSED APPROACH: Climb to 600 then climbing left turn to 2100 direct OTH NDB and hold, continue climb-in-hold to 2100.
-----------------------	-----------	--

AWOS-3PT <b>135.075</b>	SEATTLE CENTER <b>127.55 254.35</b>	NORTH BEND TOWER* <b>118.45 (CTAF) 0</b>	GND CON <b>127.1</b>
----------------------------	--	---	-------------------------



NW-1, 10 SEP 2020 to 08 OCT 2020

NW-1, 10 SEP 2020 to 08 OCT 2020



ELEV 17	TDZE 16
---------	---------

**HIRL Rwy 5-23**  
**MIRL Rwy 13-31**  
**REIL Rwys 13, 23 and 31**

FAF to MAP 2.5 NM

Knots	45	60	75	90	105
Min:Sec	3:20	2:30	2:00	1:40	1:26

CATEGORY	COPTER	
H-ILS 5	216-1/2	200 (200-1/2)
H-LOC 5	400-1/2	384 (400-1/2)