


WAAS CH 82530 W31A	APP CRS 311°	Rwy Idg TDZE 36 Apt Elev 36	7257
--	------------------------	---	-------------

RNAV (GPS) Y RWY 31

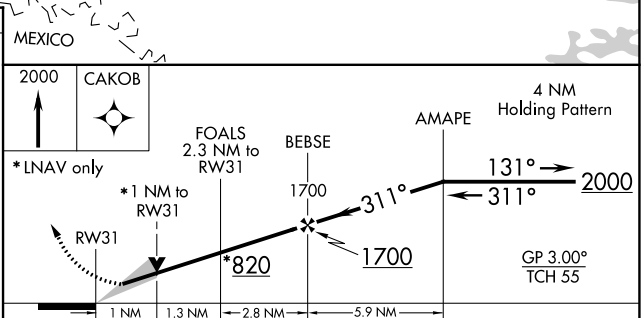
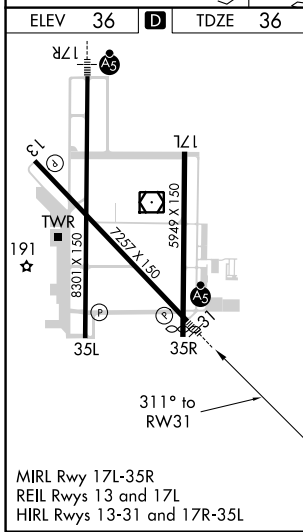
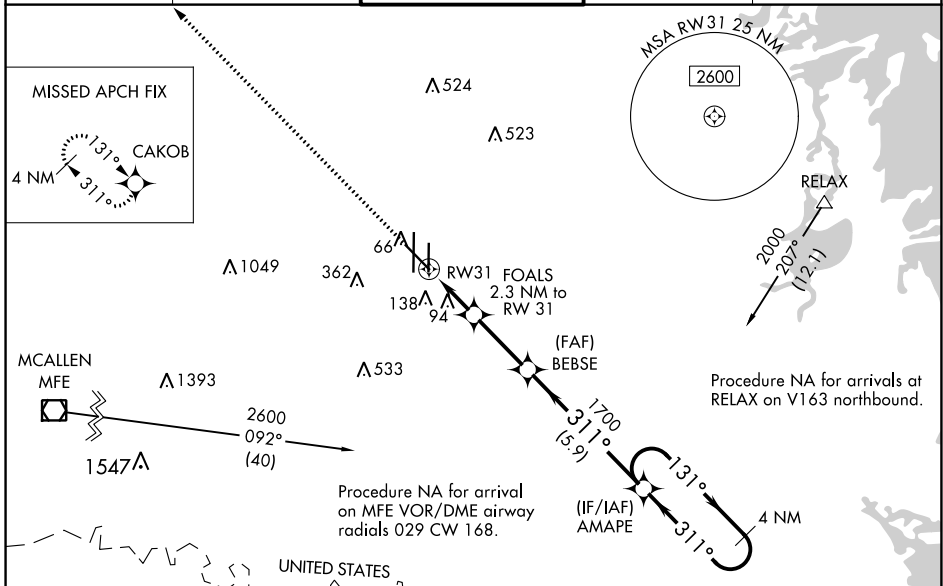
VALLEY INTL (HRL)

▼ For uncompensated Baro-VNAV systems, LNAV/VNAV NA below 2°C (36°F) or above 54°C (130°F). DME/DME RNP-0.3 NA.

MALSRL 

MISSED APPROACH: Climb to 2000 direct CAKOB and hold.

ATIS 124.85	VALLEY APP CON 120.7 279.5	HARLINGEN TOWER ★ 119.3 (CTAF) 0 317.6	GND CON 121.7	UNICOM 122.95
-----------------------	--------------------------------------	--	-------------------------	-------------------------



CATEGORY	A	B	C	D
LPV DA	236-½ 200 (200-½)			
LNAV/VNAV DA	286-½ 250 (300-½)			
LNAV MDA	420-½ 384 (400-½)	420-⅝ 384 (400-⅝)		
CIRCLING	500-1 464 (500-1)	560-1 524 (600-1)	680-1¾ 644 (700-1¾)	680-2 644 (700-2)

SC-3, 10 SEP 2020 to 08 OCT 2020

SC-3, 10 SEP 2020 to 08 OCT 2020