

RNAV (RNP) Z RWY 13

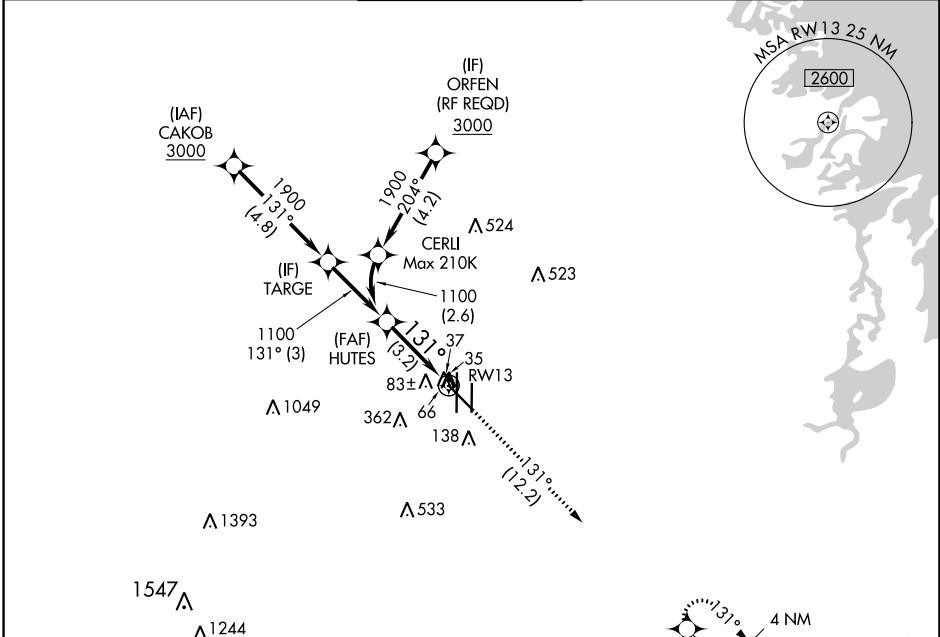
VALLEY INTL (HRL)

APP CRS 131°	Rwy Idg 7257
	TDZE 35
	Apt Elev 36

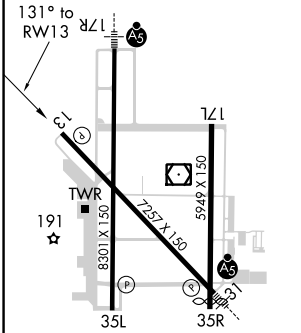
▼ For uncompensated Baro-VNAV systems, procedure NA below 2°C (36°F) or above 54°C (130°F). GPS required.

MISSED APPROACH: Climb to 2000 on track 131° to AMAPE and hold.

ATIS 124.85	VALLEY APP CON 120.7 279.5	HARLINGEN TOWER ★ 119.3 (CTAF) 317.6	GND CON 121.7	UNICOM 122.95
-----------------------	--------------------------------------	--	-------------------------	-------------------------



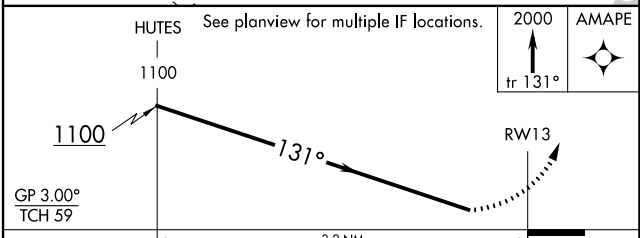
ELEV 36	D	TDZE 35
---------	----------	---------



MIRL Rwy 17L-35R
REIL Rwys 13 and 17L
HIRL Rwys 13-31 and 17R-35L

UNITED STATES
MEXICO

RADAR REQUIRED



CATEGORY	A	B	C	D
RNP 0.15 DA		302- $\frac{7}{8}$	267 (300- $\frac{7}{8}$)	
RNP 0.30 DA		393-1 $\frac{1}{8}$	358 (400-1 $\frac{1}{8}$)	

AUTHORIZATION REQUIRED

SC-3, 10 SEP 2020 to 08 OCT 2020

SC-3, 10 SEP 2020 to 08 OCT 2020