

WAAS CH 72830 W35A	APP CRS 356°	Rwy Idg TDZE Apt Elev	5759 36 36
--	------------------------	-----------------------------	---------------------------------------

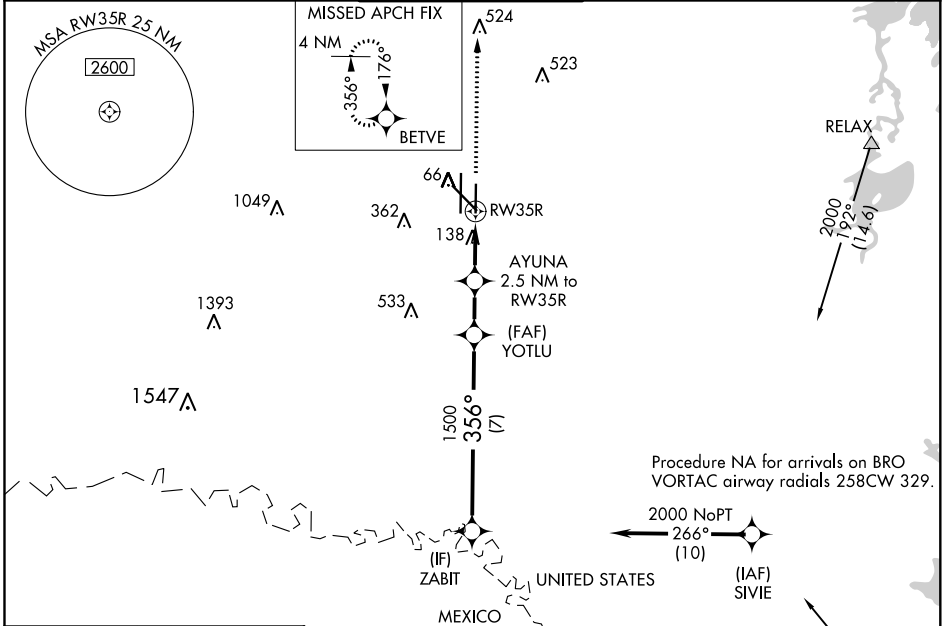
RNAV (GPS) RWY 35R

VALLEY INTL (HRL)

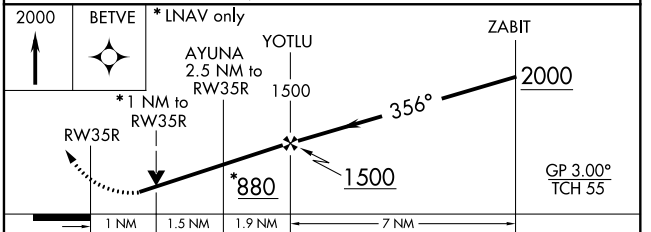
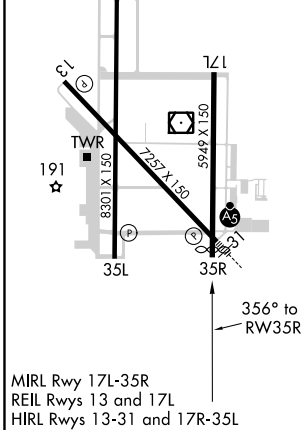
⚠ For uncompensated Baro-VNAV systems, LNAV/VNAV NA below -15°C (5°F) or above 54°C (130°F). DME/DME RNP-0.3 NA. Visibility reduction by helicopters NA. When local altimeter setting not received, use Port Isabel altimeter setting and increase all DA 42 feet and all MDA 60 feet; increase LPV and LNAV/VNAV all Cats visibility 1/8 mile, LNAV Cats C/D and Circling Cat D visibility 1/4 mile. Baro-VNAV and VDP NA with Port Isabel altimeter setting.

MISSED APPROACH: Climb to 2000 direct BETVE and hold.

ATIS 124.85	VALLEY APP CON 120.7 279.5	HARLINGEN TOWER * 119.3 (CTAF) 317.6	GND CON 121.7	UNICOM 122.95
-----------------------	--------------------------------------	--	-------------------------	-------------------------



ELEV 36	D	TDZE 36
---------	----------	---------



CATEGORY	A	B	C	D
LPV DA		286-3/4	250 (300-3/4)	
LNAV/VNAV DA		286-3/4	250 (300-3/4)	
LNAV MDA		400-1	364 (400-1)	
CIRCLING	500-1	464 (500-1)	500-1 1/2 464 (500-1 1/2)	680-2 644 (700-2)