

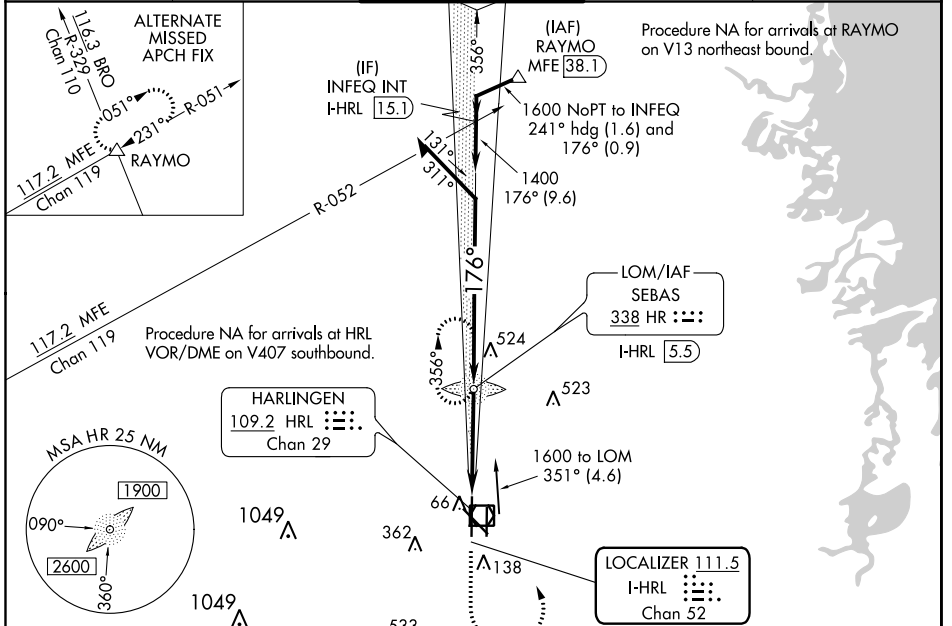
LOC/DME I-HRL <b>111.5</b> Chan <b>52</b>	APP CRS <b>176°</b>	Rwy Idg TDZE Apt Elev	<b>8301</b> <b>35</b> <b>36</b>
---	------------------------	-----------------------------	---------------------------------------

# ILS or LOC RWY 17R

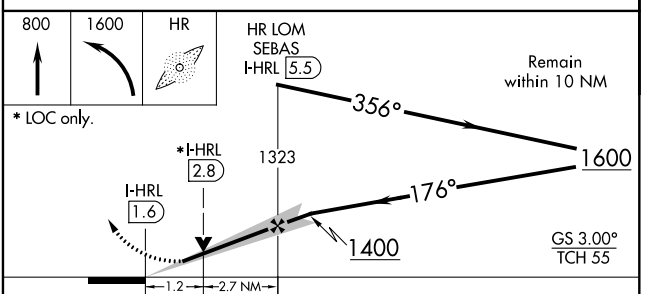
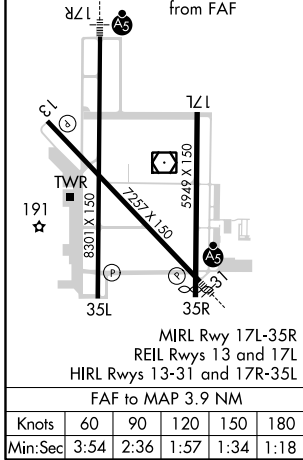
VALLEY INTL (HRL)

ADF or DME required.	MALSR 	MISSED APPROACH: Climb to 800 then climbing left turn to 1600 direct SEBAS LOM/I-HRL 5.5 DME and hold.
<p>▼ For inop ALS, increase S-ILS Cat E visibility to RVR 4000, increase S-LOC Cat E visibility to 1/2 SM. Procedure turn NA Cat E.</p> <p>▲ #RVR 1800 authorized with the use of FD or AP or HUD to DA.</p>		

ATIS <b>124.85</b>	VALLEY APP CON <b>120.7 279.5</b>	HARLINGEN TOWER ★ <b>119.3 (CTAF) 0 317.6</b>	GND CON <b>121.7</b>	UNICOM <b>122.95</b>
-----------------------	--------------------------------------	--	-------------------------	-------------------------



ELEV 36	<b>D</b>	TDZE 35
---------	----------	---------



CATEGORY	A	B	C	D	E
S-ILS 17R#	235/24 200 (200-1/2)				
S-LOC 17R	480/24 445 (500-1/2)	480/45 445 (500-7/8)	480/50 445 (500-1)		
<input checked="" type="checkbox"/> CIRCLING	500-1 464 (500-1)	560-1 524 (600-1)	680-1 3/4 644 (700-1 3/4)	680-2 644 (700-2)	NA

SC-3, 10 SEP 2020 to 08 OCT 2020

SC-3, 10 SEP 2020 to 08 OCT 2020