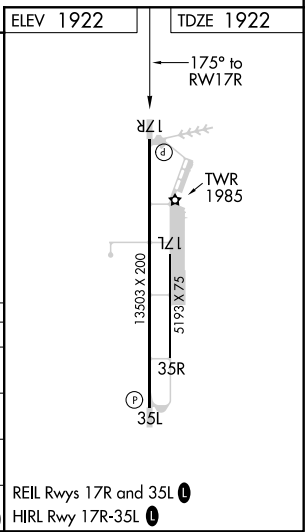
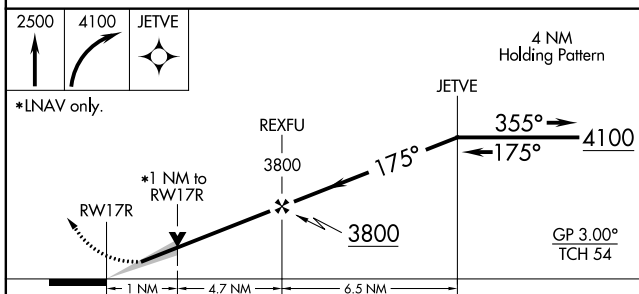
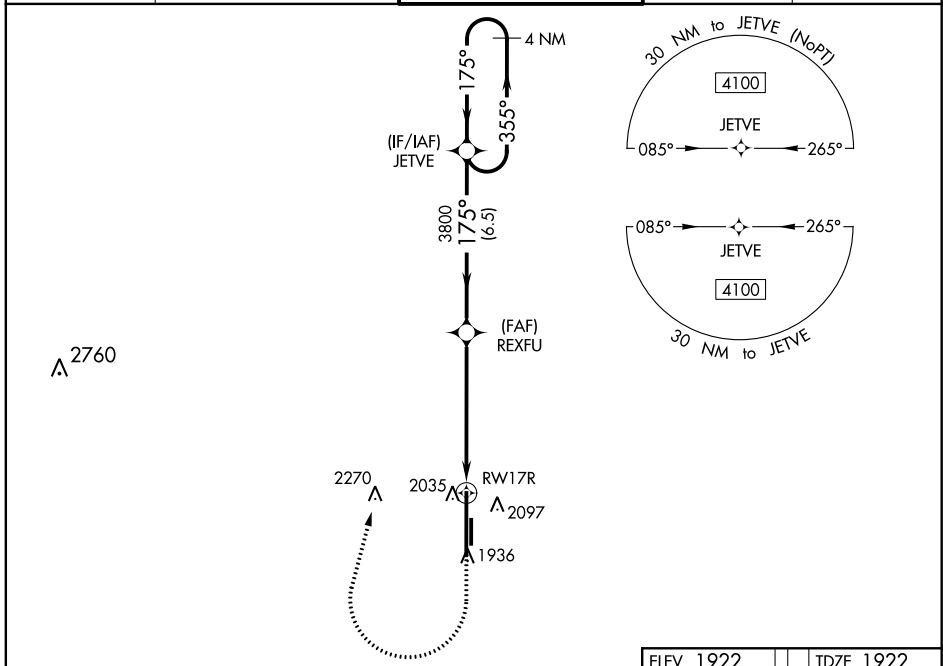


WAAS CH 86717 W17A	APP CRS 175°	Rwy Idg 13503 TDZE 1922 Apt Elev 1922
---------------------------------	------------------------	--

RNAV (GPS) RWY 17R

CLINTON-SHERMAN (CSM)

<p>▼ For uncompensated Baro-VNAV systems, LNAV/VNAV NA below -12°C (11°F) or above 54°C (130°F). Circling NA east of Rwy 17R-35L. DME/DME RNP-0.3 NA.</p>		<p>MISSED APPROACH: Climb to 2500 then climbing right turn to 4100 direct JETVE and hold.</p>		
ASOS 118.45	FORT WORTH CENTER 128.4 269.37	CLINTON-SHERMAN TOWER ★ 119.6 (CTAF) 0 256.9	GND CON 121.7 239.0	UNICOM 122.95



CATEGORY	A	B	C	D	E
LPV DA		2122-3/4	200 (200-3/4)		
LNAV/VNAV DA		2234-1	312 (400-1)		
LNAV MDA		2300-1	378 (400-1)		
CIRCLING	2340-1 418 (500-1)	2380-1 458 (500-1)	2380-1 1/2 458 (500-1 1/2)	2620-2 1/4 698 (700-2 1/4)	2620-2 1/2 698 (700-2 1/2)

SC-1, 10 SEP 2020 to 08 OCT 2020

SC-1, 10 SEP 2020 to 08 OCT 2020