

# JOE POOL ONE DEPARTURE

## TAKEOFF MINIMUMS

Rwy 33: Standard.

Rwy 15: 400-2½ or standard with minimum climb of 325' per NM to 1100.

ATIS 133.4  
 CLNC DEL 119.55  
 GND CON 121.6  
 ★ ADDISON TOWER 126.0 (CTAF) 239.0  
 REGIONAL DEP CON 124.3 282.275

**MAVERICK**  
 113.1 TTT  
 Chan 78  
 N32°52.15'  
 W97°02.43'

**WACO**  
 115.3 ACT  
 Chan 100  
 N31°39.74'  
 W97°16.14'  
 L-19, H-6

**HOARY**  
 N30°34.63'  
 W97°46.52'  
 L-19-21, H-7

**CENTEX**  
 112.8 CWK  
 Chan 75

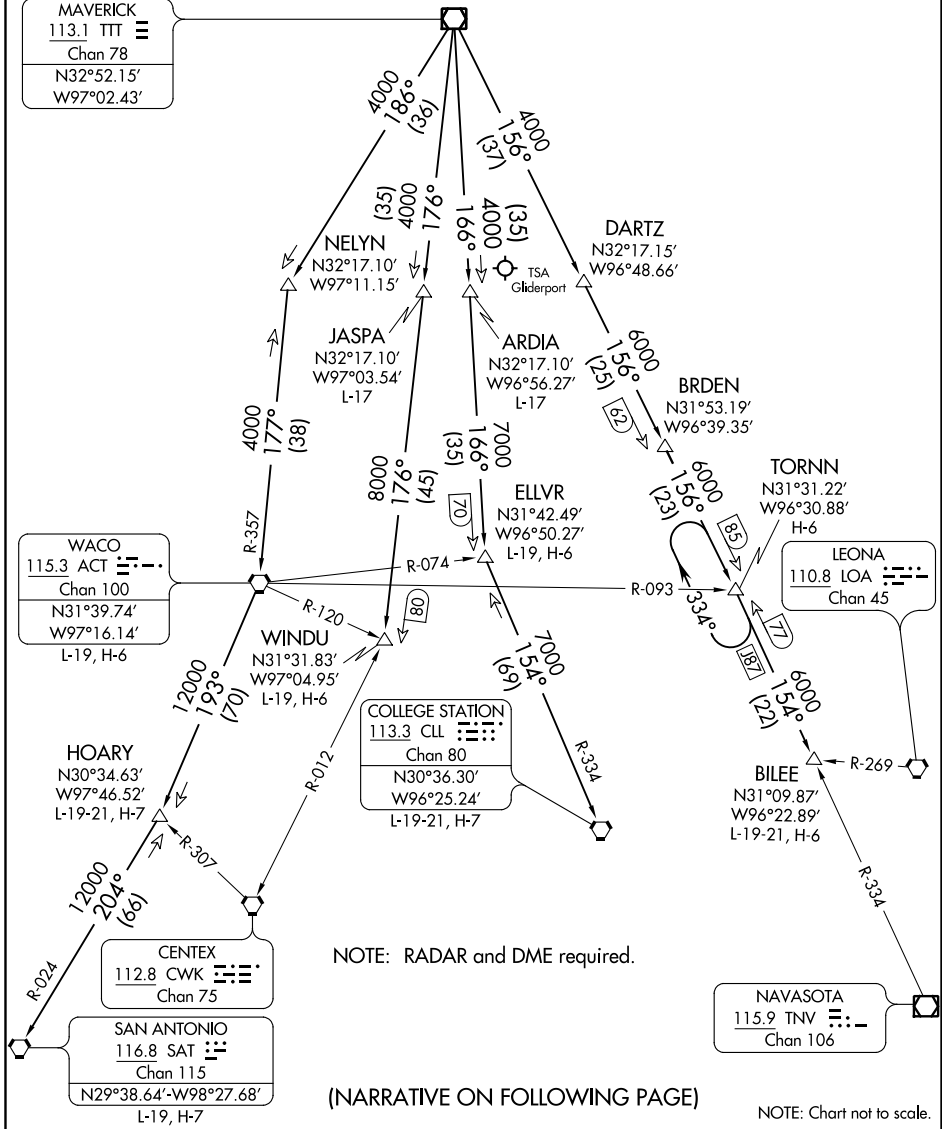
**SAN ANTONIO**  
 116.8 SAT  
 Chan 115  
 N29°38.64'-W98°27.68'  
 L-19, H-7

**COLLEGE STATION**  
 113.3 CLL  
 Chan 80  
 N30°36.30'  
 W96°25.24'  
 L-19-21, H-7

NOTE: RADAR and DME required.

(NARRATIVE ON FOLLOWING PAGE)

NOTE: Chart not to scale.



SC-2, 10 SEP 2020 to 08 OCT 2020

SC-2, 10 SEP 2020 to 08 OCT 2020

# JOE POOL ONE DEPARTURE