


LOC/DME I-CHO 111.7 Chan 54	APP CRS 030°	Rwy Idg TDZE Apt Elev 6801 640 640
------------------------------------------	------------------------	------------------------------------------------------------------------

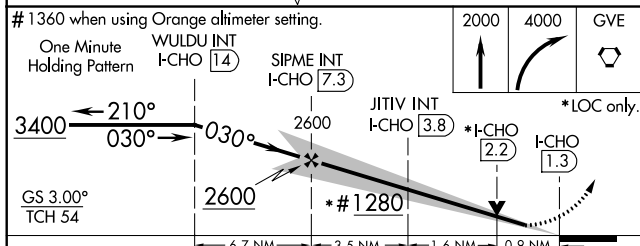
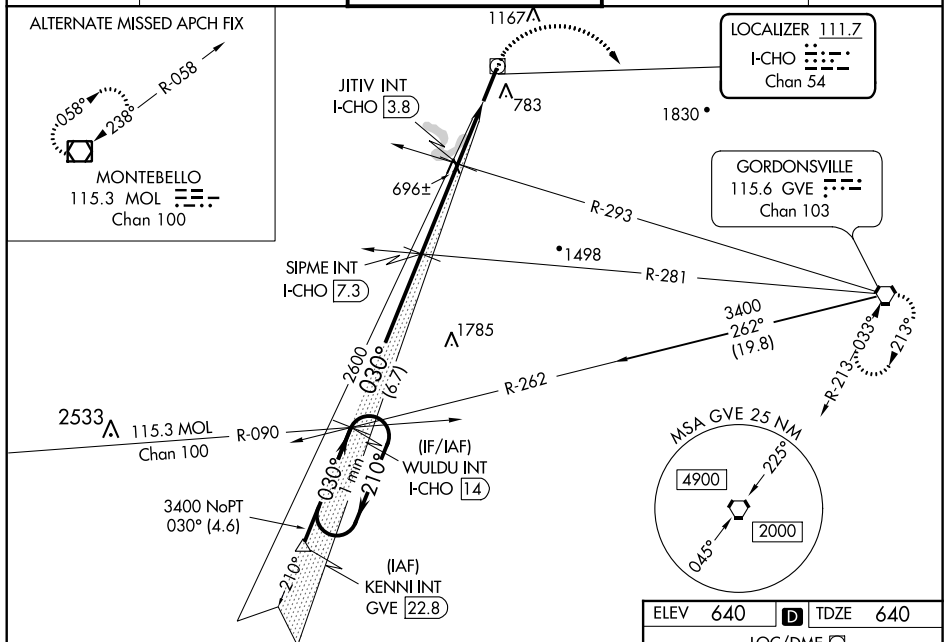
ILS or LOC RWY 3

CHARLOTTESVILLE-ALBEMARLE (CHO)

▼ When local altimeter setting not received, use Orange altimeter setting and increase S-ILS 3 DA to 912 and all MDA 80 feet; increase S-LOC 3 Cats C/D, Circling Cats C/D, JITIV fix minimums S-LOC 3 Cats C/D, and JITIV fix minimums Circling Cats C/D visibility ¼ mile. VDP NA when using Orange altimeter setting. For inop ALS when using Orange altimeter setting increase S-ILS 3 all Cats visibility to ¾, S-LOC 3 Cats C, D visibility to 2 miles, and S-LOC 3 JITIV fix minimums Cat C, D visibility to 1½ mile.

MALSRL

MISSED APPROACH:
 Climb to 2000 then climbing right turn to 4000 direct GVE VORTAC and hold.

ATIS 118.425	POTOMAC APP CON 132.85 323.125	CHARLOTTESVILLE TOWER ★ 124.5 (CTAF) 338.275	GND CON 121.9 338.275	UNICOM 122.95
------------------------	------------------------------------------	--------------------------------------------------------	---------------------------------	-------------------------



ELEV 640	TDZE 640
----------	----------

LOC/DME
 674±
 670±
 TWR 685
 760
 030° 6 NM from FAF
 HIRL Rwy 3-21
 REIL Rwy 21
 FAF to MAP 6 NM

Knots	60	90	120	150	180
Min:Sec	6:00	4:00	3:00	2:24	2:00

CATEGORY	A	B	C	D
S-ILS 3		840-½	200 (200-½)	
S-LOC 3	1280-½	640 (700-½)	1280-1¾	640 (700-1¾)
C CIRCLING	1280-1	640 (700-1)	1500-2½	1500-2¾
JITIV FIX MINIMUMS (DUAL VOR RECEIVERS OR DME REQUIRED)				
S-LOC 3	980-½	340 (400-½)	980-5/8	340 (400-5/8)
C CIRCLING	1100-1	460 (500-1)	1500-2½	1500-2¾

NE-3, 10 SEP 2020 to 08 OCT 2020

NE-3, 10 SEP 2020 to 08 OCT 2020