

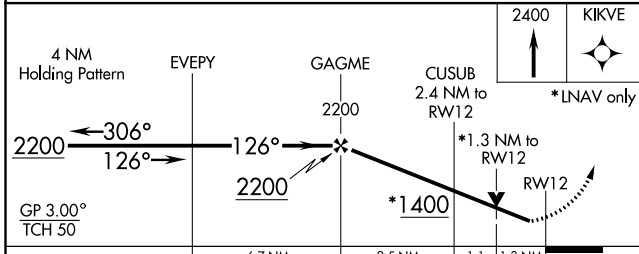
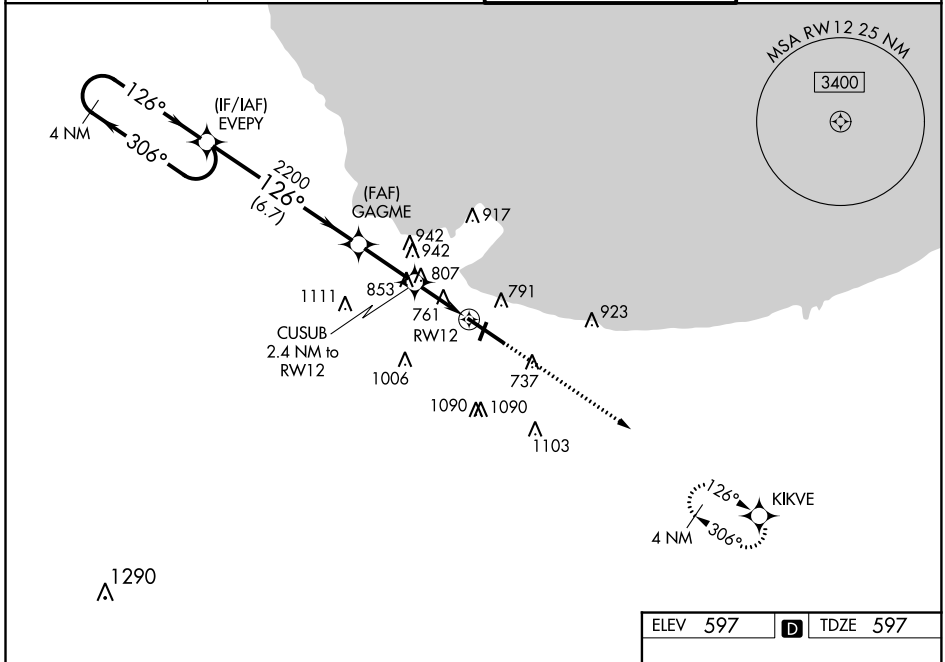
WAAS CH 70623 W12A	APP CRS 126°	Rwy Idg TDZE Apt Elev	7959 597 597
--	------------------------	-----------------------------	---

RNAV (GPS) Y RWY 12

GARY/CHICAGO INTL (GYY)

<p>▽ ▲</p>	<p>For uncompensated Baro-VNAV systems, LNAV/VNAV NA below -16°C (4°F) or above 54°C (130°F). DME/DME RNP-0.3 NA. Rwy 12 helicopter visibility reduction below ¾ SM NA.</p>	<p>MISSED APPROACH: Climb to 2400 direct KIKVE and hold.</p>
------------------------------	---	--

<p>ATIS 134.575</p>	<p>CHICAGO APP CON 133.1 285.6</p>	<p>GARY TOWER ★ 125.6 (CTAF) 0</p>	<p>GND CON 121.9</p>
--------------------------------	---	---	---------------------------------



ELEV 597	D	TDZE 597
----------	----------	----------

The airport diagram shows RWY 12, RWY 20, and RWY 12-30. Taxiways include TWY 662, TWY 672, TWY 677, TWY 680, TWY 682, TWY 684, TWY 686, TWY 688, TWY 690, TWY 692, TWY 694, TWY 696, TWY 698, TWY 700, TWY 702, TWY 704, TWY 706, TWY 708, TWY 710, TWY 712, TWY 714, TWY 716, TWY 718, TWY 720, TWY 722, TWY 724, TWY 726, TWY 728, TWY 730, TWY 732, TWY 734, TWY 736, TWY 738, TWY 740, TWY 742, TWY 744, TWY 746, TWY 748, TWY 750. Obstacles are marked with their MSL altitudes: 640, 627, 672, 677, 680, 682, 684, 686, 688, 690, 692, 694, 696, 698, 700, 702, 704, 706, 708, 710, 712, 714, 716, 718, 720, 722, 724, 726, 728, 730, 732, 734, 736, 738, 740, 742, 744, 746, 748, 750.

REIL Rwy 2, 12 and 20
HIRL Rwy 12-30
MIRL Rwy 2-20

EC-2, 10 SEP 2020 to 08 OCT 2020

EC-2, 10 SEP 2020 to 08 OCT 2020