

VOR/DME PWA <b>113.4</b> Chan <b>81</b>	APP CRS <b>176°</b>	Rwy Idg TDZE Apt Elev	<b>6844</b> <b>1291</b> <b>1300</b>
---	------------------------	-----------------------------	---

# VOR RWY 17L

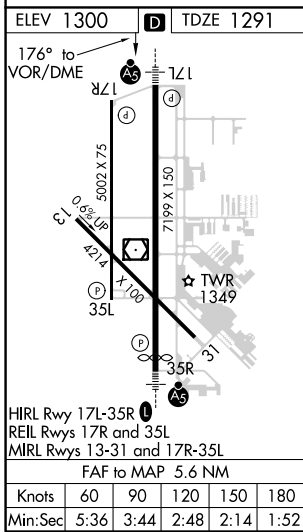
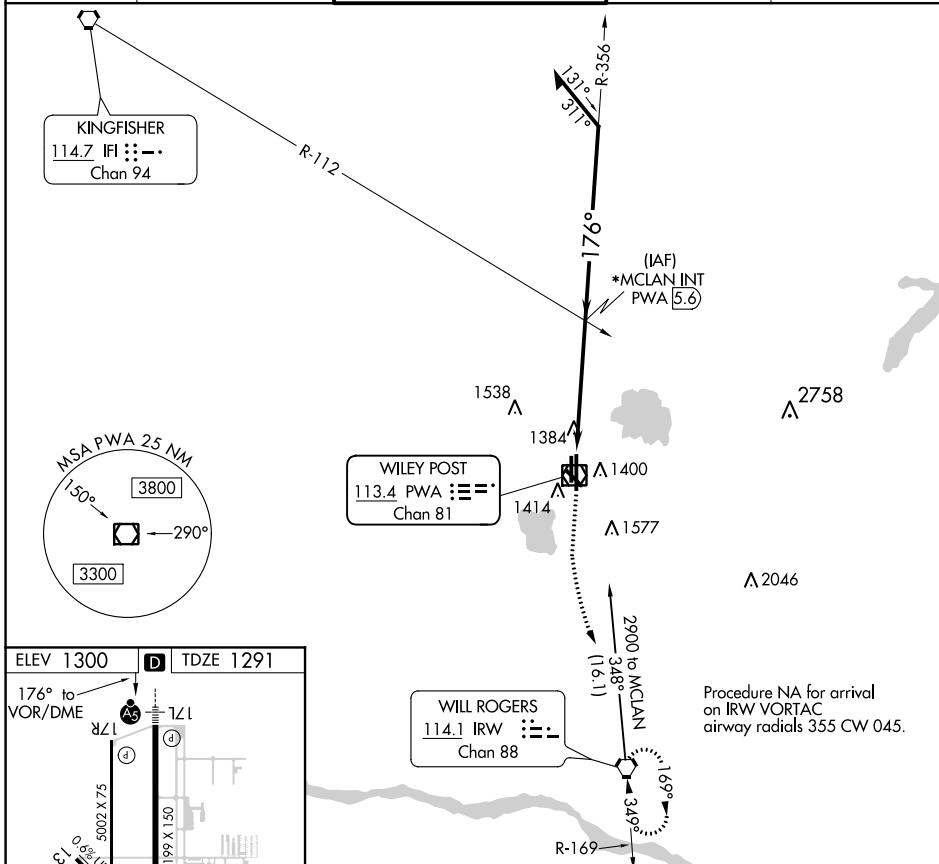
WILEY POST (PWA)

VDP NA when using Will Rogers World altimeter setting. For inop ALS, increase S-17L Cat C/D visibility to 1 SM. For inop ALS, when using Will Rogers World altimeter setting, increase Cat C/D visibility to 1½ SM. When local altimeter setting not received, use ASR Will Rogers World altimeter setting and increase all MDA 40 feet and increase Cat C/D visibility ½ SM. \*RADAR fix in lieu of MCLAN INT will be provided on pilot request.



MISSED APPROACH: Climb to 1700 then climbing left turn to 3000 direct IRW VORTAC and hold.

ATIS <b>128.725</b>	OKE CITY APP CON <b>124.6 266.8</b>	WILEY POST TOWER* <b>126.9(CTAF) 306.9</b>	GND CON <b>121.7</b>	UNICOM <b>122.95</b>
------------------------	--	---	-------------------------	-------------------------



1700	3000	IRW	*MCLAN INT PWA 5.6	Remain within 10 NM
PWA VOR/DME		PWA 1.7	2800	2800
≤ 2.80% TCH 54		VGS1 and descent angles not coincident (VGS1 Angle 3.00/TCH 54).		
CATEGORY	A	B	C	D
S-17L	1660-½	369 (400-½)	1660-⅝	369 (400-⅝)

SC-1, 10 SEP 2020 to 08 OCT 2020

SC-1, 10 SEP 2020 to 08 OCT 2020