

WAAS CH 78437 W35B	APP CRS 355°	Rwy ldg TDZE Apt Elev	5001 1275 1300
--	------------------------	-----------------------------	---

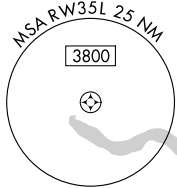
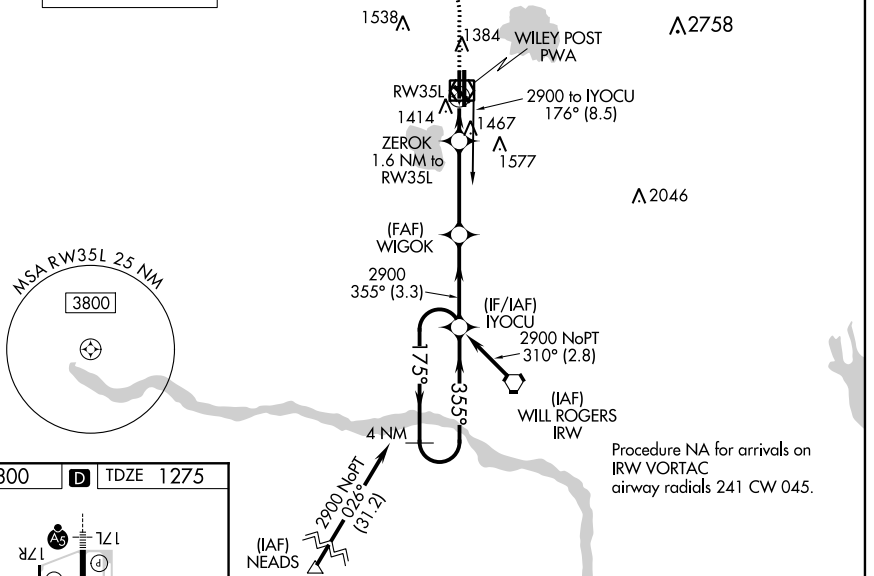
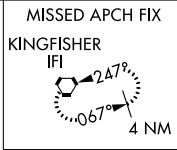
RNAV (GPS) RWY 35L

WILEY POST (PWA)

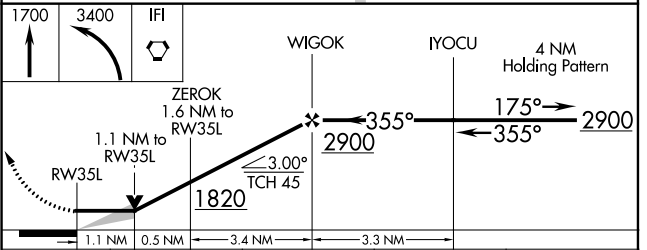
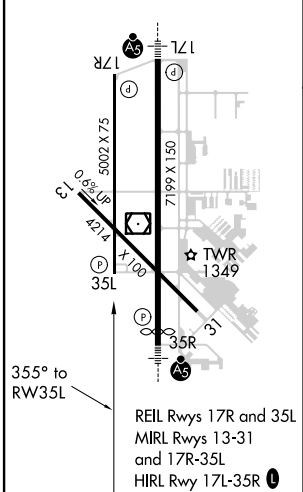
ASR DME/DME RNP-0.3 NA. VDP NA when using Will Rogers World altimeter setting. When local altimeter setting not received, use Will Rogers World altimeter setting and increase all MDA 40 feet; increase LP Cat C/D visibility 1/8 mile and Circling Cat C 1/4 mile.

MISSED APPROACH: Climb to 1700 then climbing left turn to 3400 direct IFI VORTAC and hold.

ATIS 128.725	OKE CITY APP CON 124.6 266.8	WILEY POST TOWER ★ 126.9(CTAF) 306.9	GND CON 121.7	UNICOM 122.95
------------------------	--	--	-------------------------	-------------------------



ELEV 1300	D	TDZE 1275
-----------	----------	-----------



CATEGORY		A	B	C	D
LP	MDA	1660-1	385 (400-1)	1660-1/8	385 (400-1/8)
LNAV	MDA	1720-1	445 (500-1)	1720-1/8	445 (500-1/8)
C CIRCLING		1780-1	480 (500-1)	1880-1/2 580 (600-1/2)	1880-2 580 (600-2)

SC-1, 10 SEP 2020 to 08 OCT 2020

SC-1, 10 SEP 2020 to 08 OCT 2020