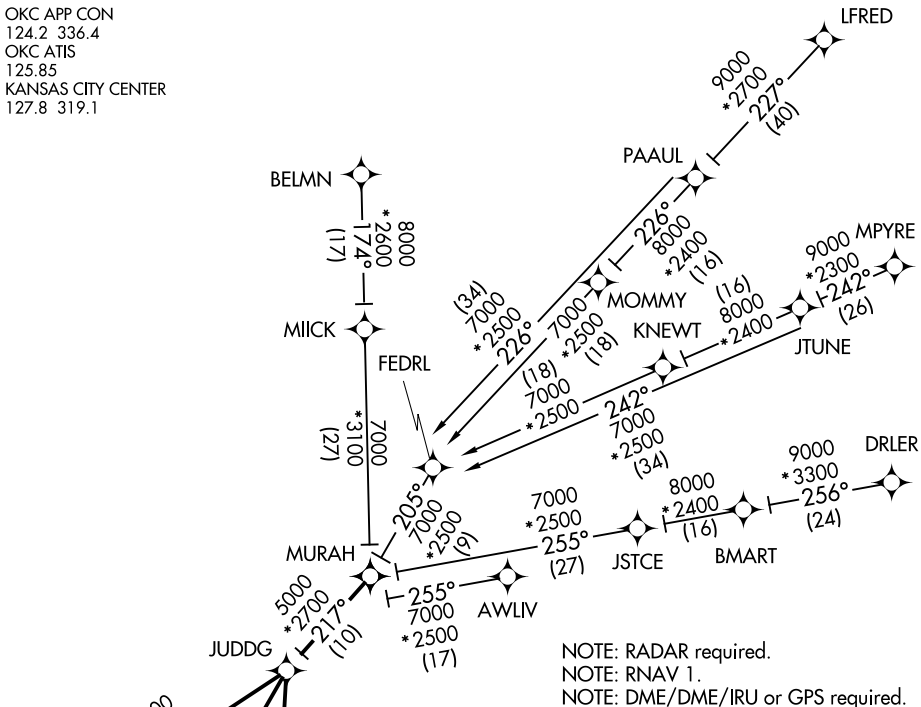


JUDDG TWO ARRIVAL (RNAV)

OKLAHOMA CITY, OKLAHOMA

OKC APP CON
124.2 336.4
OKC ATIS
125.85
KANSAS CITY CENTER
127.8 319.1



NOTE: RADAR required.
NOTE: RNAV 1.
NOTE: DME/DME/IRU or GPS required.

ARRIVAL ROUTE DESCRIPTION

- AWLIV TRANSITION (AWLIV.JUDDG2)
- BELMN TRANSITION (BELMN.JUDDG2): (For non-GPS equipped aircraft, IFI DME must be operational).
- BMART TRANSITION (BMART.JUDDG2)
- DRLER TRANSITION (DRLER.JUDDG2)
- JTUNE TRANSITION (JTUNE.JUDDG2)
- LFRED TRANSITION (LFRED.JUDDG2)
- MPYRE TRANSITION (MPYRE.JUDDG2)
- PAAUL TRANSITION (PAAUL.JUDDG2)

From MURAH on track 217° to JUDDG.

LANDING OUN/TIK: From JUDDG on track 192° to PEGOE, then on track 192°. Expect radar vectors to final approach course.

LANDING PWA RWY 17L: From JUDDG on track 236° to ODPIE, then on track 236°. Expect radar vectors to final approach course.

LANDING PWA RWY 35R: From JUDDG on track 225° to QUOIT, then on track 225°. Expect radar vectors to final approach course.

NOTE: Chart not to scale.

JUDDG TWO ARRIVAL (RNAV)

OKLAHOMA CITY, OKLAHOMA

SC-1, 10 SEP 2020 to 08 OCT 2020

SC-1, 10 SEP 2020 to 08 OCT 2020