

WAAS CH <b>62910</b> <b>W25A</b>	APP CRS <b>249°</b>	Rwy Idg TDZE Apt Elev	<b>5299</b> <b>1721</b> <b>1723</b>
--	------------------------	-----------------------------	---

# RNAV (GPS) RWY 25

CHAUTAUQUA COUNTY/JAMESTOWN (JHW)

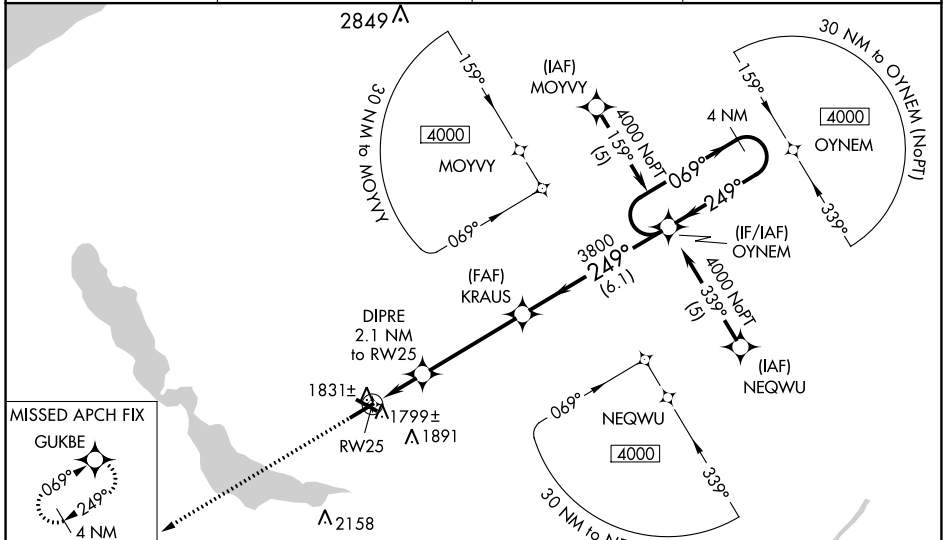
**⚠** For uncompensated Baro-VNAV systems, LNAV/VNAV NA below -18°C (0°F) or above 54°C (130°F). DME/DME RNP-0.3 NA. When local altimeter setting not received, use Dunkirk altimeter setting: increase LPV DA to 2113 feet and visibility all Cats ½ SM, LNAV/VNAV DA to 2246 feet and visibility all Cats ½ SM; increase all MDAs 200 feet and visibility LNAV Cat C ½ SM, LNAV Cat D ¼ SM, Circling Cat C ½ SM and Circling Cat D ¾ SM. For inoperative MALSR, increase LNAV Cat D visibility to 1¼ mile. For inoperative MALSR when using Dunkirk altimeter setting, increase LPV all Cats visibility to 1½ mile. Baro-VNAV and VDP NA when using Dunkirk altimeter setting. Circling to Rwy 13/31 NA at night.

MALSR

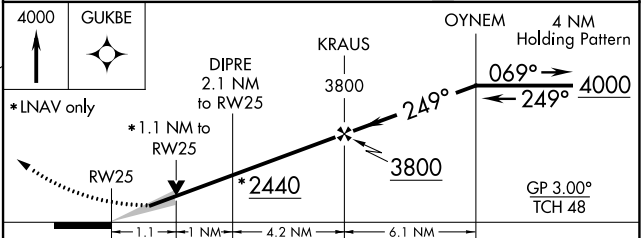
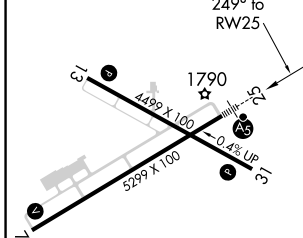


**MISSED APPROACH:**  
Climb to 4000 direct GUKBE and hold.

AWOS-3PT <b>118.425</b>	BUFFALO APP CON * <b>126.05</b>	CLNC DEL <b>126.05</b>	UNICOM <b>122.7 (CTAF) 0</b>
----------------------------	------------------------------------	---------------------------	---------------------------------



ELEV 1723	<b>D</b>	TDZE 1721
-----------	----------	-----------



CATEGORY	A	B	C	D
LPV DA		1921-½	200 (200-½)	
LNAV/VNAV DA		2054-¾	333 (400-¾)	
LNAV MDA		2100-½	379 (400-½)	2100-1 379 (400-1)
<b>C</b> CIRCLING	2200-1	477 (500-1)	2240-1½ 517 (600-1½)	2340-2 617 (700-2)

REIL Rwy 31 0  
MIRL Rwy 13-31 0  
HIRL Rwy 7-25 0

NE-2, 10 SEP 2020 to 08 OCT 2020

NE-2, 10 SEP 2020 to 08 OCT 2020