

| | | | |
|----------------------------------------|------------------------|-----------------------------|-------------------------------------------|
| WAAS CH 42630 W16A | APP CRS 167° | Rwy Idg TDZE Apt Elev | 6005 1252 1252 |
|----------------------------------------|------------------------|-----------------------------|-------------------------------------------|

RNAV (GPS) RWY 16

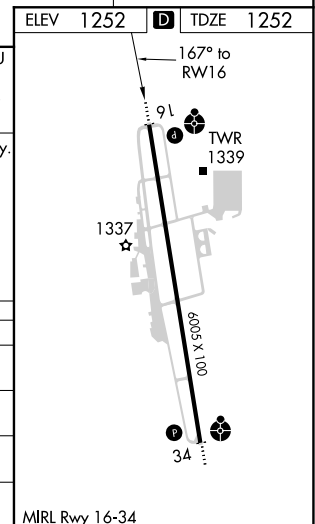
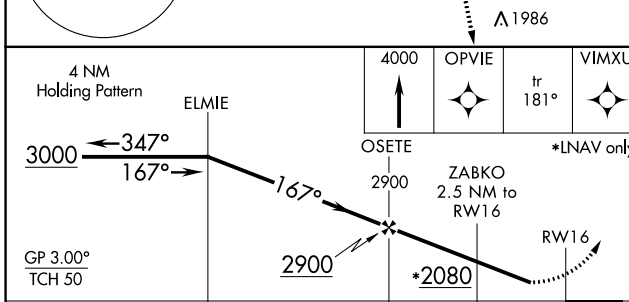
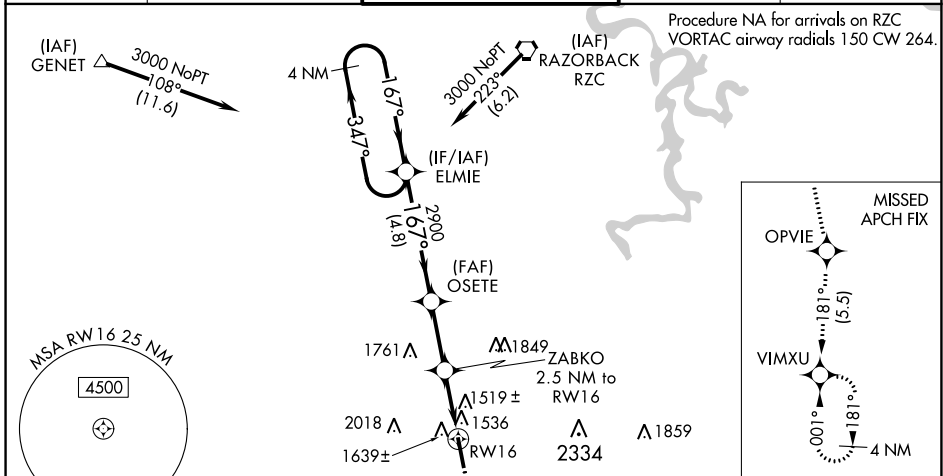
DRAKE FIELD (FYV)

⚠ Baro-VNAV NA when using Springdale altimeter setting. For uncompensated Baro-VNAV systems, LNAV/VNAV NA below -17°C (2°F) or above 54°C (130°F).
⚠ When VGSI inop, Straight-in/Circling Rwy 16 procedure NA at night. Circling NA east of Rwy 16-34. DME/DME RNP-0.3 NA. Visibility reduction by helicopters NA. When local altimeter setting not received, use Springdale altimeter setting and increase all DA and MDA 40 feet. Increase LPV all Cats visibility and LNAV Cats C and D visibility 1/8 mile and LNAV/VNAV all Cats visibility 3/8 mile. For inop ODALS, increase LPV all Cats visibility 1/8 mile, LNAV/VNAV all Cats visibility 3/8 mile and LNAV Cats C and D visibility 1/4 mile. For inop ODALS, when using Springdale altimeter setting, increase LPV all Cats visibility to 1 1/8 miles and LNAV Cats C and D visibility to 2 miles. Inop table does not apply when using Springdale altimeter setting to LNAV/VNAV all Cats and LNAV Cats A and B.

ODALS

MISSED APPROACH:
Climb to 4000 direct OPVIE and on track 181° to VIMXU and hold.

| | | | | |
|------------------------|--------------------------------------------|-------------------------------------------|-------------------------|-------------------------|
| ATIS 119.575 | RAZORBACK APP CON* 121.0 244.575 | DRAKE TOWER* 128.0 (CTAF) 371.9 | GND CON 121.8 | UNICOM 122.95 |
|------------------------|--------------------------------------------|-------------------------------------------|-------------------------|-------------------------|



| CATEGORY | A | B | C | D |
|-------------------|--------|-------------|-----------------|-----------------|
| LPV DA | | 1714-1 3/8 | 462 (500-1 3/8) | |
| LNAV/VNAV DA | | 1856-1 7/8 | 604 (700-1 1/8) | |
| LNAV MDA | 1900-1 | 648 (700-1) | 1900-1 3/4 | 648 (700-1 3/4) |
| C CIRCLING | 2000-1 | 748 (800-1) | 2320-3 | 1068 (1100-3) |

SC-1, 10 SEP 2020 to 08 OCT 2020

SC-1, 10 SEP 2020 to 08 OCT 2020