

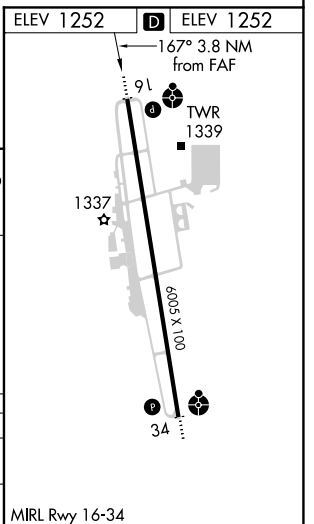
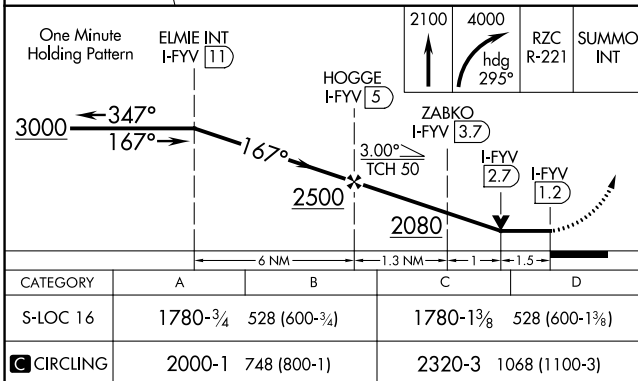
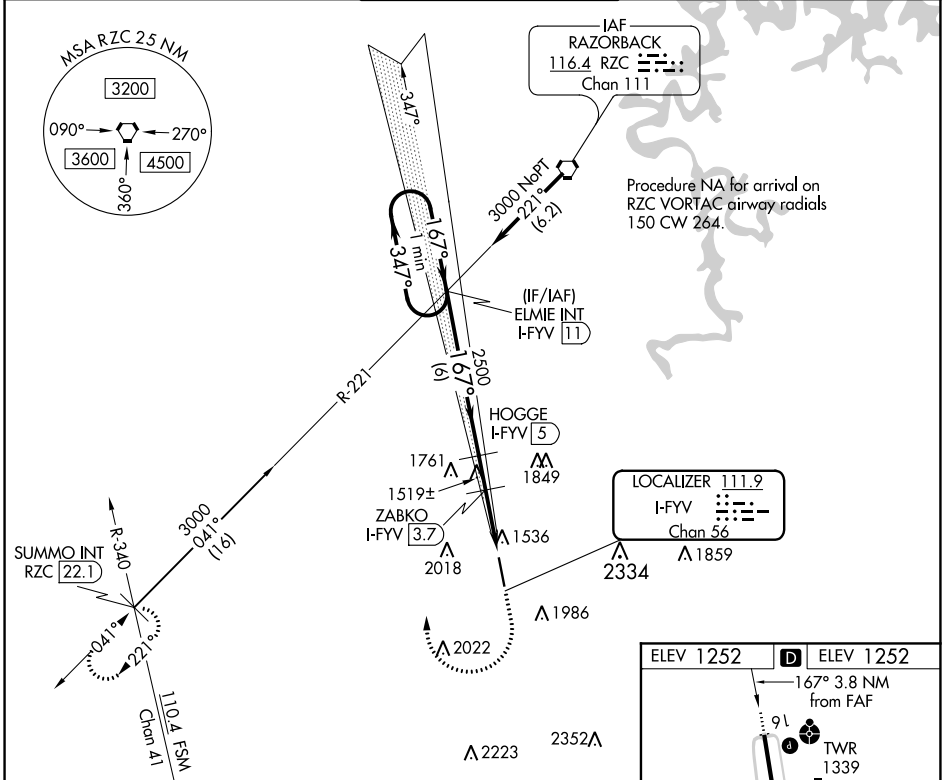
LOC/DME I-FYV <b>111.9</b> Chan <b>56</b>	APP CRS <b>167°</b>	Rwy Idg <b>6005</b> TDZE <b>1252</b> Apt Elev <b>1252</b>
---	------------------------	---

# LOC RWY 16

DRAKE FIELD (FYV)

<b>⚠</b> Circling NA east of Rwy 16-34. Rwy 16 helicopter visibility reduction below 3/4 SM NA. DME required.	<b>ODALS</b> 	<b>MISSED APPROACH:</b> Climb to 2100 then climbing right turn to 4000 on heading 295° and RZC VORTAC R-221 to SUMMO INT/RZC 22.1 DME and hold.
---	------------------	---

<b>ATIS</b> <b>119.575</b>	<b>RAZORBACK APP CON*</b> <b>121.0 244.575</b>	<b>DRAKE TOWER*</b> <b>128.0 (CTAF) 371.9</b>	<b>GND CON</b> <b>121.8</b>	<b>UNICOM</b> <b>122.95</b>
-------------------------------	---	--	--------------------------------	--------------------------------



SC-1, 10 SEP 2020 to 08 OCT 2020

SC-1, 10 SEP 2020 to 08 OCT 2020