

WAAS CH 65799 W06A	APP CRS 057°	Rwy Idg TDZE Apt Elev	5000 1212 1212
--	------------------------	-----------------------------	---

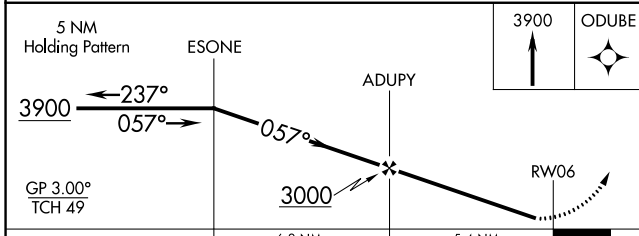
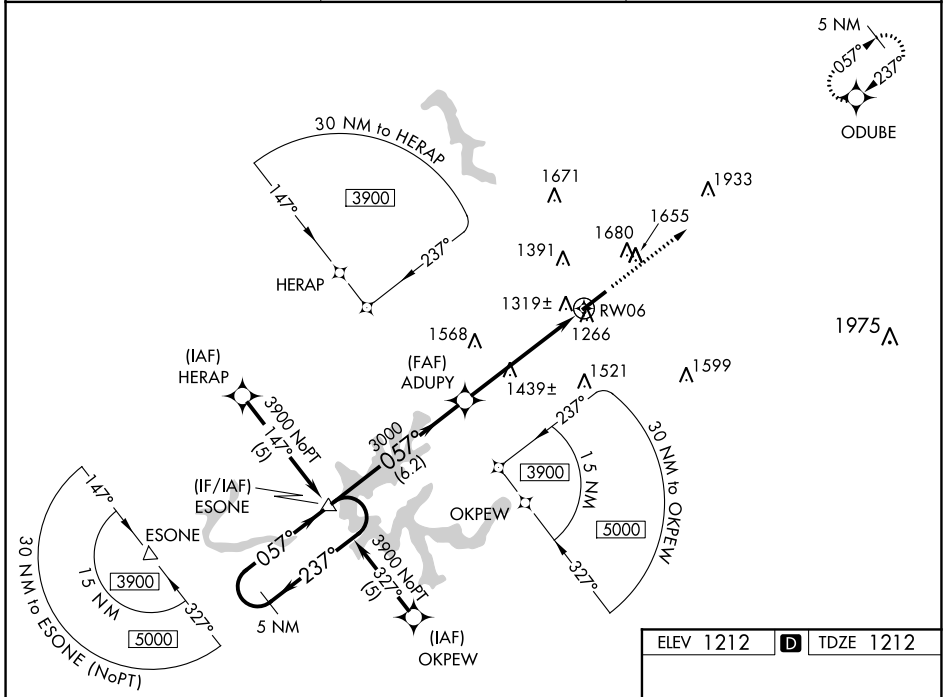
RNAV (GPS) RWY 6

LONDON-CORBIN AIRPORT-MAGEE FIELD (LOZ)

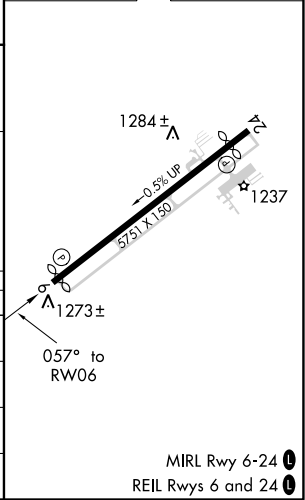
▽ DME/DME RNP-0.3 NA. Visibility reduction by helicopters NA. When local altimeter setting not received, use Somerset altimeter setting and increase all DAs/MDAs 100 feet and increase visibility LPV ¼ mile all Cats, LNAV/VNAV ½ mile all Cats, LNAV Cat C ¼ mile and Cat D ½ mile, and Circling Cat C/D ¼ mile. For uncompensated Baro-VNAV systems, LNAV/VNAV NA below -17° C (2° F) or above 46° C (116° F) Baro-VNAV and VDP NA when using Somerset altimeter setting.

▲ MISSED APPROACH: Climb to 3900 direct ODUBE and hold.

ASOS 119.075	INDIANAPOLIS CENTER 124.625 371.925	UNICOM 123.0 (CTAF) 0
------------------------	---	---------------------------------



ELEV 1212	D TDZE 1212
-----------	--------------------



CATEGORY	A	B	C	D
LPV DA		1466-1	254 (300-1)	
LNAV/VNAV DA		1602-1¼	390 (400-1¼)	
LNAV MDA	1720-1	508 (600-1)	1720-1½	508 (600-1½)
CIRCLING	1780-1	568 (600-1)	2040-2½	2040-2¾
			828 (900-2½)	828 (900-2¾)

RNAV (GPS) RWY 6

SE-1, 10 SEP 2020 to 08 OCT 2020

SE-1, 10 SEP 2020 to 08 OCT 2020

MIRL Rwy 6-24 **0**
REIL Rwy 6 and 24 **0**