

LOC/DME I-LOZ <b>110.9</b> Chan <b>46</b>	APP CRS <b>057°</b>	Rwy Idg TDZE Apt Elev	<b>5000</b> <b>1212</b> <b>1212</b>
---	------------------------	-----------------------------	---

# ILS or LOC RWY 6

LONDON-CORBIN AIRPORT-MAGEE FIELD (LOZ)

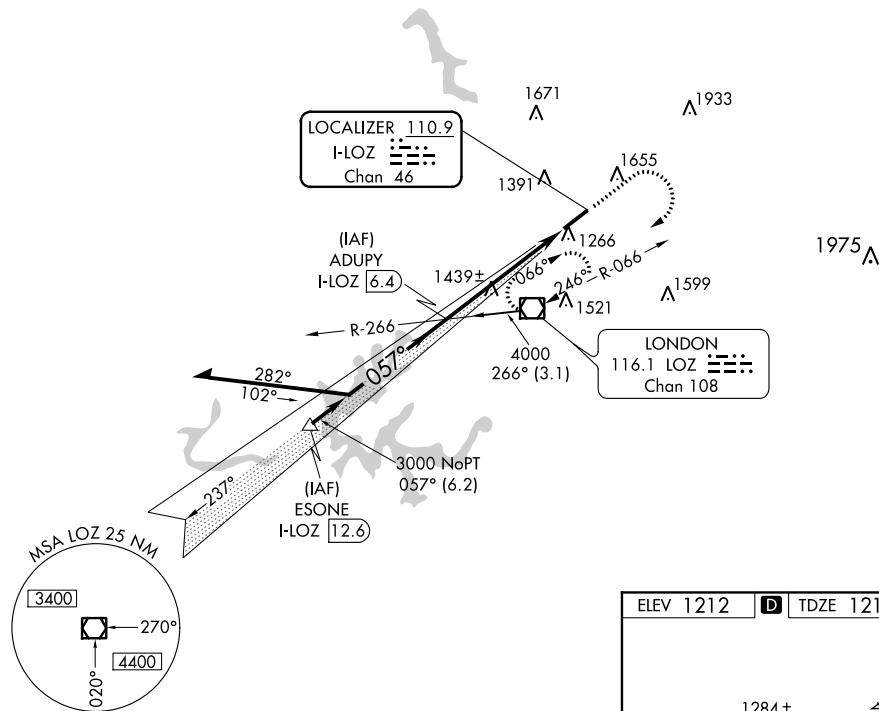
**⚠** Visibility reduction by helicopters NA. VDP NA when using Somerset altimeter setting. When local altimeter setting not received, use Somerset altimeter setting and increase all DAs/MDAs 100 feet, and increase visibility S-ILS 6 ¼ mile all Cats, S-LOC 6 Cat C ¼ mile Cat D ½ mile and Circling Cats C/D ¼ mile.

**MISSED APPROACH:** Climb to 2000 then climbing right turn to 4000 direct LOZ VOR/DME and hold, continue climb-in-hold to 4000.

ASOS  
**119.075**

INDIANAPOLIS CENTER  
**124.625 371.925**

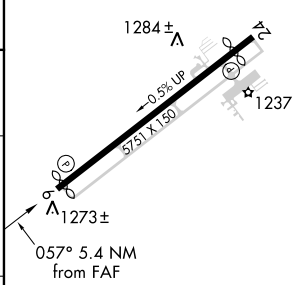
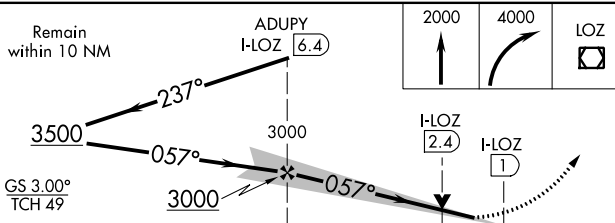
UNICOM  
**123.0 (CTAF)**



SE-1, 10 SEP 2020 to 08 OCT 2020

SE-1, 10 SEP 2020 to 08 OCT 2020

ELEV 1212 **D** TDZE 1212



CATEGORY	A	B	C	D
S-ILS 6		1462-1	250 (300-1)	
S-LOC 6	1720-1	508 (600-1)	1720-1½	508 (600-1½)
CIRCLING	1780-1	568 (600-1)	2040-2½ 828 (900-2½)	2040-2¾ 828 (900-2¾)

MIRL Rwy 6-24 **D**  
REIL Rwys 6 and 24 **D**

FAF to MAP 5.4 NM

Knots	60	90	120	150	180
Min:Sec	5:24	3:36	2:42	2:10	1:48

# ILS or LOC RWY 6