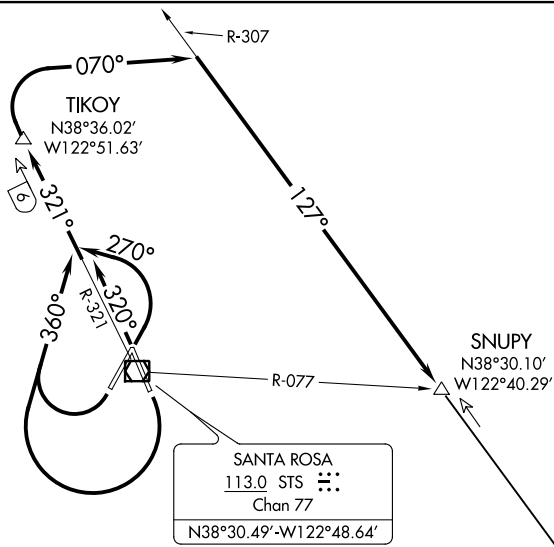


(STS8.SNUPY) 17341

SANTA ROSA EIGHT DEPARTURE

CHARLES M SCHULZ-SONOMA COUNTY (STS)
AL-696 (FAA) SANTA ROSA, CALIFORNIA

GND CON 121.9
SANTA ROSA TOWER ★ 118.5 363.0
OAKLAND CENTER 127.8 353.5



SANTA ROSA
113.0 STS
Chan 77
N38°30.49'-W122°48.64'

SCAGGS ISLAND
112.1 SGD
Chan 58
N38°10.76'-W122°22.39'
L-2-3

NOTE: DME required.

TAKEOFF MINIMUMS

- Rwy 2: Standard with minimum climb of 281' per NM to 3900.
- Rwy 14: Standard with minimum climb of 298' per NM to 2400.
- Rwy 20: Standard with minimum climb of 408' per NM to 2800.
- Rwy 32: Standard with minimum climb of 281' per NM to 2700.

NOTE: Chart not to scale.

DEPARTURE ROUTE DESCRIPTION

TAKEOFF RUNWAY 2: Climbing left turn heading 270°, thence

TAKEOFF RUNWAYS 14 and 20: Climbing right turn heading 360°, thence

TAKEOFF RUNWAY 32: Climb on heading 320°, thence

. . . . intercept and climb on STS R-321 to TIKOY/6 DME, then turn right heading 070° to intercept SGD R-307 to SNUPY INT/SGD 24 DME, then on (transition).

SCAGGS ISLAND TRANSITION (STS8.SGD): From over SNUPY INT/SGD 24 DME on SGD R-307 to SGD VORTAC.

SANTA ROSA EIGHT DEPARTURE

(STS8.SNUPY) 13NOV14

SANTA ROSA, CALIFORNIA
CHARLES M SCHULZ-SONOMA COUNTY (STS)

SW-2, 10 SEP 2020 to 08 OCT 2020

SW-2, 10 SEP 2020 to 08 OCT 2020