

WAAS CH 77812 W24A	APP CRS 246°	Rwy Idg 5425 TDZE 43 Apt Elev 54
--	------------------------	---

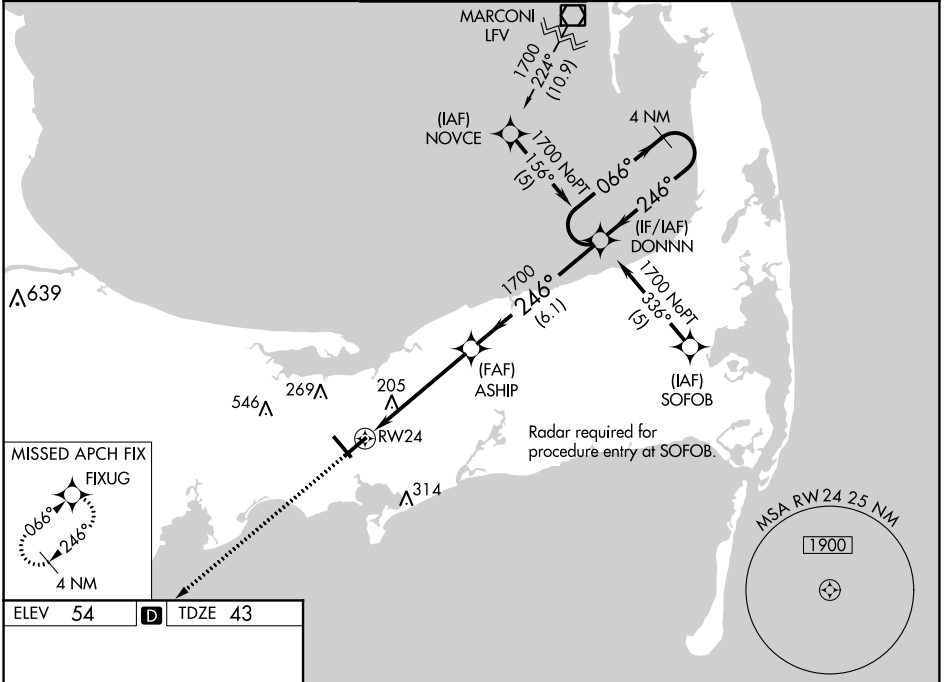
RNAV (GPS) RWY 24

BARNSTABLE MUNI-BOARDMAN/POLANDO FIELD (HYA)

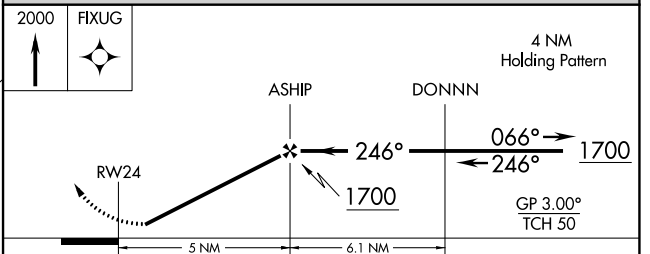
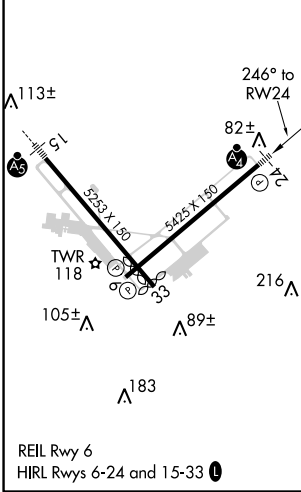
⚠ For uncompensated Baro-VNAV systems, LNAV/VNAV NA below -1.5°C (5°F) or above 48°C (118°F). DME/DME RNP -0.3 NA. Visibility reduction by helicopters NA. When local altimeter setting not received, use Chatham altimeter setting; increase LPV DA to 350 feet; increase LNAV/VNAV DA to 473 feet; increase all MDAs 40 feet and visibility Cats C and D ¼ SM. Baro-VNAV NA when using Chatham Muni altimeter setting. For inoperative MALSR, increase LNAV Cat C visibility to RVR 6000. Inoperative table does not apply to LPV all Cats, and LNAV Cats A and B.

MALSF
 MISSED APPROACH:
Climb to 2000 direct
FIXUG and hold.

ATIS 123.8	BOSTON APP CON ★ 118.2 284.6	HYANNIS TOWER ★ 119.5 (CTAF) 257.8	GND CON 118.45	CLNC DEL 125.15	UNICOM 122.95
----------------------	--	--	--------------------------	---------------------------	-------------------------



ELEV 54	D	TDZE 43
---------	----------	---------



CATEGORY	A	B	C	D
LPV DA		318/50	275 (300-1)	
LNAV/VNAV DA		441/50	398 (400-1)	
LNAV MDA		500/50	457 (500-1)	
C CIRCLING	560-1 506 (600-1)	580-1 526 (600-1)	860-2 ¼ 806 (900-2¼)	860-2 ½ 806 (900-2½)

NE-1, 10 SEP 2020 to 08 OCT 2020

NE-1, 10 SEP 2020 to 08 OCT 2020