


VOR/DME CMA 115.8 Chan 105	APP CRS 247°	Rwy Idg 5500 TDZE 44 Apt Elev 45
--	------------------------	---

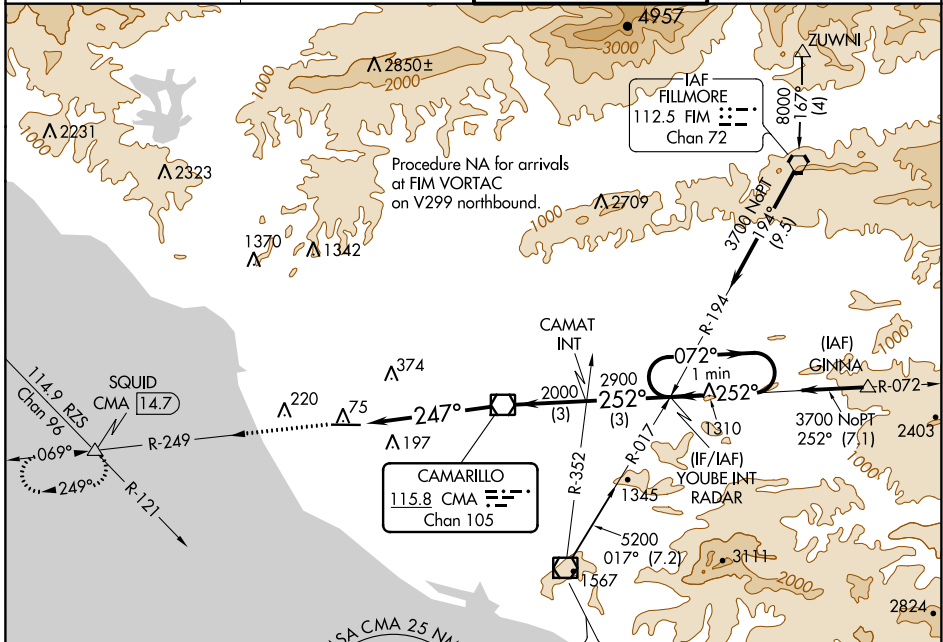
VOR RWY 25

OXNARD (OXR)

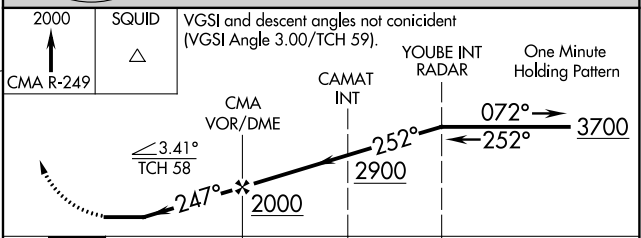
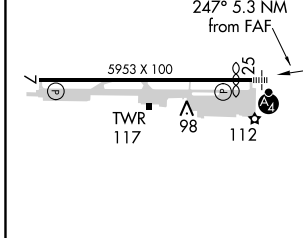
⚠ Inop table does not apply. When local altimeter setting not received, use Camarillo altimeter setting and increase all MDA 20 feet, increase Circling Cat D visibility ¼ mile. Rwy 25 helicopter visibility reduction below ¾ SM NA.

MALSF  MISSED APPROACH: Climb to 2000 on CMA R-249 to SQUID INT/14.7 DME and hold.

ATIS 118.05	POINT MUGU APP CON* 124.7 335.5	OXNARD TOWER* 134.95 (CTAF) 257.8	GND CON 121.9
-----------------------	---	---	-------------------------



ELEV 45	D	TDZE 44
---------	----------	---------



REIL Rwy 7 **Ⓛ**
MIRL Rwy 7-25 **Ⓛ**

FAF to MAP 5.3 NM

Knots	60	90	120	150	180
Min:Sec	5:18	3:32	2:39	2:07	1:46

CATEGORY	A	B	C	D
S-25	540-1	496 (500-1)	540-1 3/8	496 (500-1 1/8)
CIRCLING	540-1	495 (500-1)	540-1 1/2	700-2 495 (500-1 1/2)

SW-3, 10 SEP 2020 to 08 OCT 2020

SW-3, 10 SEP 2020 to 08 OCT 2020