

WAAS CH <b>72623</b> <b>W07A</b>	APP CRS <b>075°</b>	Rwy Idg TDZE Apt Elev	<b>5954</b> <b>37</b> <b>45</b>
--	------------------------	-----------------------------	---------------------------------------

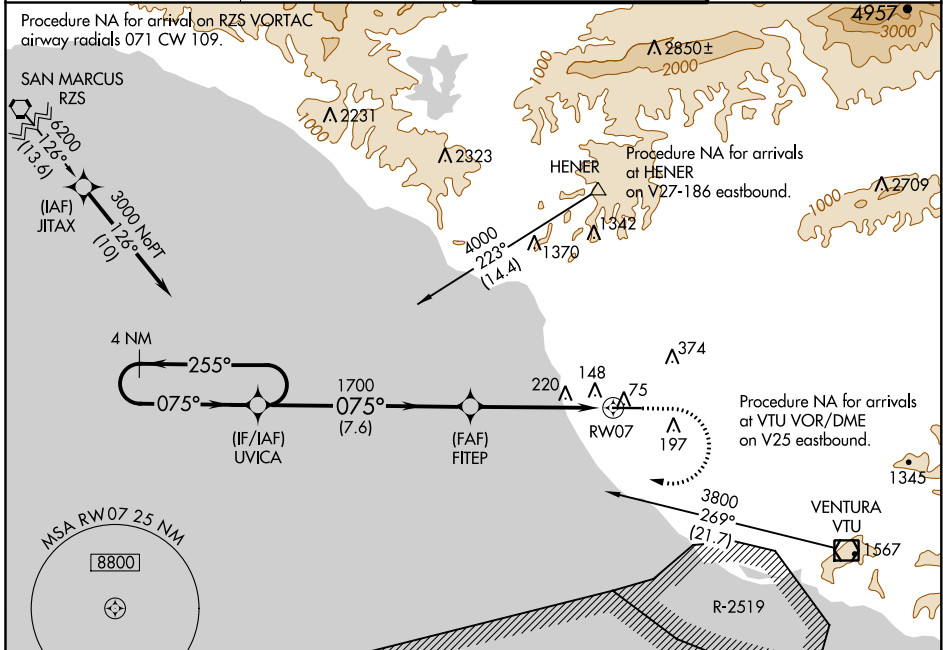
# RNAV (GPS) RWY 7

OXNARD (OXR)

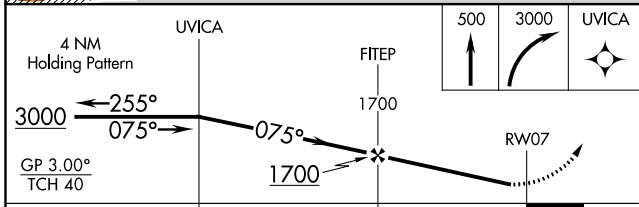
**⚠** Baro-VNAV NA when using Camarillo altimeter setting. For uncompensated Baro-VNAV systems, LNAV/VNAV NA below -15°C (5°F) or above 43°C (109°F). DME/DME RNP -0.3 NA. When local altimeter setting not received, use Camarillo altimeter setting and increase all DA 18 feet and all MDA 20 feet, increase Circling Cat D visibility ¼ mile.

**MISSED APPROACH:** Climb to 500, then climbing right turn to 3000 direct UVICA and hold.

ATIS <b>118.05</b>	POINT MUGU APP CON* <b>124.7 335.5</b>	OXNARD TOWER* <b>134.95 (CTAF) 257.8</b>	GND CON <b>121.9</b>
-----------------------	---	---	-------------------------

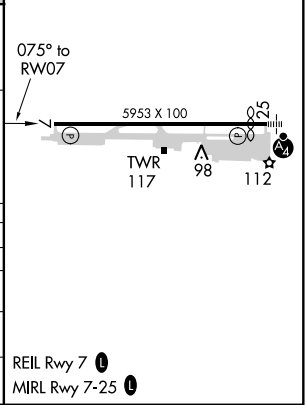


VTU VOR/DME to UVICA terminal route not authorized when W-289 active.



ELEV 45	<b>D</b> TDZE 37
---------	------------------

CATEGORY	A	B	C	D
LPV DA	287-1		250 (300-1)	
LNAV/VNAV DA	319-1		282 (300-1)	
LNAV MDA	480-1	443 (500-1)	480-1 $\frac{3}{8}$	443 (500-1 $\frac{3}{8}$ )
CIRCLING	500-1	455 (500-1)	500-1 $\frac{1}{2}$ 455 (500-1 $\frac{1}{2}$ )	700-2 655 (700-2)



SW-3, 10 SEP 2020 to 08 OCT 2020

SW-3, 10 SEP 2020 to 08 OCT 2020