


WAAS CH <b>86299</b> <b>W25A</b>	APP CRS <b>256°</b>	Rwy Idg <b>5500</b> TDZE <b>44</b> Apt Elev <b>45</b>
----------------------------------------	------------------------	-------------------------------------------------------------

# RNAV (GPS) RWY 25

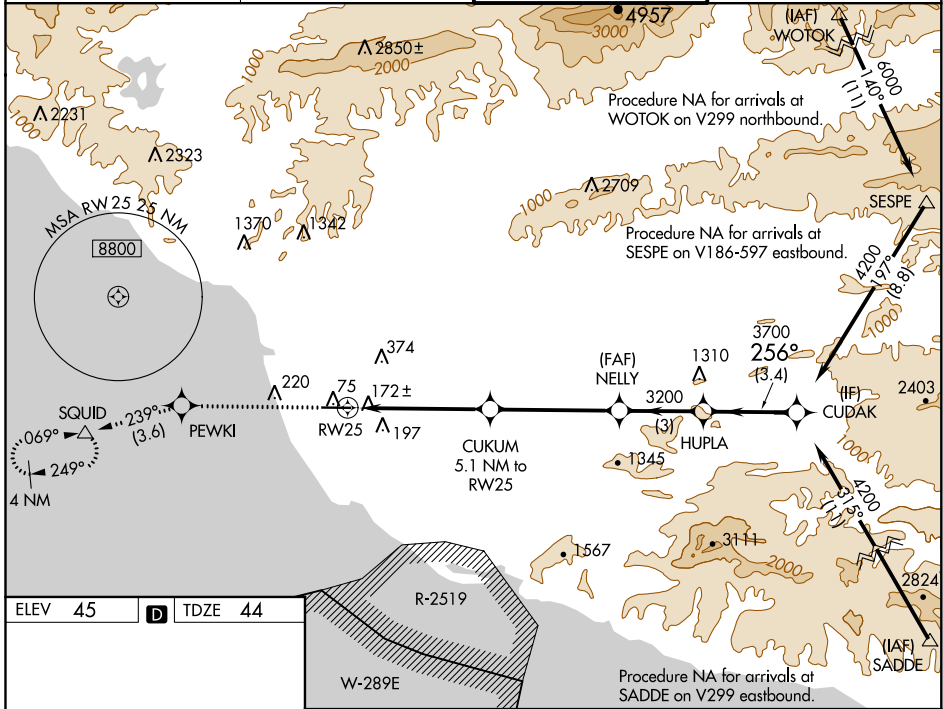
OXNARD (OXR)

**⚠** Inoperative table does not apply. Baro-VNAV NA when using Camarillo altimeter setting. For uncompensated Baro-VNAV systems, LNAV/VNAV NA below -15°C (5°F) or above 43°C (109°F). DME/DME RNP -0.3 NA. When local altimeter setting not received, use Camarillo altimeter setting and increase all DA 18 feet, all MDA 20 feet, and Circling Cat D visibility ¼ mile. Helicopter visibility reduction below ¾ SM NA.


**MALSF** 


**MISSED APPROACH:** Climb to 2000 direct PEWKI and on track 239° to SQUID and hold.

<b>ATIS</b> <b>118.05</b>	<b>POINT MUGU APP CON*</b> <b>124.7 335.5</b>	<b>OXNARD TOWER*</b> <b>134.95 (CTAF) 257.8</b>	<b>GND CON</b> <b>121.9</b>
------------------------------	--------------------------------------------------	----------------------------------------------------	--------------------------------



ELEV 45	<b>D</b>	TDZE 44
---------	----------	---------

REIL Rwy 7 

MIRL Rwy 7-25 

2000	PEWKI	tr 239°	SQUID	NELY	HUPLA	CUDAK
			CUKUM 5.1 NM to RWY 25	3200	3700	4200
			1720*	3200	3700	GP 3.00° TCH 58
			5.1 NM	4.6 NM	3 NM	3.4 NM

CATEGORY	A	B	C	D
LPV DA		294-1	250 (300-1)	
LNAV/VNAV DA		333-1	289 (300-1)	
LNAV MDA	520-1	476 (500-1)	520-1 $\frac{3}{8}$	476 (500-1 $\frac{3}{8}$ )
CIRCLING	520-1	475 (500-1)	520-1 $\frac{1}{2}$	700-2
			475 (500-1 $\frac{1}{2}$ )	655 (700-2)

SW-3, 10 SEP 2020 to 08 OCT 2020

SW-3, 10 SEP 2020 to 08 OCT 2020