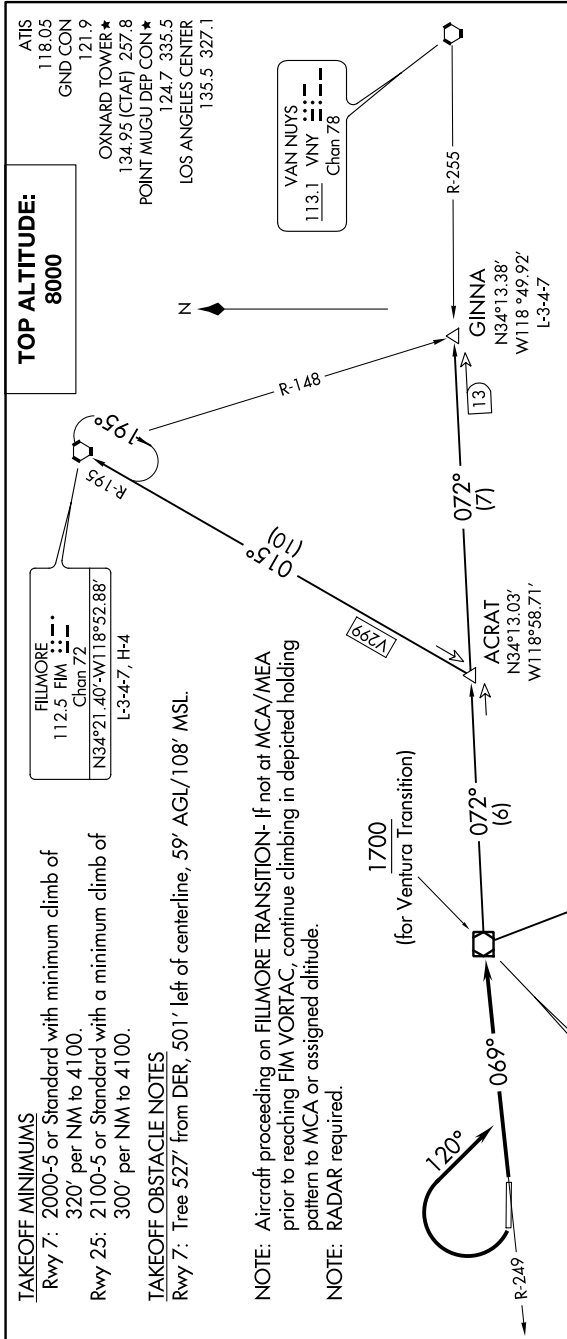


CAMARILLO SIX DEPARTURE

SW-3, 10 SEP 2020 to 08 OCT 2020



TAKEOFF MINIMUMS

- Rwy 7: 2000-5 or Standard with minimum climb of 320' per NM to 4100.
- Rwy 25: 2100-5 or Standard with a minimum climb of 300' per NM to 4100.

TAKEOFF OBSTACLE NOTES

Rwy 7: Tree 527' from DER, 501' left of centerline, 59' AGL/108' MSL.

NOTE: Aircraft proceeding on FILLMORE TRANSITION- If not at MCA/MEA prior to reaching FIM VORTAC, continue climbing in depicted holding pattern to MCA or assigned altitude.

NOTE: RADAR required.

TOP ALTITUDE:

8000

FILLMORE
112.5 FIM
Chan 7.2
N34°21.40'-W118°52.88'
L-3-4-7, H-4

VAN NUYS
113.1 VNY
Chan 78

- ATIS 118.05
- GND CON 121.9
- OXNARD TOWER * 134.95 (CTAF) 257.8
- POINT MUGU DEP CON * 124.7 335.5
- LOS ANGELES CENTER 135.5 327.1

DEPARTURE ROUTE DESCRIPTION

TAKEOFF RUNWAY 7: Climb to 8000 (or assigned altitude) on CMA R-249 to CMA VOR/DME, thence. . . .

TAKEOFF RUNWAY 25: Climbing right turn to 8000 (or assigned altitude) on heading 120° to intercept CMA R-249 to CMA VOR/DME, thence. . . . on (assigned route) or (transition).

FILLMORE TRANSITION (CMA6.FIM): From over CMA VOR/DME via CMA R-072 to ACRAT INT then via FIM R-195 to FIM VORTAC.

GINNA TRANSITION (CMA6.GINNA): From over CMA VOR/DME via CMA R-072 to GINNA INT.

VENTURA TRANSITION (CMA6.VTU): From over CMA VOR/DME via VTU R-324 to VTU VOR/DME.

CAMARILLO SIX DEPARTURE

SW-3, 10 SEP 2020 to 08 OCT 2020

NOTE: Chart not to scale.