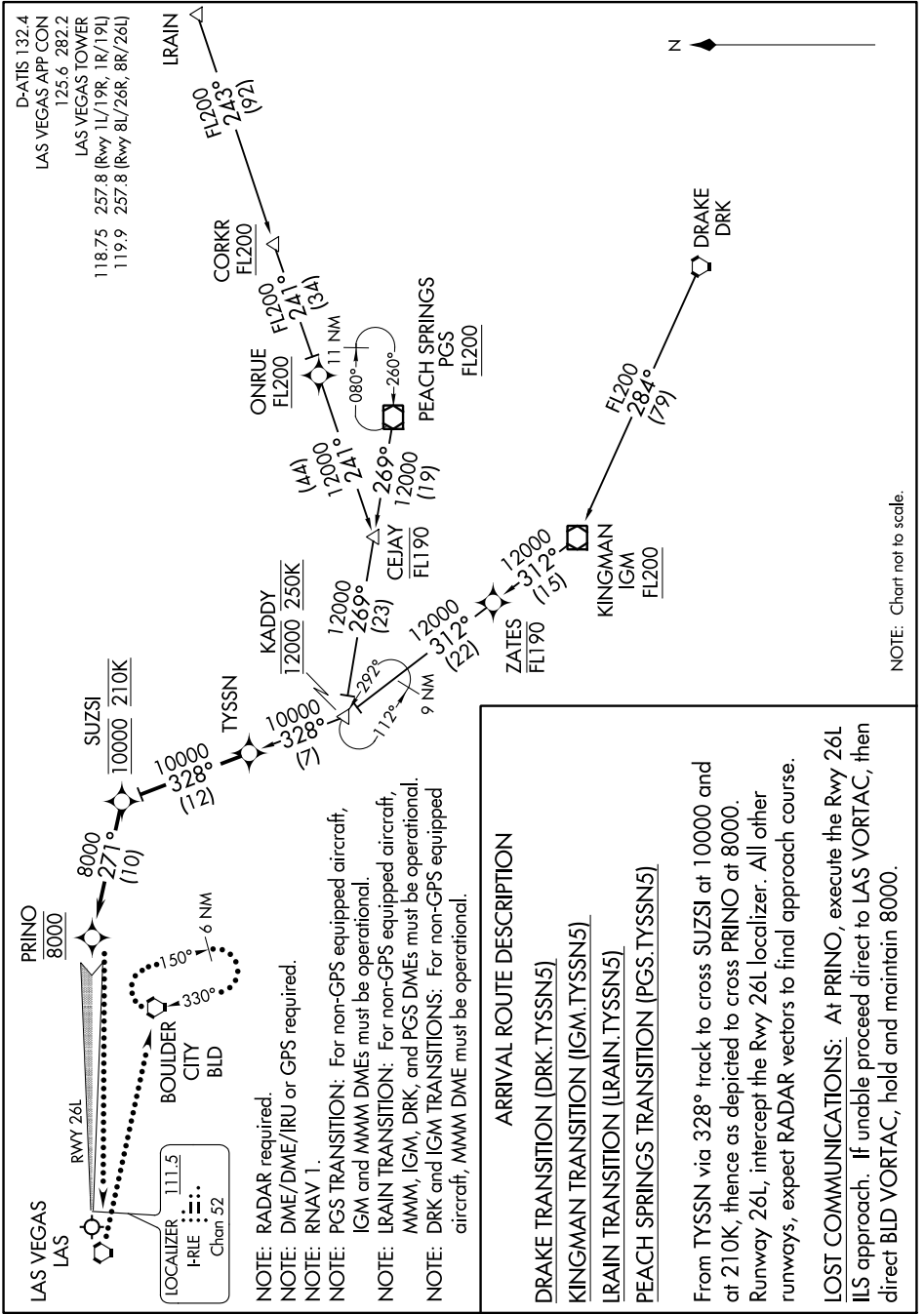


# TYSSN FIVE ARRIVAL (RNAV)

AL-662 (FAA)

MC CARRAN INTL (LAS)  
LAS VEGAS, NEVADA

SW-4, 10 SEP 2020 to 08 OCT 2020



NOTE: Chart not to scale.

**ARRIVAL ROUTE DESCRIPTION**

DRAKE TRANSITION (DRK.TYSSN5)

KINGMAN TRANSITION (IGM.TYSSN5)

LRAIN TRANSITION (LRAIN.TYSSN5)

PEACH SPRINGS TRANSITION (PGS.TYSSN5)

From TYSSN via 328° track to cross SUZSI at 10000 and at 210K, thence as depicted to cross PRINO at 8000. Runway 26L, intercept the Rwy 26L localizer. All other runways, expect RADAR vectors to final approach course.

**LOST COMMUNICATIONS:** At PRINO, execute the Rwy 26L ILS approach. If unable proceed direct to LAS VORTAC, then direct BLD VORTAC, hold and maintain 8000.

SW-4, 10 SEP 2020 to 08 OCT 2020

# TYSSN FIVE ARRIVAL (RNAV)