

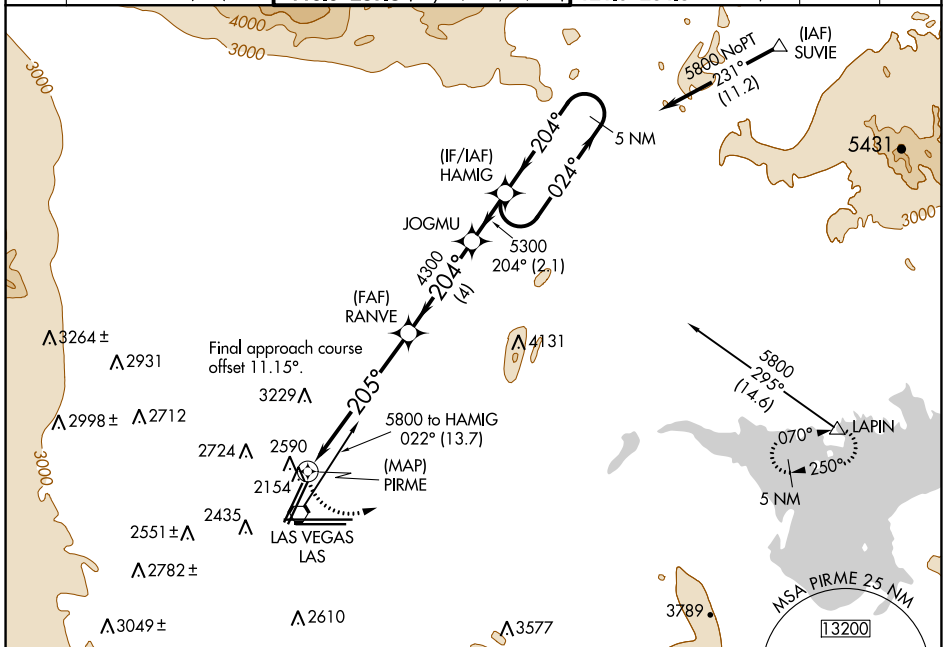
WAAS CH <b>50142</b> <b>W19B</b>	APP CRS <b>205°</b>	Rwy Idg TDZE Apt Elev	<b>8400</b> <b>2117</b> <b>2181</b>
--	------------------------	-----------------------------	---

# RNAV (GPS) RWY 19R

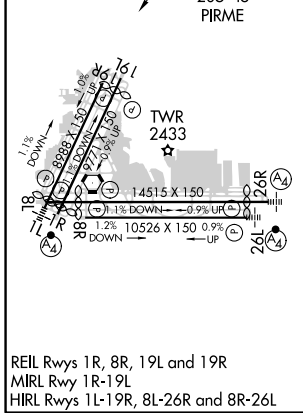
MC CARRAN INTL (LAS)

<b>▽</b> <b>▲</b>	Rwy 19R helicopter visibility reduction below 3/4 SM NA. DME/DME RNP- 0.3 NA.	MISSED APPROACH: Climbing left turn to 6000 direct LAPIN and hold.
----------------------	--	--

D-ATIS <b>132.4</b>	LAS VEGAS APP CON <b>125.025 379.15</b> (West) <b>125.6 282.2</b> (East)	LAS VEGAS TOWER <b>118.75 257.8</b> (Rwy 1L/19R, 1R/19L) <b>119.9 257.8</b> (Rwy 8L/26R, 8R/26L)	GND CON <b>121.1 270.8</b> E of 1R/19L <b>121.9 254.3</b> W of 1R/19L	CLNC DEL <b>118.0</b>	CPDLC
------------------------	--	--	---	--------------------------	-------



ELEV 2181	<b>D</b>	TDZE 2117
-----------	----------	-----------



6000	LAPIN	VGSI and descent angles not coincident (VGSI Angle 3.00/TCH 80).	HAMIG	5 NM Holding Pattern
	PIRME	1.2 NM to PIRME	RANVE	JOGMU
		3.06° TCH 60	4300	5300
		205°	204°	024°
				5800

CATEGORY	A	B	C	D
LP MDA	2700-1	583 (600-1)	2700-1 3/4	583 (600-1 3/4)
LNAV MDA	2880-1 763 (800-1)	2880-1 1/4 763 (800-1 1/4)	2880-2 1/2	763 (800-2 1/2)
<b>C</b> CIRCLING	3020-1 1/4 839 (900-1 1/4)	3040-1 1/4 859 (900-1 1/4)	3100-2 3/4 919 (1000-2 3/4)	3540-3 1359 (1400-3)

SW-4, 10 SEP 2020 to 08 OCT 2020

SW-4, 10 SEP 2020 to 08 OCT 2020