

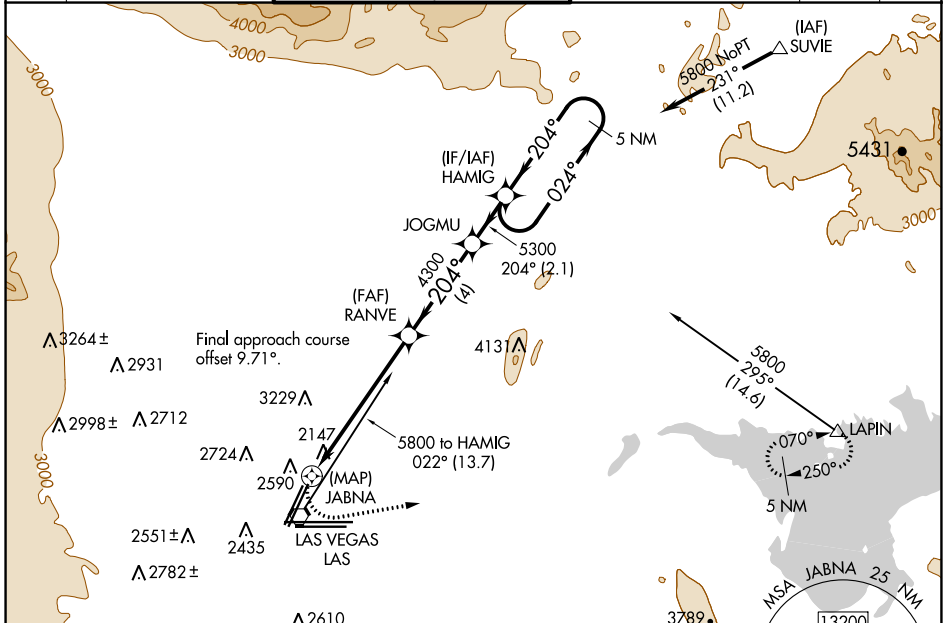
RNAV (GPS) RWY 19L

MC CARRAN INTL (LAS)

WAAS CH 45542 W19A	APP CRS 204°	Rwy Idg TDZE Apt Elev	8803 2112 2181
---------------------------------	------------------------	-----------------------------	---

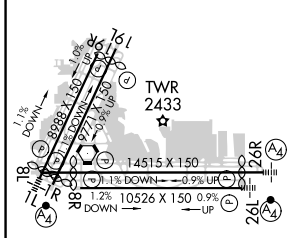
▽ ▲	DME/DME RNP-0.3 NA.	MISSED APPROACH: Climbing left turn to 6000 direct LAPIN and hold.
----------------------	---------------------	--

D-ATIS 132.4	LAS VEGAS APP CON 125.025 379.15 (West) 125.6 282.2 (East)	LAS VEGAS TOWER 118.75 257.8 (Rwy 1L/19R, 1R/19L) 119.9 257.8 (Rwy 8L/26R, 8R/26L)	GND CON 121.1 270.8 E of 1R/19L 121.9 254.3 W of 1R/19L	CLNC DEL 118.0	CPDLC
------------------------	--	--	---	--------------------------	-------



ELEV 2181	D	TDZE 2112
-----------	----------	-----------

204° to JABNA



6000	LAPIN	VGSIs and descent angles not coincident (VGSi Angle 3.00/TCH 75).		HAMIG	5 NM Holding Pattern
1 NM to JABNA		RANVE	JOGMU	5800	
JABNA		4300	5300	← 204°	
0.5	1	5.1	4	2.1	

CATEGORY	A	B	C	D
LP MDA	2640-1	528 (500-1)	2640-1½	528 (500-1½)
LNAV MDA	2760-1	648 (600-1)	2760-1¾	648 (600-1¾)
C CIRCLING	3020-1¼ 839 (900-1¼)	3040-1¼ 859 (900-1¼)	3100-2¾ 919 (1000-2¾)	3540-3 1359 (1400-3)

LAS VEGAS, NEVADA
Amdt 2 17AUG17

36°05'N-115°09'W

MC CARRAN INTL (LAS)

RNAV (GPS) RWY 19L

SW-4, 10 SEP 2020 to 08 OCT 2020

SW-4, 10 SEP 2020 to 08 OCT 2020