

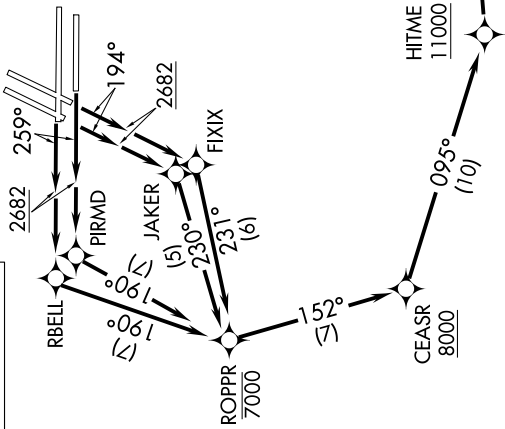
# PRFUM FOUR DEPARTURE (RNAV)

AL-662 (FAA)

MC CARRAN INTL (LAS)  
LAS VEGAS, NEVADA

SW-4, 10 SEP 2020 to 08 OCT 2020

**TOP ALTITUDE:**  
FL190



D-ATIS 132.4  
 CLNCDEL 118.0  
 CPDLC  
 GND CON  
 121.1 270.8 E of 1R/19L  
 121.9 254.3 W of 1R/19L  
 LAS VEGAS TOWER  
 118.75 257.8 (Rwys 1L/19R, 1R/19L)  
 119.9 257.8 (Rwys 8L/26R, 8R/26L)  
 LAS VEGAS DEP CON  
 125.9 307.25

NOTE: DME/DME/IRU or GPS required.  
 NOTE: RNAV 1.  
 NOTE: For non-GPS equipped aircraft: LAS DME must be operational.  
 NOTE: RADAR required.



### TAKEOFF MINIMUMS

Rwys 1L/R, 8L/R: NA- air traffic.  
 Rwys 19L/R: Standard with minimum climb of 295' per NM to 5200.  
 Rwy 26L/R: Standard with minimum climb of 275' per NM to 5600.

(NARRATIVE ON FOLLOWING PAGE)

NOTE: Chart not to scale.

# PRFUM FOUR DEPARTURE (RNAV)

SW-4, 10 SEP 2020 to 08 OCT 2020