

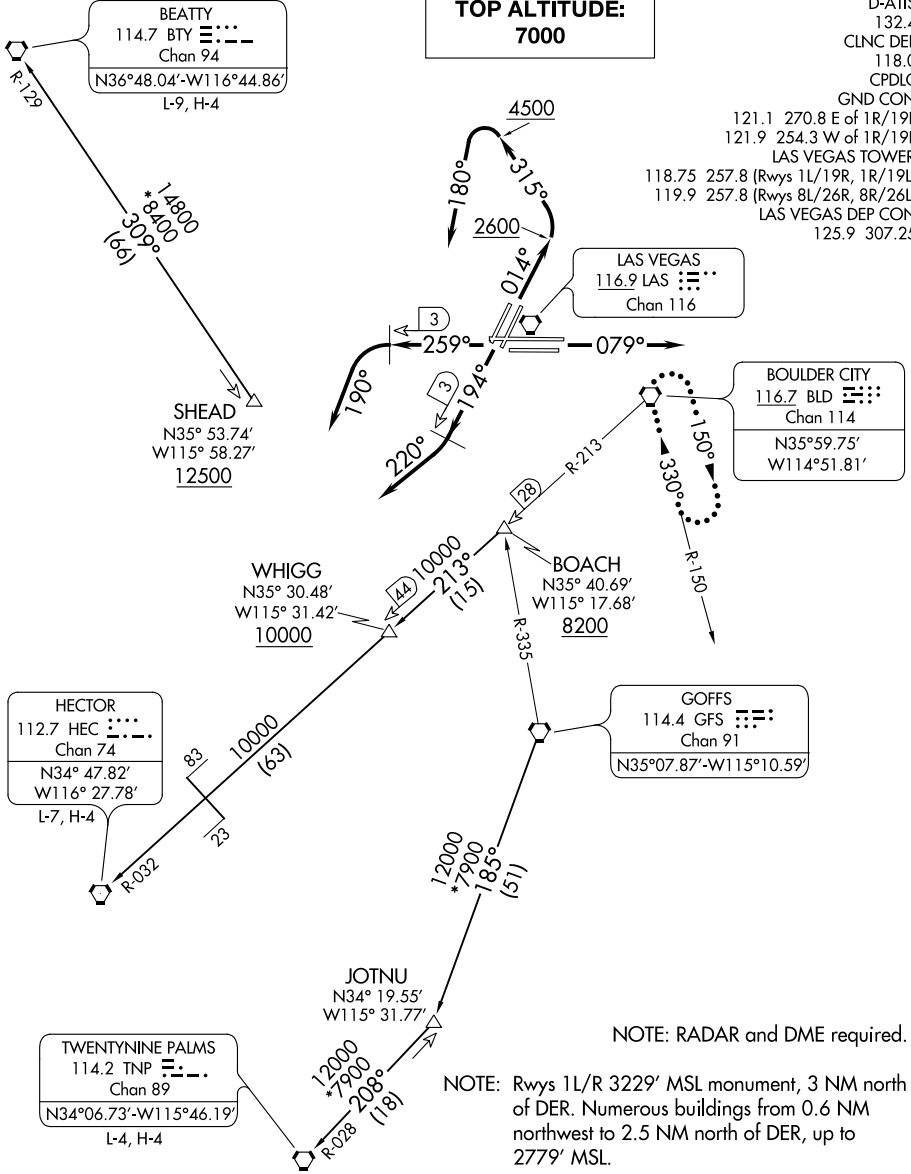
MCCARRAN FIVE DEPARTURE

AL-662 (FAA)

MC CARRAN INTL (LAS)
LAS VEGAS, NEVADA

**TOP ALTITUDE:
7000**

D-ATIS
132.4
CLNC DEL
118.0
CPDLC
GND CON
121.1 270.8 E of 1R/19L
121.9 254.3 W of 1R/19L
LAS VEGAS TOWER
118.75 257.8 (Rwys 1L/19R, 1R/19L)
119.9 257.8 (Rwys 8L/26R, 8R/26L)
LAS VEGAS DEP CON
125.9 307.25



HECTOR
112.7 HEC
Chan 74
N34° 47.82'
W116° 27.78'
L-7, H-4

TWENTYNINE PALMS
114.2 TNP
Chan 89
N34°06.73'-W115°46.19'
L-4, H-4

BOULDER CITY
116.7 BLD
Chan 114
N35°59.75'
W114°51.81'

GOFFS
114.4 GFS
Chan 91
N35°07.87'-W115°10.59'

TAKEOFF MINIMUMS

Rwys 1L/R: Standard with minimum climb of 529' per NM to 7000.
Rwys 8L/R: Standard with minimum climb of 440' per NM to 7000.
Rwys 19L/R, 26L/R: Standard with minimum climb of 360' per NM to 7000.

NOTE: Radars and DME required.
NOTE: Rwys 1L/R 3229' MSL monument, 3 NM north of DER. Numerous buildings from 0.6 NM northwest to 2.5 NM north of DER, up to 2779' MSL.

(NARRATIVE ON FOLLOWING PAGE)

NOTE: Chart not to scale.

MCCARRAN FIVE DEPARTURE

SW-4, 10 SEP 2020 to 08 OCT 2020

SW-4, 10 SEP 2020 to 08 OCT 2020