

APP CRS	Rwy Idg	<b>2864</b>
<b>172°</b>	TDZE	<b>6</b>
	Apt Elev	<b>7</b>

# RNAV (GPS) RWY 18

ALBERT WHITTED (SPG)

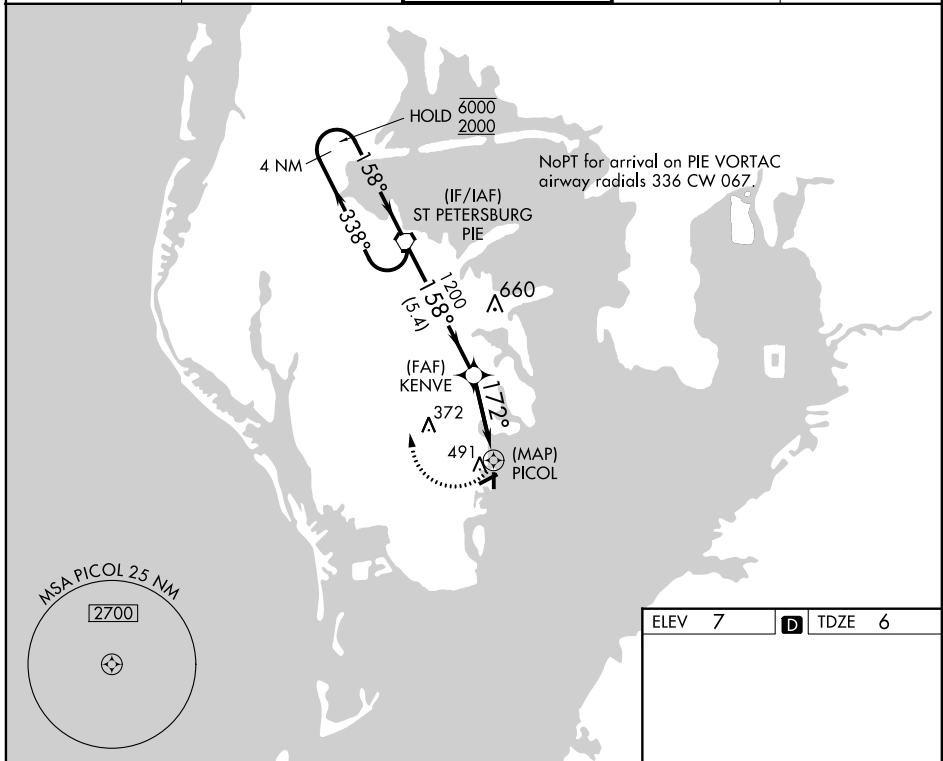
RNP APCH.

**▼** Circling Rwy 36 NA at night. Rwy 18 helicopter visibility reduction below 3/4 SM NA.

**▲**

MISSED APPROACH: Climbing right turn to 2000 direct PIE VORTAC and hold.

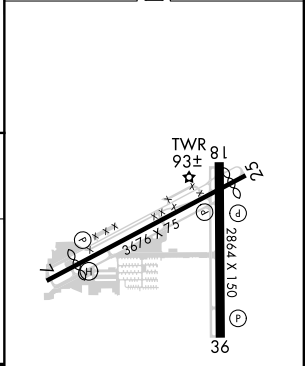
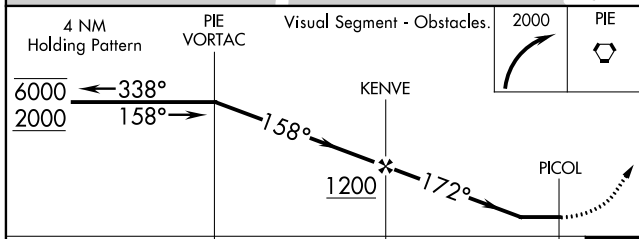
ASOS <b>118.875</b>	TAMPA APP CON <b>119.65 316.05 (EAST)</b> <b>125.3 316.05 (WEST)</b>	ALBERT WHITTED TOWER ★ <b>127.4 (CTAF) 257.6</b>	GND CON <b>121.8</b>	UNICOM <b>122.95</b>
------------------------	--	---	-------------------------	-------------------------



SE-3, 10 SEP 2020 to 08 OCT 2020

SE-3, 10 SEP 2020 to 08 OCT 2020

ELEV	<b>7</b>	<b>D</b>	TDZE	<b>6</b>
------	----------	----------	------	----------



CATEGORY	A	B	C	D
LNVA MDA	800-1 794 (800-1)	800-1¼ 794 (800-1¼)		NA
<b>C</b> CIRCLING	860-1¼	853 (900-1¼)		NA

MIRL Rwy 7-25 and 18-36 **0**

REIL Rwy 7, 18, 25 and 36 **0**