

WAAS CH 87116 W20A	APP CRS 205°	Rwy Idg TDZE Apt Elev	5600 568 571
--	------------------------	-----------------------------	---

RNAV (GPS) RWY 20

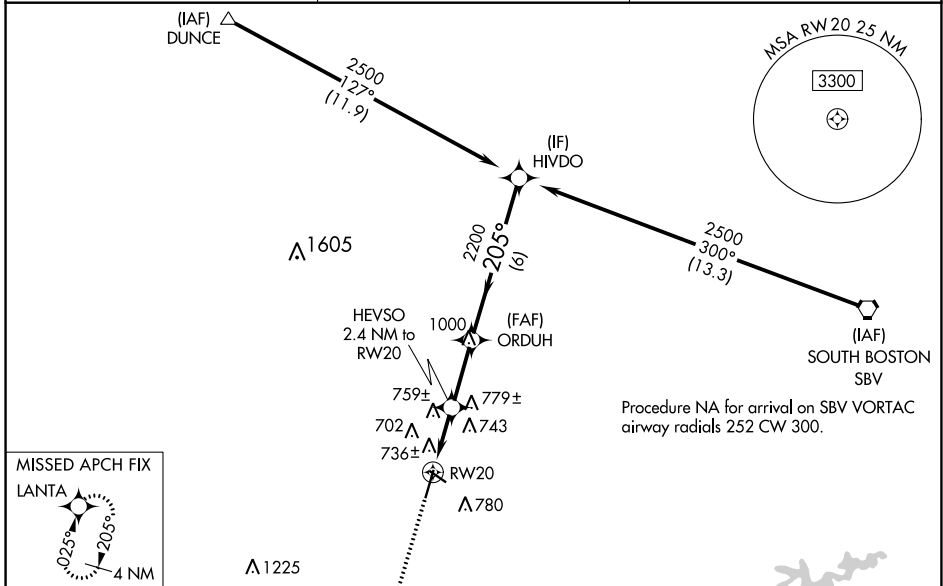
DANVILLE RGNL (DAN)

RNP APCH.

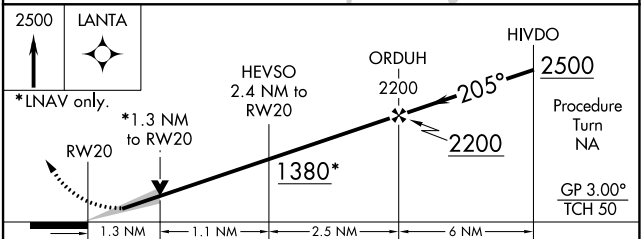
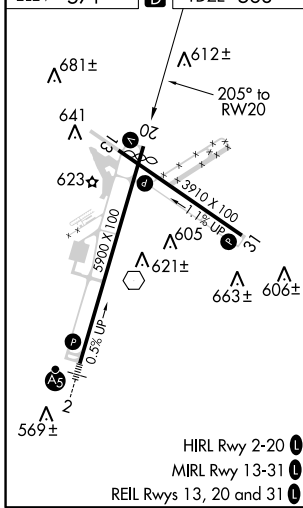
Baro-VNAV NA when using Roxboro, NC altimeter setting. For uncompensated Baro-VNAV systems, LNAV/VNAV NA below -16°C or above 47°C. When local altimeter setting not received, use Roxboro, NC altimeter setting and increase all DA 62 feet and all MDA 80 feet; increase LPV and LNAV/VNAV all Cats visibility ¼ mile and LNAV Cats C and D ¼ mile. VDP NA with Roxboro, NC altimeter setting.

MISSED APPROACH: Climb to 2500 direct LANTA and hold.

ASOS 128.125	WASHINGTON CENTER 124.05 307.0	UNICOM 123.05 (CTAF) 0
------------------------	--	----------------------------------



ELEV 571	D	TDZE 568
----------	----------	----------



CATEGORY	A	B	C	D
LPV DA	768-1 200 (200-1)			
LNAV/VNAV DA	1026-1½ 458 (500-1½)			
LNAV MDA	1020-1	452 (500-1)	1020-1¼ 452 (500-1¼)	1020-1½ 452 (500-1½)

NE-3, 10 SEP 2020 to 08 OCT 2020

NE-3, 10 SEP 2020 to 08 OCT 2020