

ORLANDO APP CON  
128.375 338.2  
MCO D-ATIS ARR  
121.25

LEESBURG INTL

ORLANDO SANFORD INTL

POPEY  
KMCO Landing South:  
Expect RADAR vectors  
after POPEY.

NOTE: RADAR required.  
NOTE: DME/DME/IRU or GPS required.  
NOTE: RNAV 1.  
NOTE: Turbojet/Turboprop aircraft only.

ORLANDO INTL

KISSIMMEE GATEWAY

NOBBS  
Landing KISM, KORL, KSFB, KLEE:  
Expect RADAR vectors after NOBBS.  
KMCO Landing North:  
Expect RADAR vectors after NOBBS.

BAIRN  
KMCO Landing South:  
Expect 11000  
KMCO Landing North:  
Expect 8000  
Landing KISM:  
Expect 8000

TREASURE TRV

ARRIVAL ROUTE DESCRIPTION

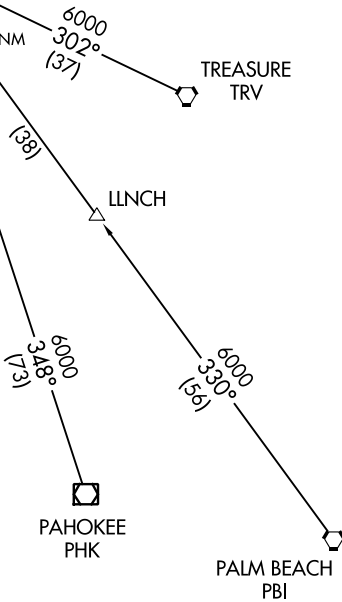
PAHOKEE TRANSITION (PHK.BAIRN4):  
PALM BEACH TRANSITION (PBI.BAIRN4):  
TREASURE TRANSITION (TRV.BAIRN4):

From over BAIRN on track 350° to NOBBS, then on track 006° to MICKX, then on track 006° to RAMEZ, then on track 006° to POPEY, then on track 275°.  
Expect RADAR vectors.

LOST COMMUNICATIONS:

KMCO LANDING NORTH: Continue track to NOBBS, then proceed direct to SERAY, turn right to intercept Rwy 35R final approach course, conduct approach.

KMCO LANDING SOUTH: Continue track to POPEY, then turn left to intercept Rwy 17L final approach course, conduct approach.



NOTE: Chart not to scale.

SE-3, 10 SEP 2020 to 08 OCT 2020

SE-3, 10 SEP 2020 to 08 OCT 2020