

CAMP SPRINGS, MARYLAND

TACAN RWY 19R

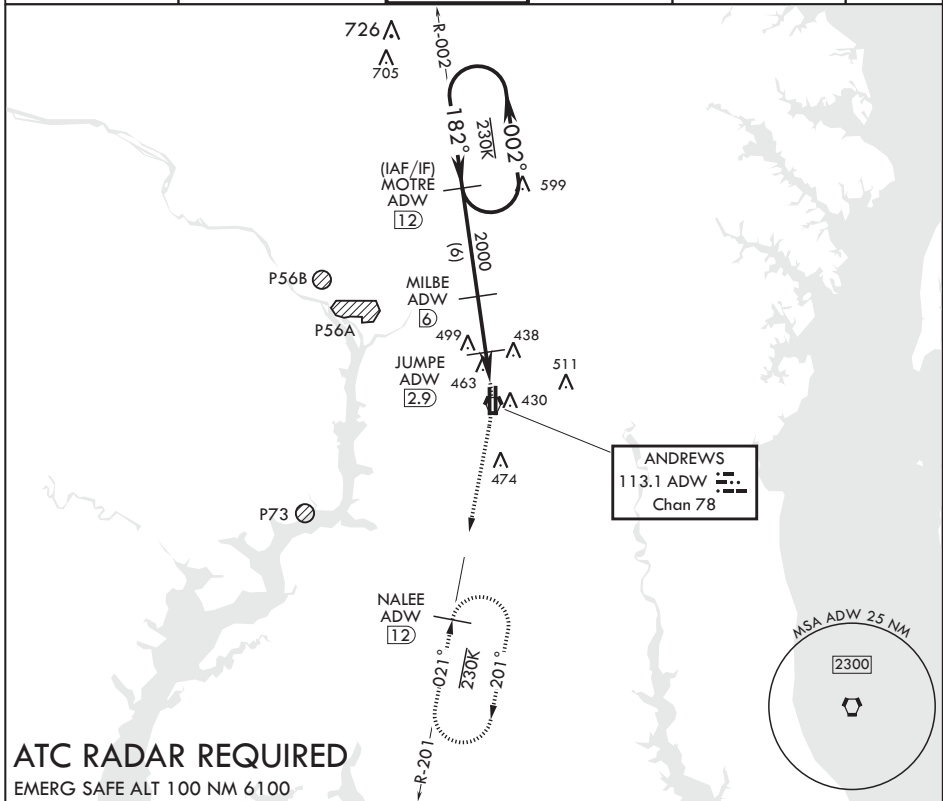
VORTAC ADW 113.1 Chan 78	APCH CRS 182°	Rwy Idg TDZE Arpt Elev	9318 274 280
--------------------------------	------------------	------------------------------	--------------------

AL-561 (USAF)

JOINT BASE ANDREWS (KADW)

<p>⚠ * When ALS inop, increase CAT AB RVR to 55 and vis to 1 mile, CAT CDE vis to 1 3/8 miles. ** Circling not authorized W of Rwy 1L-19R.</p>	<p>ALS-F-2 </p>	<p>MISSED APPROACH: Climbing to 2500, intercept ADW VORTAC R-201 to NALEE and hold.</p>
--	---	---

ATIS 133.675 251.05	POTOMAC APP CON 128.0 335.5	TOWER 118.4 349.0	GND CON 121.8 275.8	CLNC DEL 127.55 285.475	CPDLC
------------------------	--------------------------------	----------------------	------------------------	----------------------------	-------



ATC RADAR REQUIRED

EMERG SAFE ALT 100 NM 6100

<p>2500 ← 002°</p> <p>182° →</p> <p>MILBE (6)</p> <p>JUMPE (2.9)</p> <p>VORTAC</p> <p>2000</p> <p>960</p> <p>2.2</p> <p>BIMKE (1.2)</p> <p>3.1 NM</p> <p>1.7 NM</p> <p>.2</p> <p>↑ MILBE to MAP</p> <p>↑ 3.11° ≥ TCH 71</p>	<p>2500 ADW R-201</p> <p>NALEE ADW (12)</p>	<p>ELEV 280</p> <p>182° 5NM from FAF</p> <p>BCN 483</p> <p>TWR 435</p> <p>76L (A1)</p> <p>86L (P)</p> <p>9318 x 200</p> <p>9756 x 150</p> <p>0.3% DOWN</p> <p>11L (P)</p> <p>1R (A1)</p>	<p>TDZE 274</p>
---	---	--	-----------------

CATEGORY	A	B	C	D	E
S-19R*	740/24 466 (500-½)		740/50 466 (500-1)		
CIRCLING**	780-1 501 (600-1)		780-1½ 501 (600-1½)	840-2 561 (600-2)	

CAMP SPRINGS, MARYLAND

38°49'N - 76°52'W

JOINT BASE ANDREWS (KADW)

Amdt 1 02MAR17

TACAN RWY 19R

NE-3, 10 SEP 2020 to 08 OCT 2020

NE-3, 10 SEP 2020 to 08 OCT 2020