

CAMP SPRINGS, MARYLAND

RNAV (GPS) RWY 1L

WAAS CH 52205 W01A	APCH CRS 010°	Rwy ldg TDZE Arpt Elev	9318 261 280
--------------------------	------------------	------------------------------	--------------------

AL-561 (USAF)

JOINT BASE ANDREWS (KADW)

▼ * When ALS inop, increase RVR to 40, vis to 3/4. When TDZ/CL lights inop, increase RVR to 24.
 ** When ALS inop increase vis to 1 1/4 miles.
 *** When ALS inop increase CAT AB RVR to 55, vis to 1 mile; CAT CDE vis to 1 1/4 miles.

ALS-F-2 MISSED APPROACH: Climb to 2500 direct EGUDE and hold.

ATIS 133.675 251.05	POTOMAC APP CON 128.0 335.5	TOWER 118.4 349.0	GND CON 121.8 275.8	CLNC DEL 127.55 285.475	CPDLC
------------------------	--------------------------------	----------------------	------------------------	----------------------------	-------

**** Circling W of Rwy 1L-19R NA.

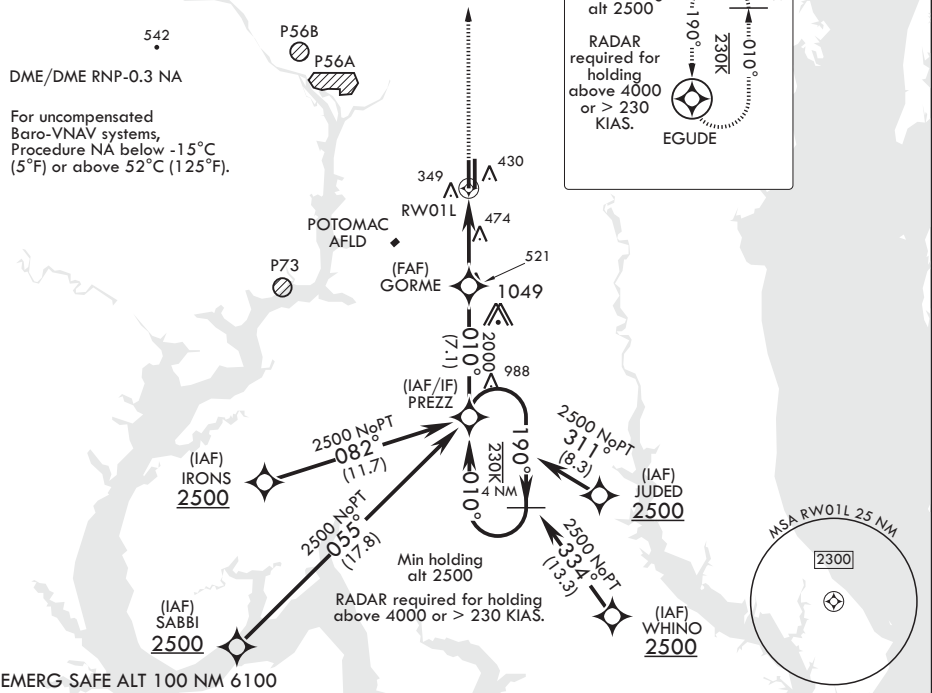
DME/DME RNP-0.3 NA

For uncompensated Baro-VNAV systems, Procedure NA below -15°C (5°F) or above 52°C (125°F).

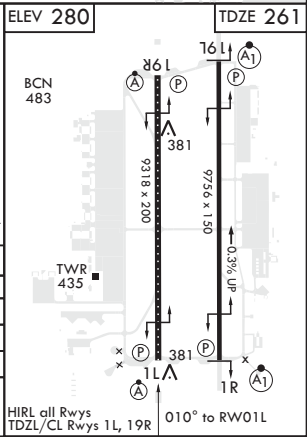
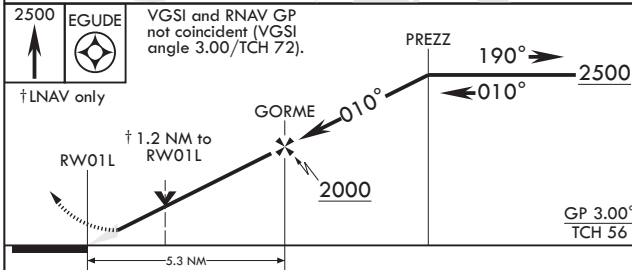
MISSED APPROACH

Min holding alt 2500

RADAR required for holding above 4000 or > 230 KIAS.



EMERG SAFE ALT 100 NM 6100



CATEGORY	A	B	C	D	E
LPV DA*	461/18	200	(200-1/2)		
LNAV/VNAV DA**	687/40	426	(500-3/4)		
LNAV MDA***	700/24 439 (500-1/2)	700/40	439 (500-3/4)		
CIRCLING****	780-1 500 (500-1)	780-1 1/2 500 (500-1/2)	840-2 560 (600-2)		

CAMP SPRINGS, MARYLAND

38°49'N - 76°52'W

JOINT BASE ANDREWS (KADW)

Amdt 2 15AUG19 TERPS

RNAV (GPS) RWY 1L

NE-3, 10 SEP 2020 to 08 OCT 2020

NE-3, 10 SEP 2020 to 08 OCT 2020