

CAMP SPRINGS, MARYLAND

# ILS or LOC RWY 1R

LOC I-VJM <b>110.5</b>	APCH CRS <b>010°</b>	Rwy Idg <b>9756</b>
		TDZE <b>265</b>
		Arprt Elev <b>280</b>

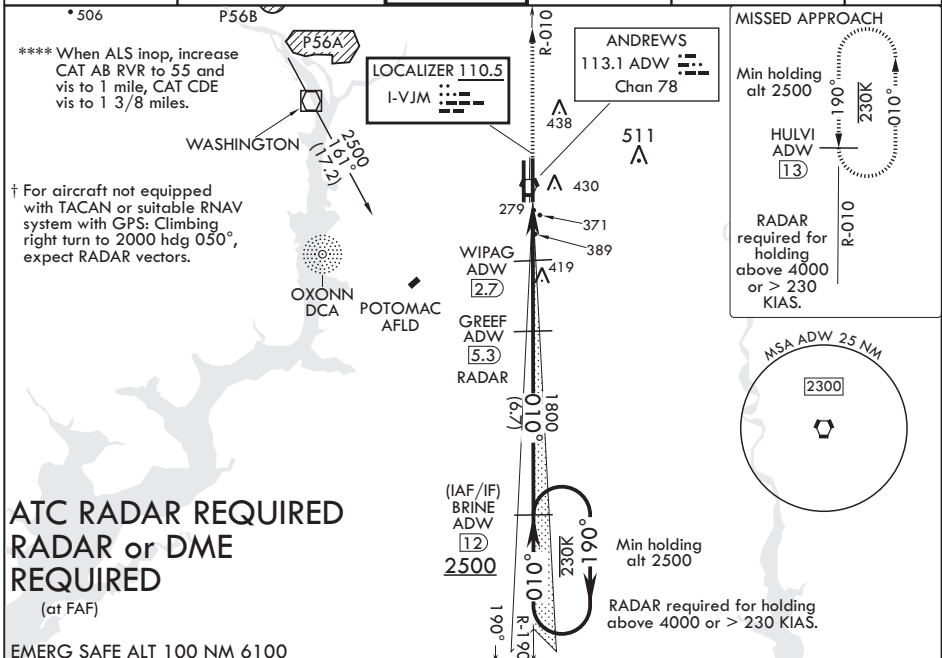
AL-561 (USAF)

JOINT BASE ANDREWS (KADW)

▼ \* When ALS inop, increase RVR to 40, vis to 3/4 mile. RVR 18 authorized with use of Flight Director System or Autopilot System or Heads-Up-Display to DA.  
 \*\* When ALS inop, increase RVR to 55, vis to 1 mile.  
 \*\*\* Circling not authorized W of Rwy 1L-19R.

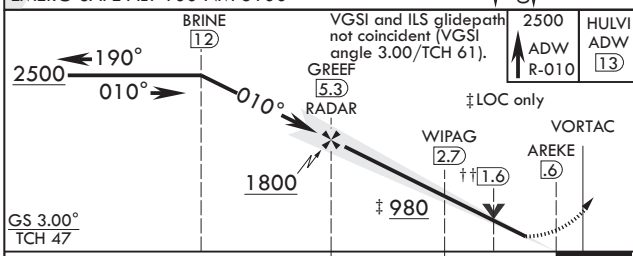
ALSF-1 † MISSED APPROACH: Climb to 2500 via ADW VORTAC R-010 to HULVI/ADW 13 DME and hold.

ATIS <b>133.675 251.05</b>	POTOMAC APP CON <b>128.0 335.5</b>	TOWER <b>118.4 349.0</b>	GND CON <b>121.8 275.8</b>	CLNC DEL <b>127.55 285.475</b>	CPDLC
-------------------------------	---------------------------------------	-----------------------------	-------------------------------	-----------------------------------	-------



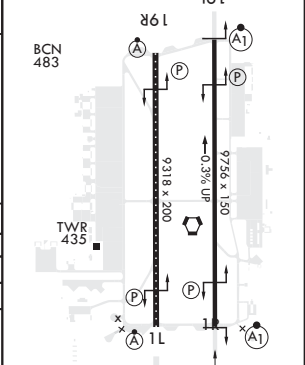
**ATC RADAR REQUIRED**  
**RADAR or DME**  
 (at FAF)

EMERG SAFE ALT 100 NM 6100



ELEV 280	TDZE 265
----------	----------

CATEGORY	A	B	C	D	E
S-ILS 1R*	465/24		200	(200-1/2)	
S-LOC 1R**	640/24	375 (400-1/2)	640/35	375	(400-3/8)
<b>C</b> CIRCLING***	780-1	500 (500-1)	780-1 1/2 500 (500-1 1/2)	840-2	560 (600-2)
NON-DME					
S-LOC 1R****	720/24	455 (500-1/2)	720/45	455	(500-7/8)
<b>C</b> CIRCLING***	780-1	500 (500-1)	780-1 1/2 500 (500-1 1/2)	840-2	560 (600-2)



FAF to MAP 4.7 NM					
Knots	60	90	120	150	180
Min:Sec	4:42	3:08	2:21	1:53	1:34

CAMP SPRINGS, MARYLAND

38°49'N - 76°52'W

JOINT BASE ANDREWS (KADW)

Orig 15AUG19

# ILS or LOC RWY 1R

NE-3, 10 SEP 2020 to 08 OCT 2020

NE-3, 10 SEP 2020 to 08 OCT 2020