

ILS RWY 19R (CAT III)

LOC I-MXK 111.5	APCH CRS 190°	Rwy ldg TDZE 274 Arprt Elev 280
---------------------------	-------------------------	--

AL-561 [USAF]

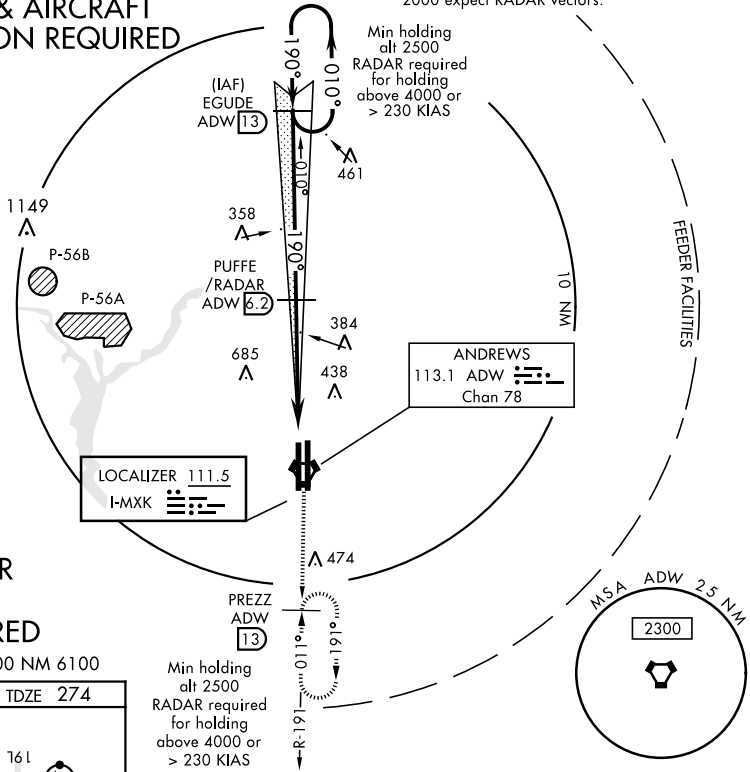
JOINT BASE ANDREWS (KADW)

	† MISSED APPROACH: Climbing to 2500, intercept ADW VORTAC R-191 to PREZZ and hold.

ATIS 133.675 251.05	POTOMAC APP CON 128.0 335.5	ANDREWS TOWER 118.4 349.0	GND CON 121.8 275.8	CLNC DEL 127.55 285.475	CPDLC
-------------------------------	---------------------------------------	-------------------------------------	-------------------------------	-----------------------------------	-------

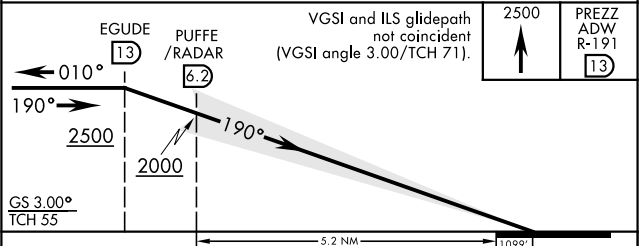
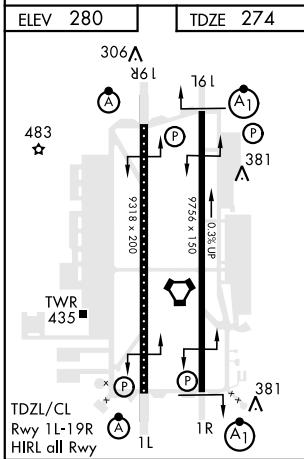
CATEGORY III ILS-SPECIAL AIRCREW & AIRCRAFT CERTIFICATION REQUIRED

† For aircraft not equipped with TACAN or suitable RNAV system with GPS: Fly hdg 190°, maintain 2000 expect RADAR vectors.



ATC RADAR or DME REQUIRED

EMERG SAFE ALT 100 NM 6100



CATEGORY	A	B	C	D	E
S-ILS 19R		CAT IIIa		RVR 07	
S-ILS 19R		CAT IIIb		RVR 06	
S-ILS 19R		CAT IIIc		NA	

ILS RWY 19R (CAT III)

NE-3, 10 SEP 2020 to 08 OCT 2020

NE-3, 10 SEP 2020 to 08 OCT 2020