

APP CRS <b>355°</b>	Rwy Idg <b>12250</b> TDZE <b>496</b> Apt Elev <b>542</b>
------------------------	--

# RNAV (RNP) Z RWY 35L

AUSTIN-BERGSTROM INTL (AUS)

**▼** For uncompensated Baro-VNAV systems, procedure NA below -6°C (22°F) or above 54°C (130°F). Simultaneous approach authorized. GPS required. For inop ALS, increase RNP 0.11 all Cats visibility to RVR 4500 and RNP 0.30 all Cats visibility to 1½ SM.

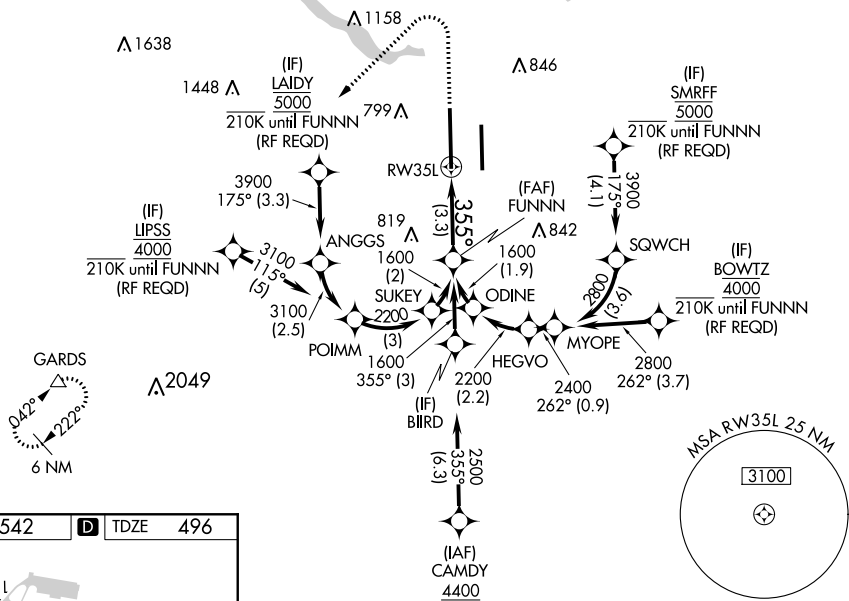
MALSR



**MISSED APPROACH:**  
Climb to 1700 then climbing left turn to 3500 direct GARDS and hold.

D-ATIS <b>124.4</b>	AUSTIN APP CON <b>127.225 317.65 (EAST)</b> <b>120.875 270.25 (SOUTH)</b> <b>119.0 370.85 (WEST)</b>	AUSTIN TOWER <b>121.0 281.5</b>	GND CON <b>121.9 348.6</b>	CLNC DEL <b>125.5 263.0</b>	CPDLC
------------------------	---	------------------------------------	-------------------------------	--------------------------------	-------

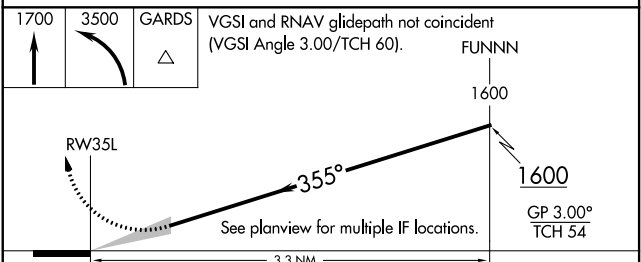
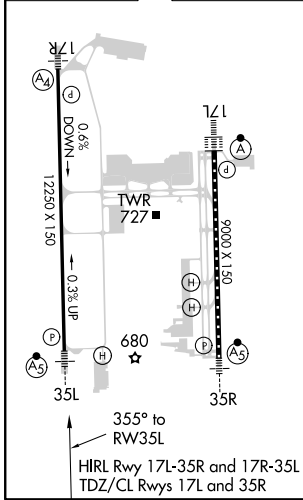
## RADAR REQUIRED



SC-3, 10 SEP 2020 to 08 OCT 2020

SC-3, 10 SEP 2020 to 08 OCT 2020

ELEV <b>542</b>	<b>D</b>	TDZE <b>496</b>
-----------------	----------	-----------------



CATEGORY	A	B	C	D
RNP 0.11 DA		765/24	269 (300-½)	
RNP 0.30 DA		952/60	456 (500-1¼)	

## AUTHORIZATION REQUIRED