

ABERDEEN, MARYLAND

RNAV (GPS) RWY 22

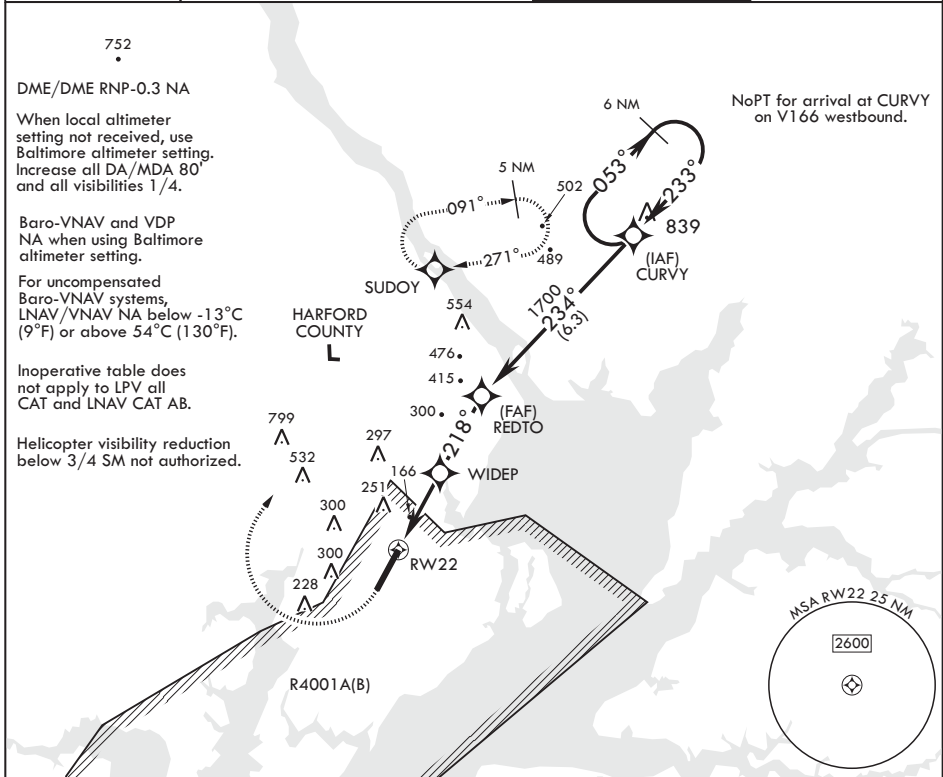
WAAS CH 70342 W22A	APCH CRS 218°	Rwy ldg 7998	TDZE 45
		Arpt Elev 45	

AL-555 (USA)

PHILLIPS AAF (ABERDEEN PROVING GROUND) (KAPG)

MISSED APPROACH: Climb to 500, then climbing right turn to 2000 direct SUDOY and hold.

ATIS* 124.425	POTOMAC APP CON/DEP CON 125.525 291.625	TOWER* 126.15 229.6	GND CON 121.9
------------------	--	------------------------	------------------



NE-3, 10 SEP 2020 to 08 OCT 2020

NE-3, 10 SEP 2020 to 08 OCT 2020

500	2000	SUDOY	VGSI and RNAV glidepath not coincident (VGSI angle 3.00/TCH 49).	CURVY	ELEV 45	218° to RWY 22	TDZE 45
<p>Visual segment - Obstacles</p> <p>*LNAV only</p> <p>RWY 22 *1.2 NM to RWY 22</p> <p>WIDEP *218° 900*</p> <p>REDTO *234° 1700</p> <p>CURVY *053° 2100</p> <p>GP 3.00° TCH 59</p>							
CATEGORY		A	B	C	D		
LPV DA		295-1	250	(300-1)			
LNAV/VNAV DA		480-1 ³ / ₈	435	(500-1 ³ / ₈)			
LNAV MDA		460-1	415	(500-1)			
CIRCLING		500-1 455 (500-1)	520-1 475 (500-1)	640-1 ¹ / ₂ 595 (600-1 ¹ / ₂)	880-2 ³ / ₄ 835 (900-2 ³ / ₄)	HIRL all Rwys REIL Rwy 22	

ABERDEEN, MARYLAND

39°28'N - 76°10'W PHILLIPS AAF (ABERDEEN PROVING GROUND) (KAPG)

Amdt 2B 10SEP20

RNAV (GPS) RWY 22