

POAKE TWO DEPARTURE

AL-548 (FAA)

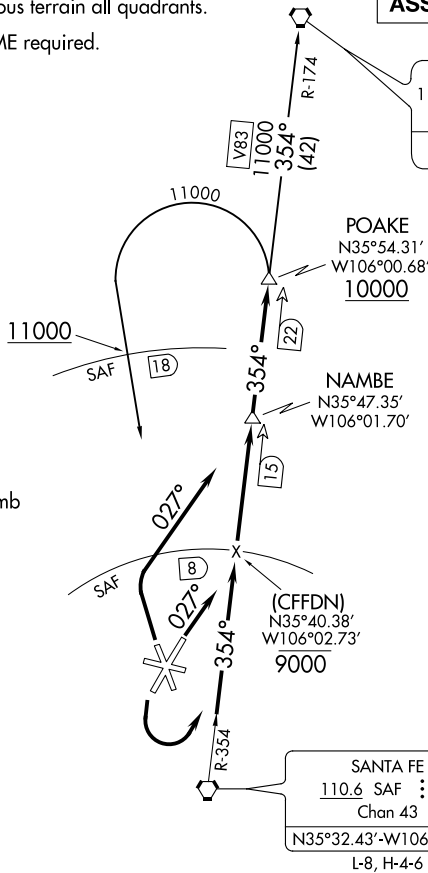
SANTA FE MUNI (SAF)
SANTA FE, NEW MEXICO

ATIS 128.55
GND CON
121.7
SANTA FE TOWER*
119.5 (CTAF) 239.3
ALBUQUERQUE CENTER
132.8 346.35

CAUTION:
Mountainous terrain all quadrants.
NOTE: DME required.

**TOP ALTITUDE:
ASSIGNED by ATC**

TAOS
117.6 TAS :
Chan 123
N36°36.53'
W105°54.38'
L-8



TAKEOFF MINIMUMS:
Rwy 2: Standard with minimum climb
of 220' per NM to 7300.
Rwy 20, 30: Standard.

SANTA FE
110.6 SAF :
Chan 43
N35°32.43'-W106°03.90'
L-8, H-4-6

NOTE: Chart not to scale.

DEPARTURE ROUTE DESCRIPTION

- TAKEOFF RUNWAY 2:** Climb heading 027° thence. . . .
- TAKEOFF RUNWAY 20:** Climbing left turn thence. . . .
- TAKEOFF RUNWAY 33:** Climbing right turn to heading 027° thence. . . .
- . . . Intercept and proceed on SAF R-354 to POAKE DME fix. Cross 8 DME ARC north of SAF VORTAC at or below 9000. Cross POAKE DME fix at or above 10000. Then on (transition) or (assigned route).
- SANTA FE TRANSITION (POAKE2.SAF):** From POAKE DME fix left turn direct SAF VORTAC. Cross 18 DME north of SAF VORTAC at/above 11000'.
- TAOS TRANSITION (POAKE2.TAS):** From POAKE DME fix via SAF R-354 and TAS R-174 to TAS VORTAC.

POAKE TWO DEPARTURE

SW-1, 10 SEP 2020 to 08 OCT 2020

SW-1, 10 SEP 2020 to 08 OCT 2020