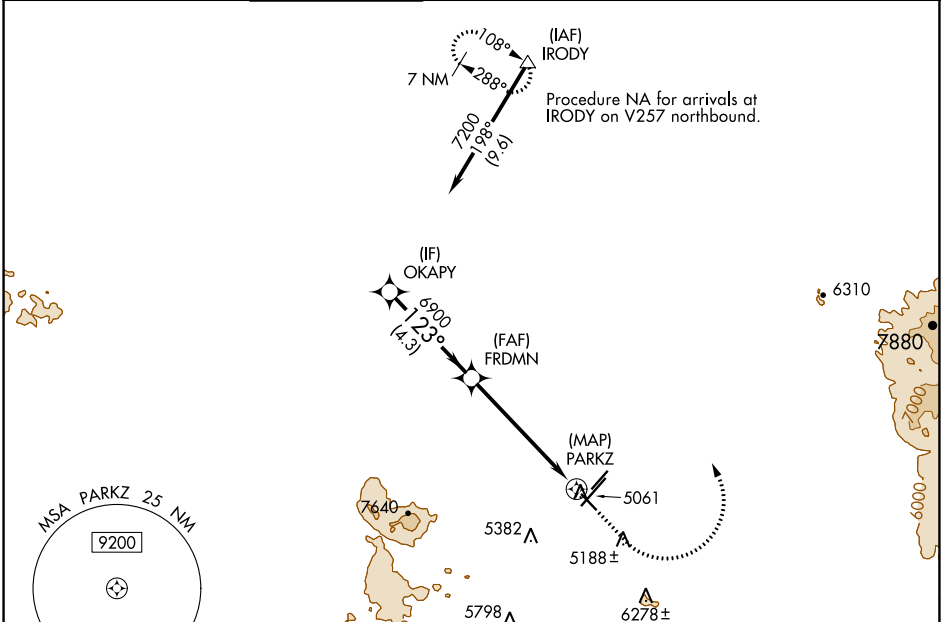


WAAS CH <b>49235</b> <b>W12A</b>	APP CRS <b>123°</b>	Rwy Idg TDZE Apt Elev	<b>4258</b> <b>5026</b> <b>5045</b>
--	------------------------	-----------------------------	---

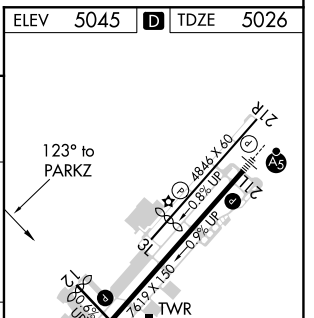
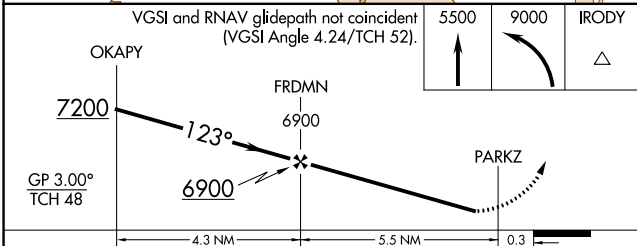
# RNAV (GPS) RWY 12

PRESCOTT RGNL - ERNEST A LOVE FIELD (P.R.C)

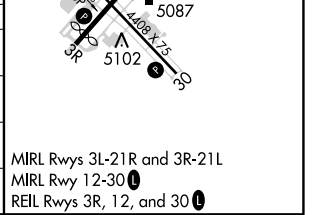
RNP APCH.				MISSED APPROACH: Climb to 5500 then climbing left turn to 9000 direct IRODY and hold, continue climb-in-hold to 9000.	
⚠ For uncompensated Baro-VNAV systems, LNAV/VNAV NA below -11°C or above 49°C. Rwy 12 helicopter visibility reduction below 1 SM NA. Straight-in Rwy 12 NA at night, Circling Rwy 12, 3L, 30 NA at night.					
ATIS <b>127.2</b>	PHOENIX APP CON <b>133.575 281.55</b>	PRESCOTT TOWER * <b>125.3 (CTAF) 257.9</b>	GND CON <b>121.7</b>	CLNC DEL <b>119.25</b>	<b>128.75</b> (12-30) <b>125.3 (CTAF)</b> (3R-21L) <b>122.95</b> UNICOM



ELEV	5045	TDZE	5026
------	------	------	------



CATEGORY	A	B	C	D
LPV DA	5276-1		250 (300-1)	
LNAV/VNAV DA	5432-1 3/8		406 (400-1 3/8)	
LNAV MDA	5520-1	494 (500-1)	5520-1 3/8	494 (500-1 3/8)
CIRCLING	5520-1 475 (500-1)	5760-1 715 (800-1)	6080-3 1035 (1100-3)	6680-3 1635 (1700-3)



SW-4, 10 SEP 2020 to 08 OCT 2020

SW-4, 10 SEP 2020 to 08 OCT 2020