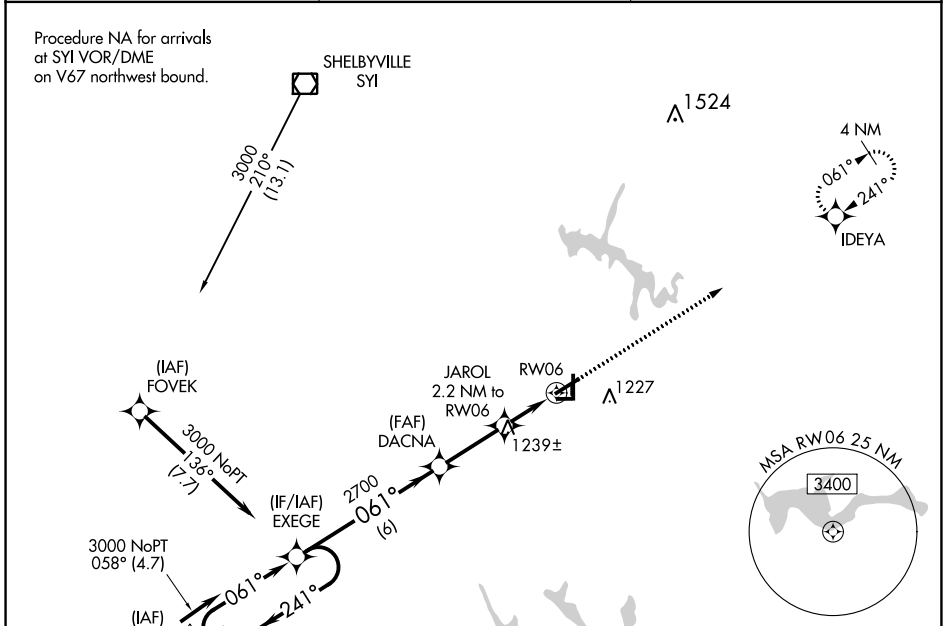


WAAS CH 99324 W06A	APP CRS 061°	Rwy Idg TDZE Apt Elev	5501 1084 1084
--	------------------------	-----------------------------	---

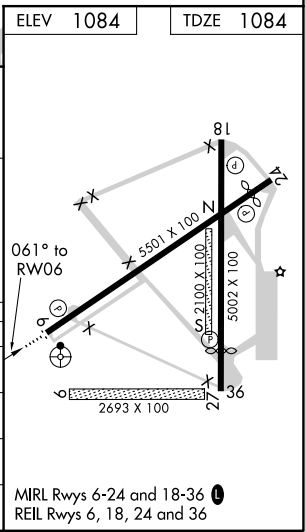
RNAV (GPS) RWY 6

TULLAHOMA RGNL AIRPORT/WM NORTHERN FIELD (THA)

RNP APCH.		ODALS	MISSED APPROACH: Climb to 3500 direct IDEYA and hold.
<p>▼ Circling NA to Rws 9 and 27. Inop table does not apply. For uncompensated Baro-VNAV systems, LNAV/VNAV NA below -17°C or above 54°C.</p>			
AWOS-3 128.325	MEMPHIS CENTER 128.15 323.125	UNICOM 123.0 (CTAF) 0	



4 NM Holding Pattern		EXEGE	DACNA	JAROL 2.2 NM to RWY 06	3500 IDEYA
6000 ← 241°		2700	*1820	*1.1 NM to RWY 06	*LNAV only.
3000 → 061°					
GP 3.00° TCH 41		6 NM	2.8 NM	1.1 NM	1.1 NM
CATEGORY	A	B	C	D	
LPV DA		1334-3/4	250 (300-3/4)		
LNAV/VNAV DA		1525-13/8	441 (500-13/8)		
LNAV MDA	1500-1	416 (500-1)	1500-11/8	416 (500-11/8)	
CIRCLING	1540-1 456 (500-1)	1560-1 476 (500-1)	1580-11/2 496 (500-11/2)	1640-2 556 (600-2)	



SE-1, 10 SEP 2020 to 08 OCT 2020

SE-1, 10 SEP 2020 to 08 OCT 2020

RNAV (GPS) RWY 6