

WAAS CH 53324 W24A	APP CRS 241°	Rwy Idg TDZE Apt Elev	5001 1082 1084
--	------------------------	-----------------------------	---

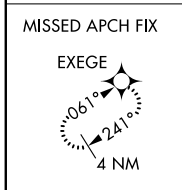
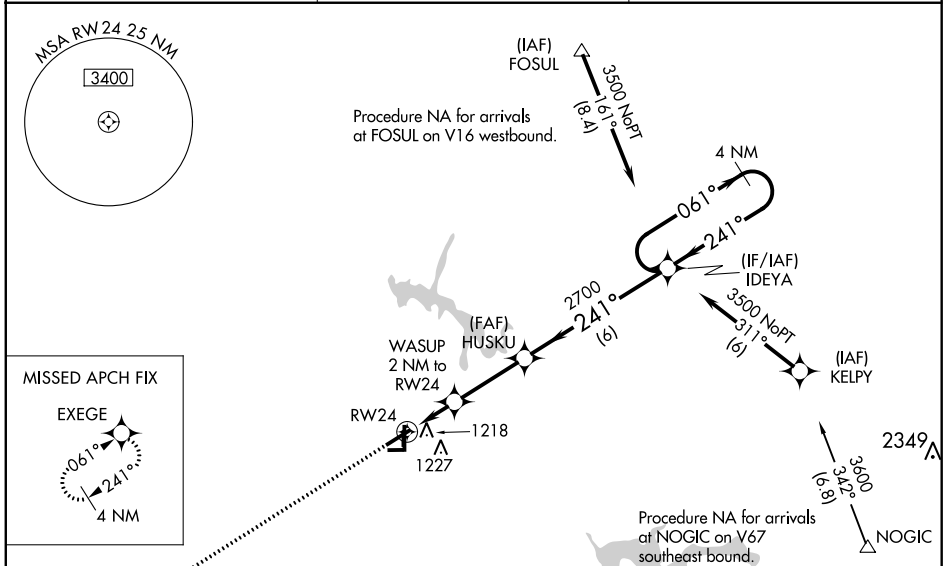
RNAV (GPS) RWY 24

TULLAHOMA RGNL AIRPORT/WM NORTHERN FIELD (THA)

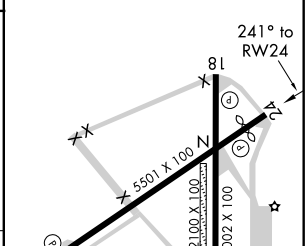
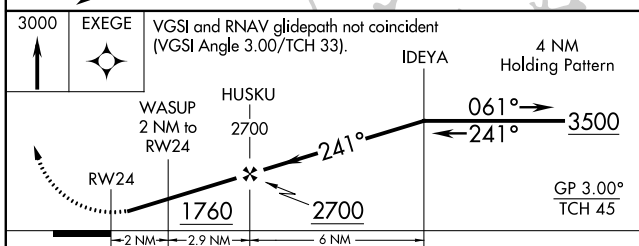
Baro-VNAV NA when using Nashville Intl altimeter setting. For uncompensated Baro-VNAV systems, LNAV/VNAV NA below -17°C (2°F) or above 37°C (98°F). DME/DME RNP-0.3 NA. Helicopter visibility reduction below 3/4 SM NA. When local altimeter setting not received, use Nashville Intl altimeter setting and increase all DA 182 feet and MDA 200 feet, increase LPV all Cats visibility 1/2 mile, increase LNAV/VNAV all Cats visibility 3/4 mile, increase LNAV Cat C and D visibility 3/4 mile, increase Circling Cat C visibility 1/2 mile and increase Circling Cat D visibility 1/2 mile. Circling NA to Rwy 9 and 27.

MISSED APPROACH:
Climb to 3000 direct EXEGE and hold.

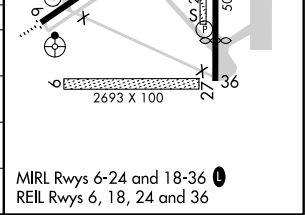
AWOS-3 128.325	MEMPHIS CENTER 128.15 323.125	UNICOM 123.0 (CTAF) 0
--------------------------	---	---------------------------------



ELEV 1084	TDZE 1082
-----------	-----------



CATEGORY	A	B	C	D
LPV DA		1332-1	250 (300-1)	
LNAV/VNAV DA		1400-1	318 (400-1)	
LNAV MDA		1480-1	398 (400-1)	
CIRCLING	1540-1 456 (500-1)	1560-1 476 (500-1)	1580-1½ 496 (500-1½)	1640-2 556 (600-2)



SE-1, 10 SEP 2020 to 08 OCT 2020

SE-1, 10 SEP 2020 to 08 OCT 2020