

|  |                        |                             |   |
|--|------------------------|-----------------------------|---|
| WAAS<br>CH <b>63023</b><br><b>W18A</b> | APP CRS<br><b>183°</b> | Rwy Idg<br>TDZE<br>Apt Elev | <b>5002</b><br><b>1082</b><br><b>1084</b> |
|--|------------------------|-----------------------------|---|

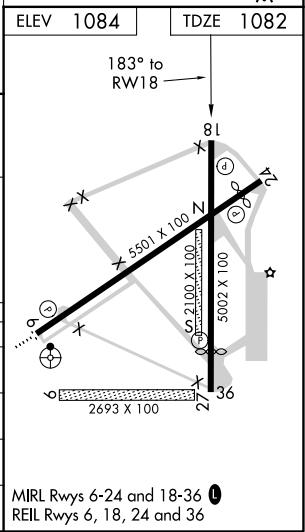
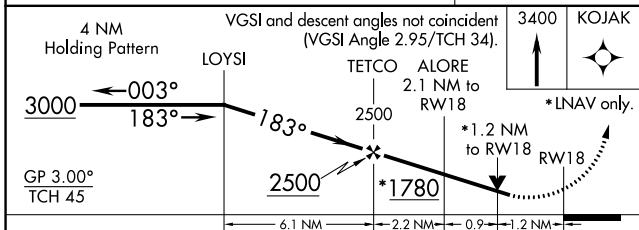
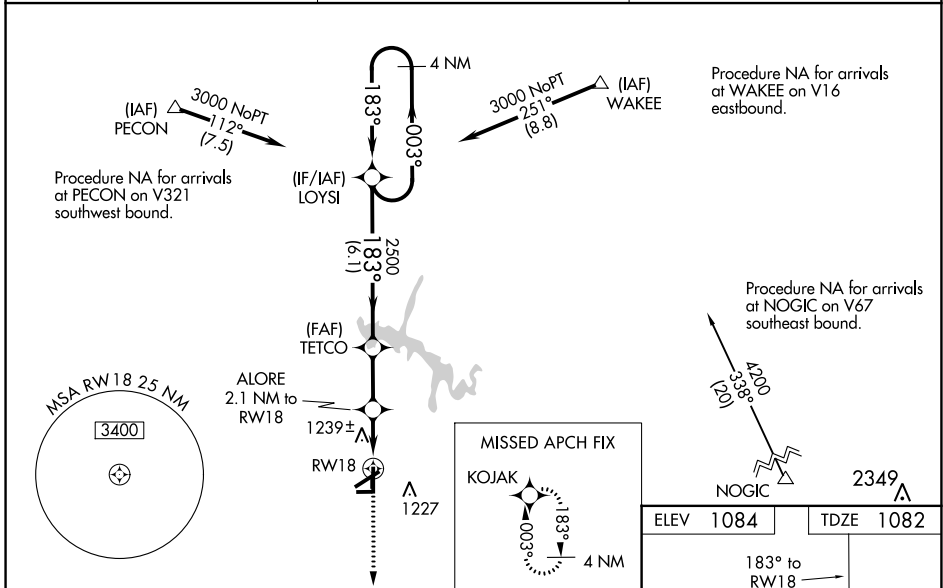
# RNAV (GPS) RWY 18

TULLAHOMA RGNL AIRPORT/WM NORTHERN FIELD (THA)

**NA** Baro-VNAV NA when using Nashville Intl altimeter setting. For uncompensated Baro-VNAV systems, LNAV/VNAV NA below -17°C (2°F) or above 37°C (98°F). DME/DME RNP-0.3 NA. Helicopter visibility reduction below 3/4 SM NA. When local altimeter setting not received, use Nashville Intl altimeter setting and increase all DA 182 feet and all MDA 200 feet, increase LPV all Cats visibility 5/8 mile, LNAV/VNAV all Cats visibility 7/8 mile and LNAV Cat C and D visibility 3/8 mile, increase Circling Cat C visibility 1/4 mile and increase Circling Cat D visibility 1/2 mile. VDP NA when using Nashville Intl altimeter setting. Circling NA to Rwys 9 and 27.

**MISSED APPROACH:**  
Climb to 3400 direct KOJAK and hold.

|                          |   |                               |
|--------------------------|---|-------------------------------|
| AWOS-3<br><b>128.325</b> | MEMPHIS CENTER<br><b>128.15 323.125</b> | UNICOM<br><b>123.0 (CTAF)</b> |
|--------------------------|---|-------------------------------|



| CATEGORY     | A                     | B                     | C                             | D                     |
|--------------|-----------------------|-----------------------|-------------------------------|-----------------------|
| LPV DA       |                       | 1436-1 1/4            | 354 (400-1 1/4)               |                       |
| LNAV/VNAV DA |                       | 1554-1 5/8            | 472 (500-1 3/8)               |                       |
| LNAV MDA     | 1500-1                | 418 (500-1)           | 1500-1 1/8                    | 418 (500-1 1/8)       |
| CIRCLING     | 1540-1<br>456 (500-1) | 1560-1<br>476 (500-1) | 1580-1 1/2<br>496 (500-1 1/2) | 1640-2<br>556 (600-2) |

SE-1, 10 SEP 2020 to 08 OCT 2020

SE-1, 10 SEP 2020 to 08 OCT 2020