

ALTUS, OKLAHOMA

# VOR or TACAN RWY 35L

ALTUS AFB (KLTS)

VORTAC LTS <b>109.8</b> Chan <b>35</b>	APCH CRS <b>360°</b>	Rwy Idg <b>13,440</b> TDZE <b>1354</b> Arpt Elev <b>1382</b>
--	-------------------------	--

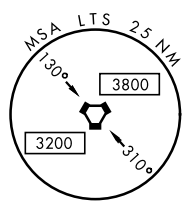
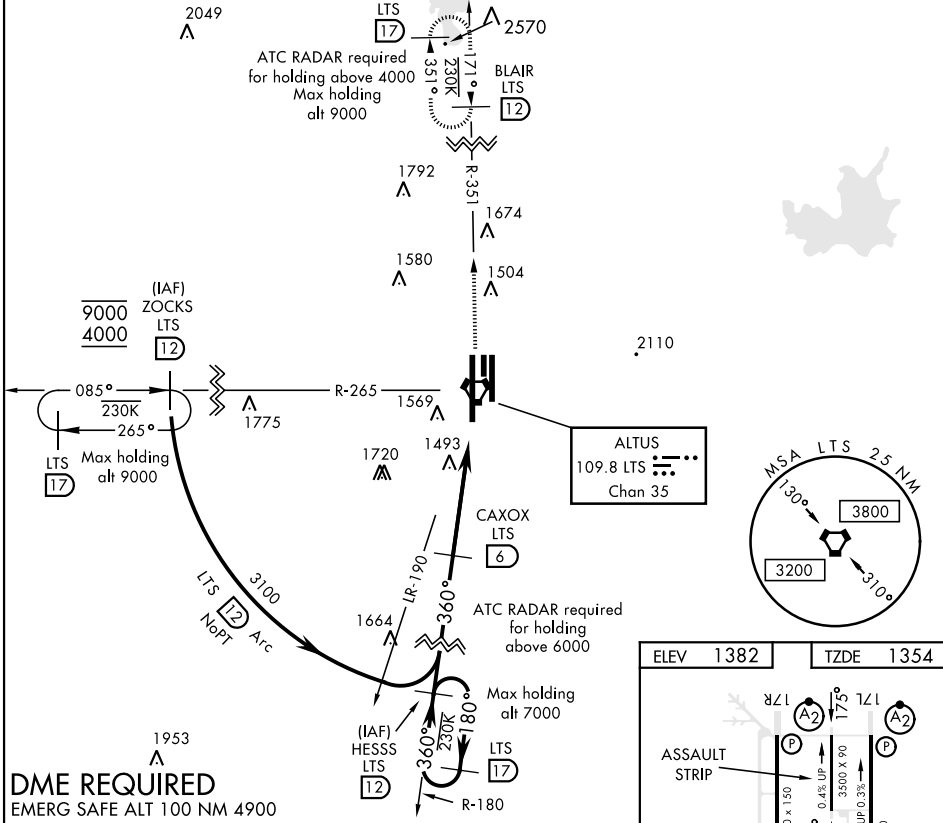
AL-482 [USAF]

▼ \* When ALS inop, increase CAT AB RVR to 55 and vis to 1 mile,  
CAT CDE RVR to 60 and vis to 1½ miles.  
\*\* Circling not authorized W of Rwy 17R-35L.

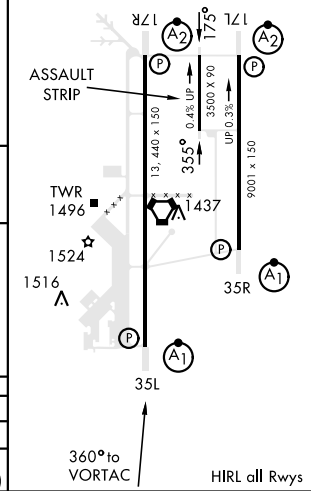


MISSED APPROACH: Climb to 4000 on LTS VORTAC R-351 to BLAIR and hold.

ATIS * <b>109.8 273.5</b>	FORT WORTH CENTER <b>133.5 350.35</b>	ALTUS APP CON <b>125.1 353.7</b>	ALTUS TOWER * <b>119.65 254.4</b>	GND CON <b>121.85 275.8</b>	CLNC DEL <b>120.65 284.7</b>
------------------------------	--	-------------------------------------	--------------------------------------	--------------------------------	---------------------------------



ELEV 1382	TZDE 1354
-----------	-----------



3100	180°	360°	360°	3000	VORTAC	COROX LTS 1.8
	3.04°	TCH 54				
		4.2 NM				

CATEGORY	A	B	C	D	E
S-35L*	1760/24	406 (400-½)	1760/40	406 (400-¾)	
CIRCLING**	1780-1 398 (400-1)	1840-1 458 (500-1)	1860-1½ 478 (500-1½)	1940-2 558 (600-2)	2100-2½ 718 (800-2½)

ALTUS, OKLAHOMA  
Amdt 2 12SEP19

34°40'N-99°16'W

ALTUS AFB (KLTS)

# VOR or TACAN RWY 35L

SC-1, 10 SEP 2020 to 08 OCT 2020

SC-1, 10 SEP 2020 to 08 OCT 2020