

ALTUS, OKLAHOMA

RNAV (GPS) Z RWY 35R

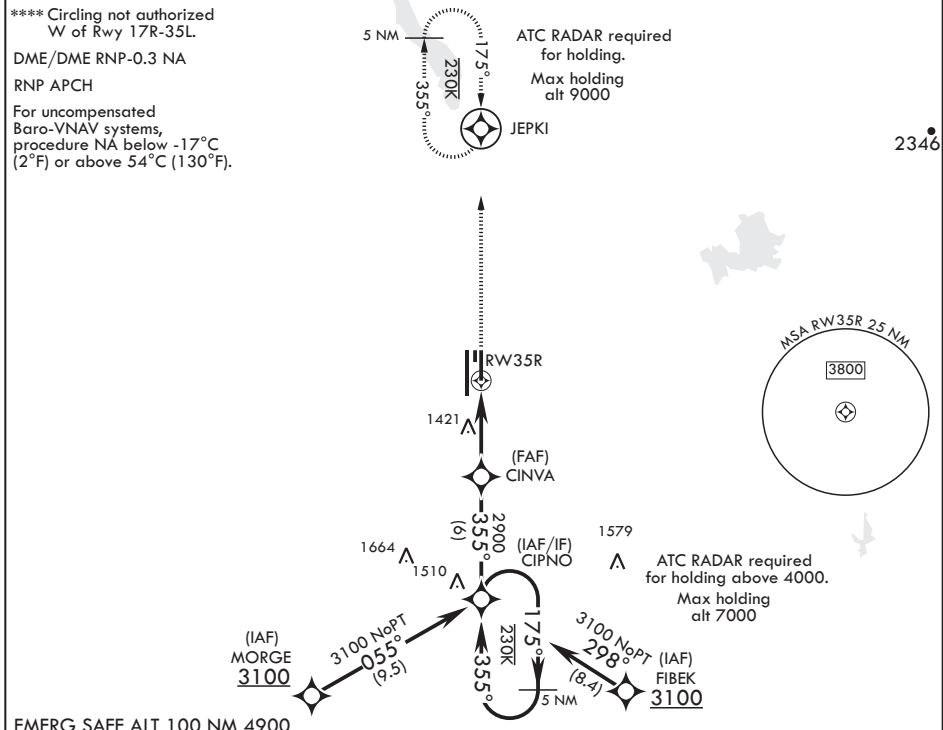
WAAS CH 41169 W 35B	APCH CRS 355°	Rwy ldg TDZE 1362 Arprt Elev 1382
---	-------------------------	---

AL-482 (USAF)

ALTUS AFB (KLTS)

<p>V * When ALS inop increase CAT ABCDE RVR to 40, vis to 3/4 mile; RVR 18 authorized with use of FD or AP or HUD to DA. ** When ALS inop increase CAT ABCDE RVR to 40, vis to 3/4 mile. *** When ALS inop increase CAT AB RVR to 55, vis to 1 mile; CAT CDE RVR 50, vis to 1 mile.</p>	<p>ALSF-1 </p>	<p>MISSED APPROACH: Climb to 4000 direct JEPKI and hold.</p>
--	----------------	--

ATIS ★ 109.8 273.5	FORT WORTH CENTER 133.5 350.35	APP CON 125.1 353.7	TOWER ★ 119.65 254.4	GND CON 121.85 275.8	CLNC DEL 120.65 284.7
------------------------------	--	-------------------------------	--------------------------------	--------------------------------	---------------------------------



EMERG SAFE ALT 100 NM 4900

<p>GP 3.00° TCH 53</p>	<p>← 175° →</p>		<p>← 355° →</p>		<p>4000</p> <p>JEPKI</p>	<p>ELEV 1382</p>	<p>TDZE 1362</p>
	<p>CIPNO</p>		<p>VGSI and RNAV glidepath not coincident.</p>				
<p>3100</p>		<p>355°</p>		<p>3100</p>		<p>ASSAULT STRIP</p>	
<p>GP 3.00° TCH 53</p>		<p>355°</p>		<p>2900</p>		<p>TWR 1496</p>	
<p>3100</p>		<p>355°</p>		<p>2900</p>		<p>BCN 1524</p>	
<p>3100</p>		<p>355°</p>		<p>2900</p>		<p>13,440 x 150</p>	
<p>3100</p>		<p>355°</p>		<p>2900</p>		<p>9001 x 150</p>	
<p>3100</p>		<p>355°</p>		<p>2900</p>		<p>35R</p>	
<p>3100</p>		<p>355°</p>		<p>2900</p>		<p>35L</p>	
<p>3100</p>		<p>355°</p>		<p>2900</p>		<p>355° to RWY35R</p>	
<p>3100</p>		<p>355°</p>		<p>2900</p>		<p>HIRL all Rwys</p>	

ALTUS, OKLAHOMA 34°40'N - 99°16'W ALTUS AFB (KLTS)

Amdt 1 20JUN19

RNAV (GPS) Z RWY 35R

SC-1, 10 SEP 2020 to 08 OCT 2020

SC-1, 10 SEP 2020 to 08 OCT 2020