

ALTUS, OKLAHOMA

RNAV (GPS) Z RWY 17L

WAAS CH 41166 W17A	APCH CRS 175°	Rwy ldg TDZE Arprt Elev	9001 1382 1382
---------------------------------	-------------------------	-------------------------------	---

AL-482 (USAF)

ALTUS AFB (KLTS)

⚠ * When ALS inop, increase CAT ABCDE RVR to 55 and vis to 1 mile.
 ** Circling not authorized W of Rwy 17R-35L.



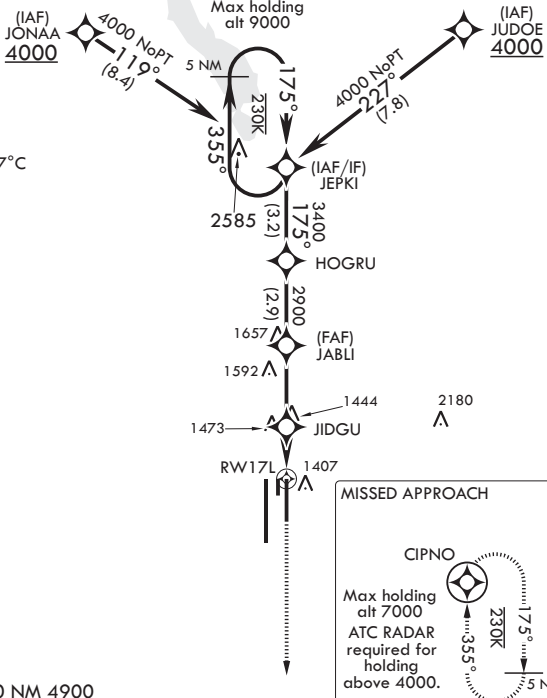
MISSED APPROACH: Climb to 4000 direct CIPNO and hold.

ATIS★ 109.8 273.5	FORT WORTH CENTER 133.5 350.35	APP CON 125.1 353.7	TOWER★ 119.65 254.4	GND CON 121.85 275.8	CLNC DEL 120.65 284.7
-----------------------------	--	-------------------------------	-------------------------------	--------------------------------	---------------------------------

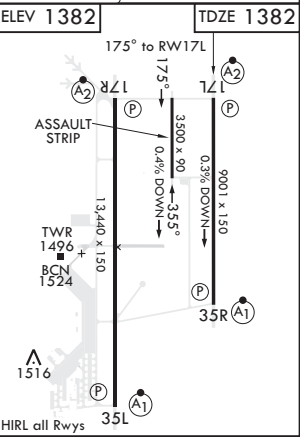
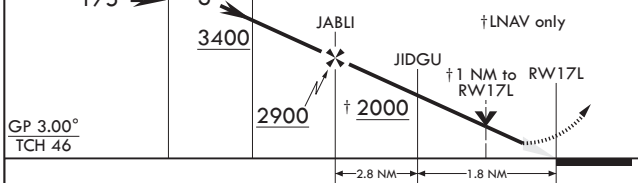
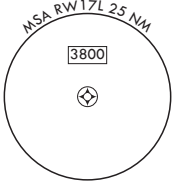
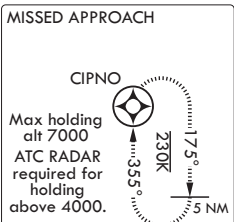
RNP APCH
DME/DME RNP-0.3 NA

ATC RADAR required for holding.

For uncompensated Baro-VNAV systems, procedure NA below -17°C or above 54°C (130°F).



EMERG SAFE ALT 100 NM 4900



CATEGORY	A	B	C	D	E
LPV DA	1582/40	200	(200-3/4)		
LNAV/VNAV DA	1632/40	250	(300-3/4)		
LNAV MDA*	1760/40	378	(400-3/4)		
C CIRCLING**	1780-1 398 (400-1)	1840-1 458 (500-1)	1860-1 1/2 478 (500-1 1/2)	1940-2 558 (600-2)	2100-2 1/2 718 (800-2 1/2)

ALTUS, OKLAHOMA
Amdt 1 10OCT19

34°40'N - 99°16'W

ALTUS AFB (KLTS)

RNAV (GPS) Z RWY 17L

SC-1, 10 SEP 2020 to 08 OCT 2020

SC-1, 10 SEP 2020 to 08 OCT 2020