

ROCKN TWO DEPARTURE (RNAV) (ROCKN2•ROCKN)

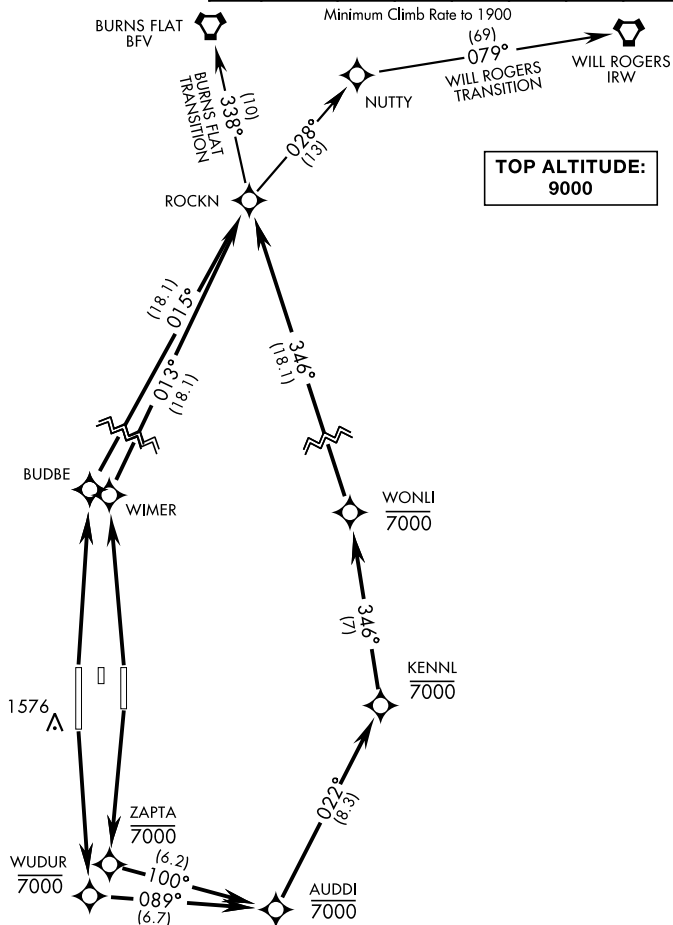
ALTUS AFB (KLTS)

ALTUS, OKLAHOMA

ATIS ★ 109.8 273.5
 CLNC DEL
 120.65 284.7
 GND CON
 121.85 275.8
 ALTUS TOWER ★
 119.65 254.4
 ALTUS DEP CON
 125.1 290.9
 FORT WORTH CENTER
 133.5 350.35
 ALTUS APP CON
 125.1 353.7

SHL-482 [USAF]

Rwy	Knots	60	120	180	240	300	360
17L	V/V(fpm)	300	600	900	1200	1500	1800
17R	V/V(fpm)	360	720	1080	1440	1800	2160



**TOP ALTITUDE:
9000**

**GPS REQUIRED
RNAV 1 REQUIRED**

DEPARTURE ROUTE DESCRIPTION

TAKE-OFF RWY 17L: Climb direct ZAPTA, then on depicted route to ROCKN. Cross WONLI at or below 7000, then via transition or assigned route. Maintain 9000. Expect filed alt 10 minutes after departure.

TAKE-OFF RWY 17R: Climb direct WUDUR, then on depicted route to ROCKN. Cross WONLI at or below 7000, then via transition or assigned route. Maintain 9000. Expect filed alt 10 minutes after departure.

TAKE-OFF RWY 35L: Climb direct BUDBE, then track 015° to ROCKN. Then via transition or assigned route. Maintain 9000. Expect filed alt 10 minutes after departure.

TAKE-OFF RWY 35R: Climb direct WIMER, then track 013° to ROCKN. Then via transition or assigned route. Maintain 9000. Expect filed alt 10 minutes after departure.

BURNS FLAT TRANSITION (ROCKN2•BFV): From over ROCKN track 338° to BFV.

WILL ROGERS TRANSITION (ROCKN2•IRW): From over ROCKN track 028° to NUTTY, then track 079° to IRW.

ROCKN TWO DEPARTURE (RNAV) (ROCKN2•ROCKN)

ALTUS, OKLAHOMA

ALTUS AFB (KLTS)

Orig 10OCT19

SC-1, 10 SEP 2020 to 08 OCT 2020

SC-1, 10 SEP 2020 to 08 OCT 2020