

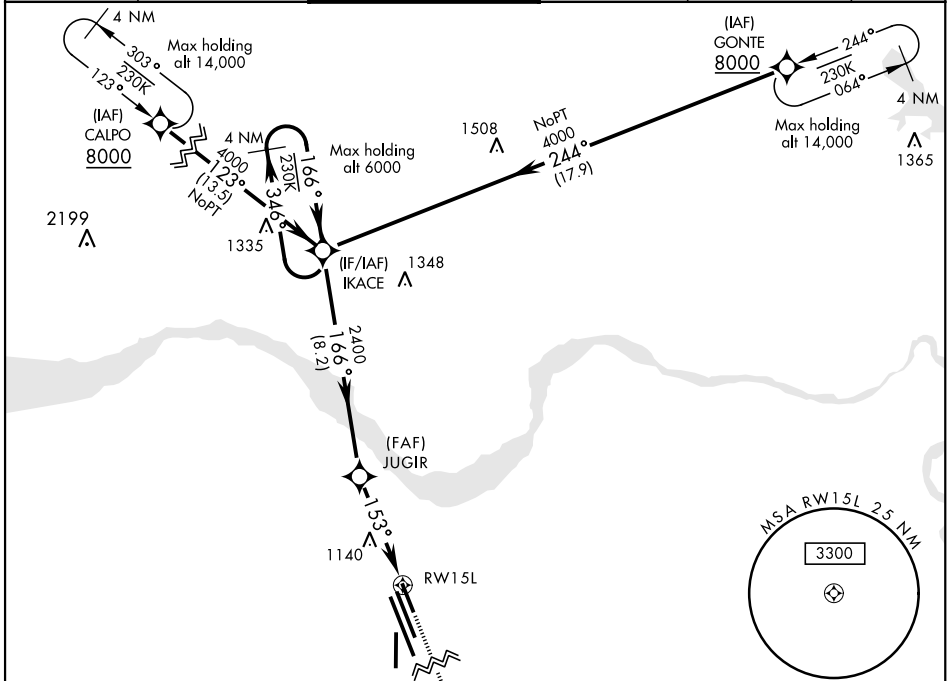
RNAV (GPS) RWY 15L

SHEPPARD AFB/WICHITA FALLS MUNI (KSPS)

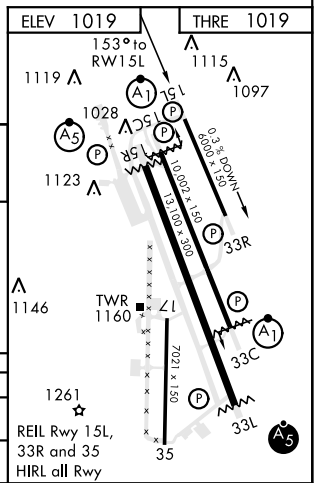
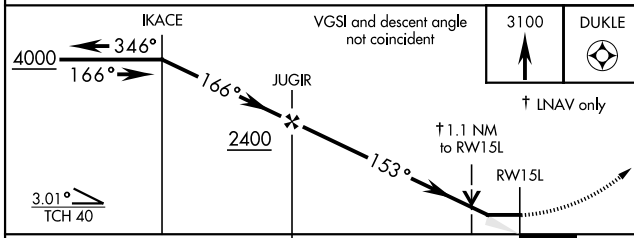
APCH CRS	Rwy ldg	6000
153°	THRE	1019
	Arpt Elev	1019

▼ * Circling NA West of RWY 15R/33L. MISSED APPROACH: Climb and maintain 3100, track 153° direct DUKLE and hold.

ATIS ★	SHEPPARD APP CON	SHEPPARD TOWER ★	GND CON	CLNC DEL	ASR
132.05 269.9	118.2 269.025	119.75 279.525 (CTAF)	125.5 289.4	121.2 282.225	



EMERG SAFE ALT FROM "RW15L" 100 NM 4600



CATEGORY	A	B	C	D	E
LNAV MDA	NA	1420-1 401 (500-1)	1420-1½ 401 (500-1½)		NA
CIRCLING*	NA	1480-1 461 (500-1)	1480-1½ 461 (500-1½)	2020-3 1001 (1100-3)	NA

WICHITA FALLS, TEXAS 33°59'N-98°30'W SHEPPARD AFB/WICHITA FALLS MUNI (KSPS)

Amdt 2 09JAN14

RNAV (GPS) RWY 15L

SC-2, 10 SEP 2020 to 08 OCT 2020

SC-2, 10 SEP 2020 to 08 OCT 2020